

3829. TIF

HOLE AVENUE @ MOBLEY AVENUE

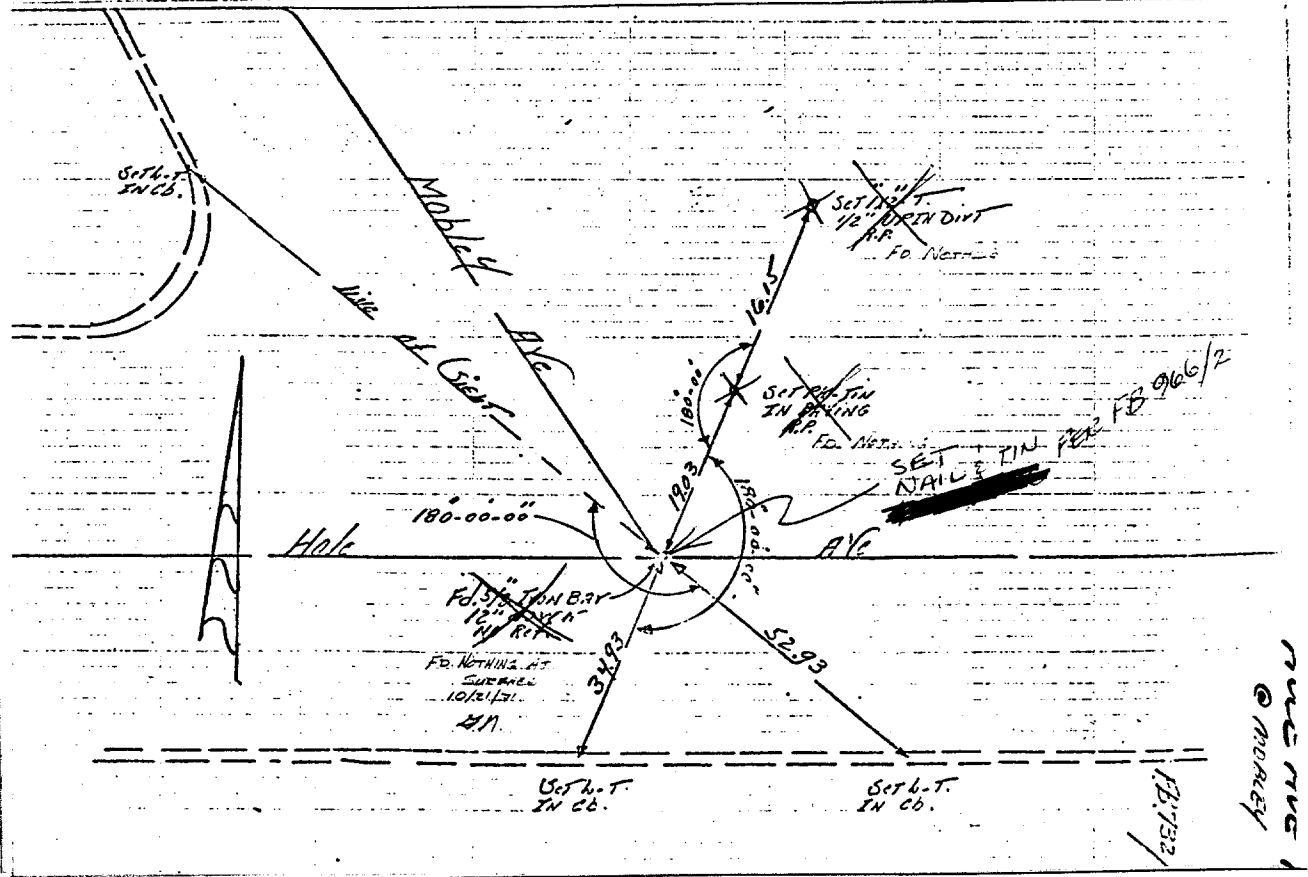
F.B. 732/56

Historical Data
Co. F.B. 650/2

Field Crew
Worley
Thorp
FYC
F.B. 732/56
4-26-1968

TRANSIT TIES

CR 10/21/7 E.D.



- ✕ FD. Ramset Nail on T/C
- FD. "C" Nail on T/C

- FD. LD. & TK. on T/C
- Set LD. & TK. on T/C

Street: HOLE AVE

X-Street: MOBLEY AVE

OFFICIAL USE ONLY

Scale:

Date:

Drawn by:

W.O.:

F.B.: **732/56**

OFFICIAL TIE PLAT

CITY OF RIVERSIDE

These ties are for the purpose of perpetuating the found monumentation. No claim is made as to the relationship of the points or lines shown hereon to true boundary locations.

Sheet 1 of 1

File No.:

MOBLEY AVE
© MORLEY