

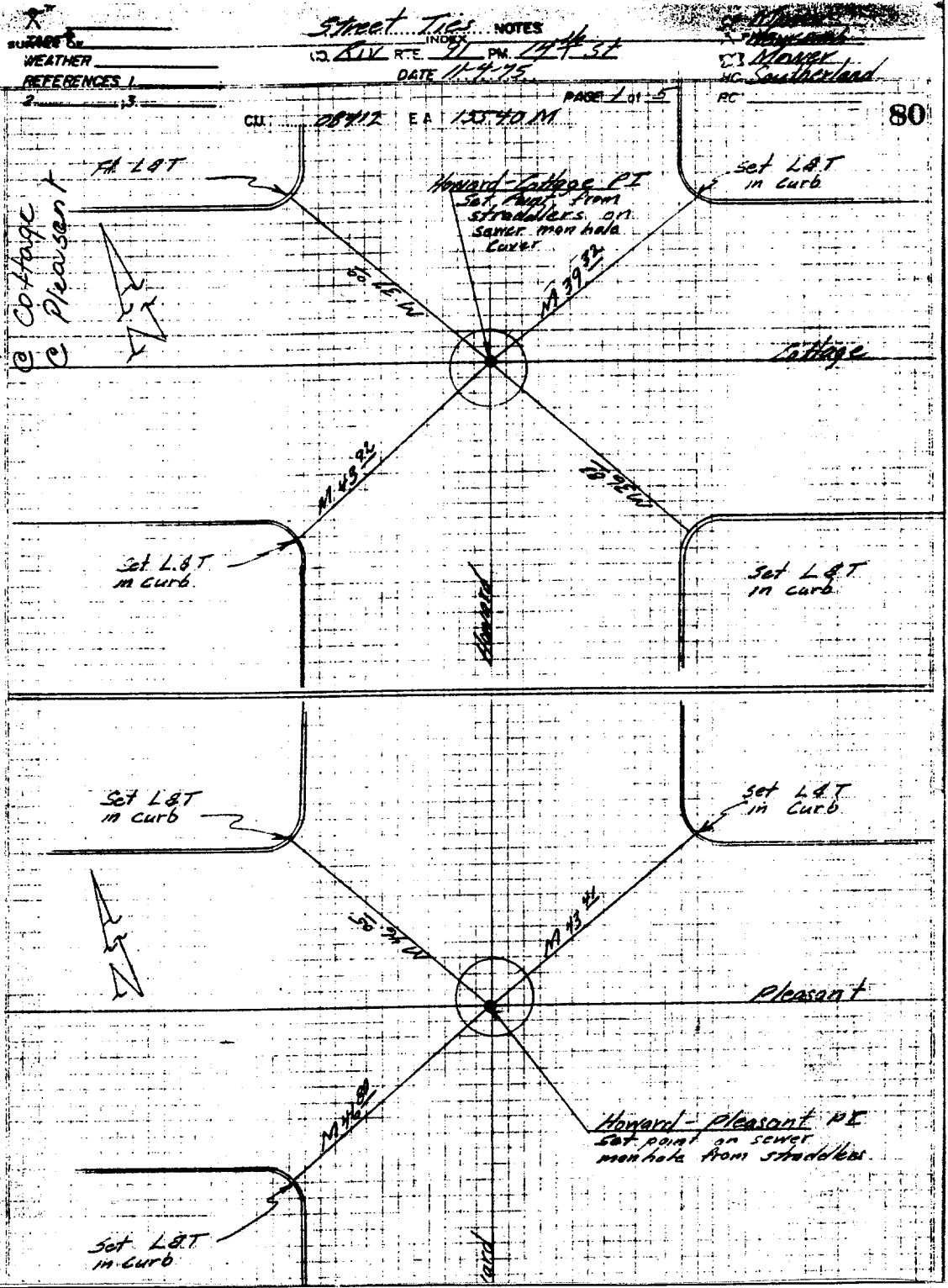
Street: Howard

OFFICIAL USE ONLY

X-Street: Cottage & Pleasant

6D

6D



- ✕ FD. Ramset Nail on T/C
- FD. LD. & TK. on T/C
- FD. "C" Nail on T/C
- Set LD. & TK. on T/C

Scale:  
 Date:  
 Drawn by:  
 W.O.:  
 F.B.:

**OFFICIAL TIE PLAT**  
 CITY OF RIVERSIDE

*These ties are for the purpose of perpetuating the found monumentation. No claim is made as to the relationship of the points or lines shown hereon to true boundary locations.*

Sheet 1 of 1  
 File No.:

Street Ties NOTES  
 INDEX  
 13 DIV R.T.E. 11 PM. 11-9-75  
 DATE 11-9-75  
 PAGE 1 of 5  
 SURVEYOR: S. Mower  
 W.C. Southerland  
 WEATHER  
 REFERENCES 1, 2, 3  
 CU: 08412 EA 13540.01  
 RC 80

HOWARD  
 COTTAGE  
 PLEASANT  
 DIST  
 DATE  
 SURVEY BY