

38571F

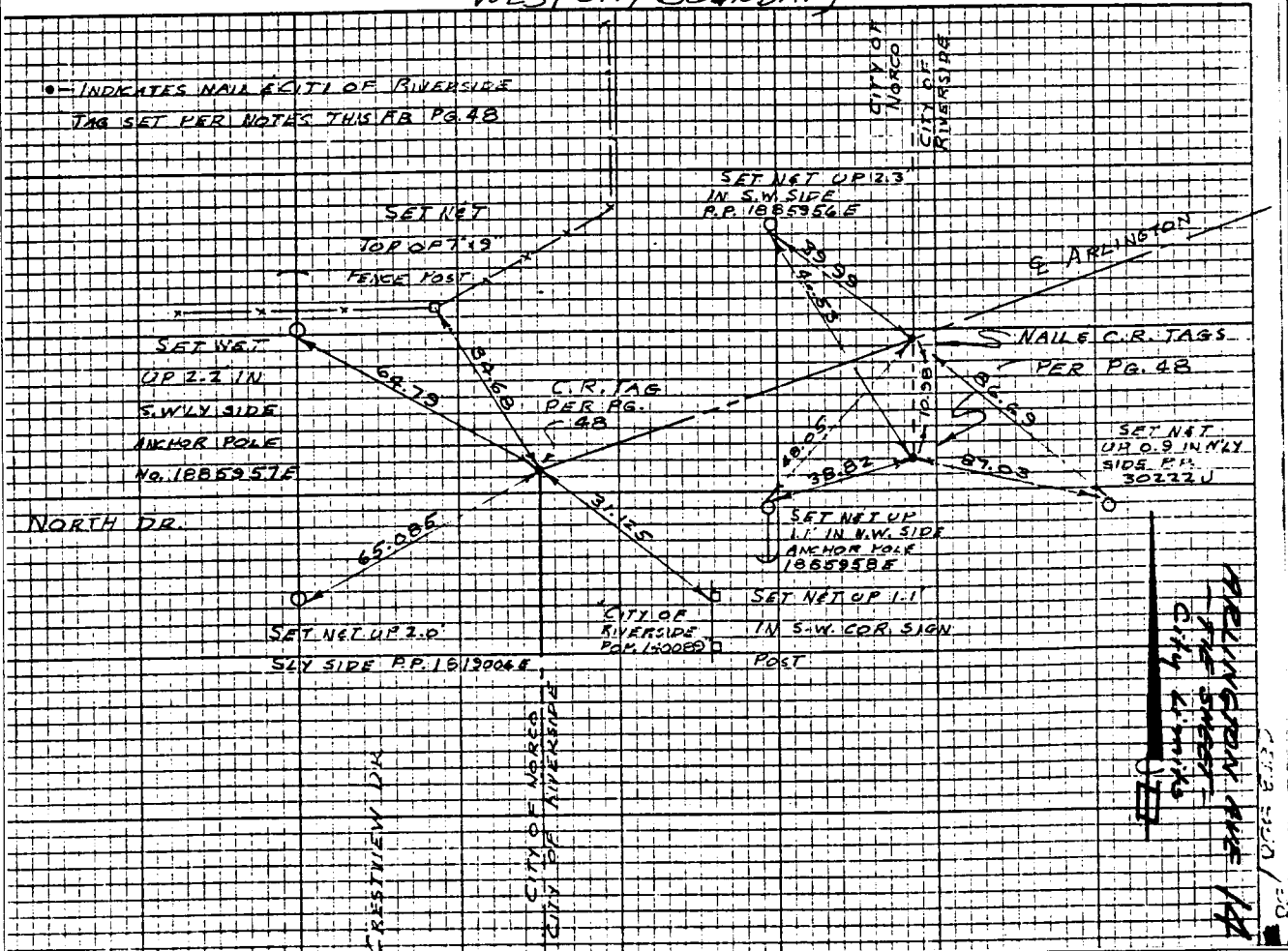
NEW
MARCH 6, 1972

SWING TIES!!

HISTORICAL DATA

THIS FB PG 45

ATLINGTON AVE. AT F.B. 950/50.
WEST CITY BOUNDARY



- ✕ FD. Ramset Nail on T/C
- FD. LD. & TK. on T/C
- FD. "C" Nail on T/C
- Set LD. & TK. on T/C

Scale:
Date:
Drawn by:
W.O.:
F.B.:

OFFICIAL TIE PLAT

CITY OF RIVERSIDE

These ties are for the purpose of perpetuating the found monumentation. No claim is made as to the relationship of the points or lines shown hereon to true boundary locations.

Sheet 1 of 1
File No.:

Street: Arlington Ave
X-Street: City Limits
#14

OFFICIAL USE ONLY