

Street: Howard
X-Street: S'ly of Date

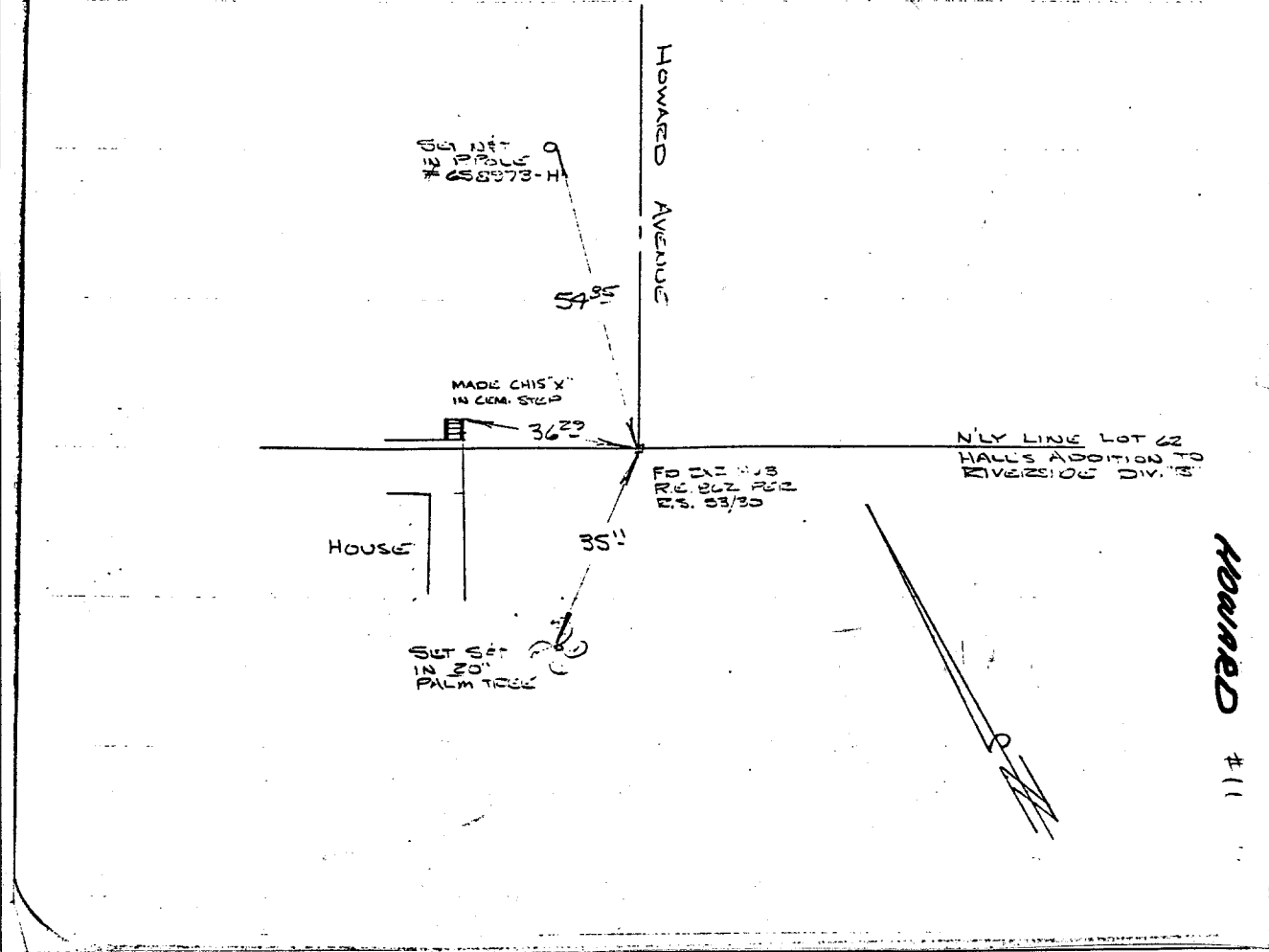
OFFICIAL USE ONLY

HOWARD AVENUE
S'ly OF DATE ST

HISTORICAL DATA
R.S. 53/30

SWING TIES

CREW:
STEELE
MORGAN
JORDAN
2-13-69
F.B. 862/41



Howard #11

- ✕ FD. Ramset Nail on T/C
- FD. LD. & TK. on T/C
- FD. "C" Nail on T/C
- Set LD. & TK. on T/C

Scale: _____
 Date: _____
 Drawn by: _____
 W.O.: _____
 F.B.: _____

OFFICIAL TIE PLAT
CITY OF RIVERSIDE

These ties are for the purpose of perpetuating the found monumentation. No claim is made as to the relationship of the points or lines shown hereon to true boundary locations.

Sheet 1 of 1
 File No.: _____