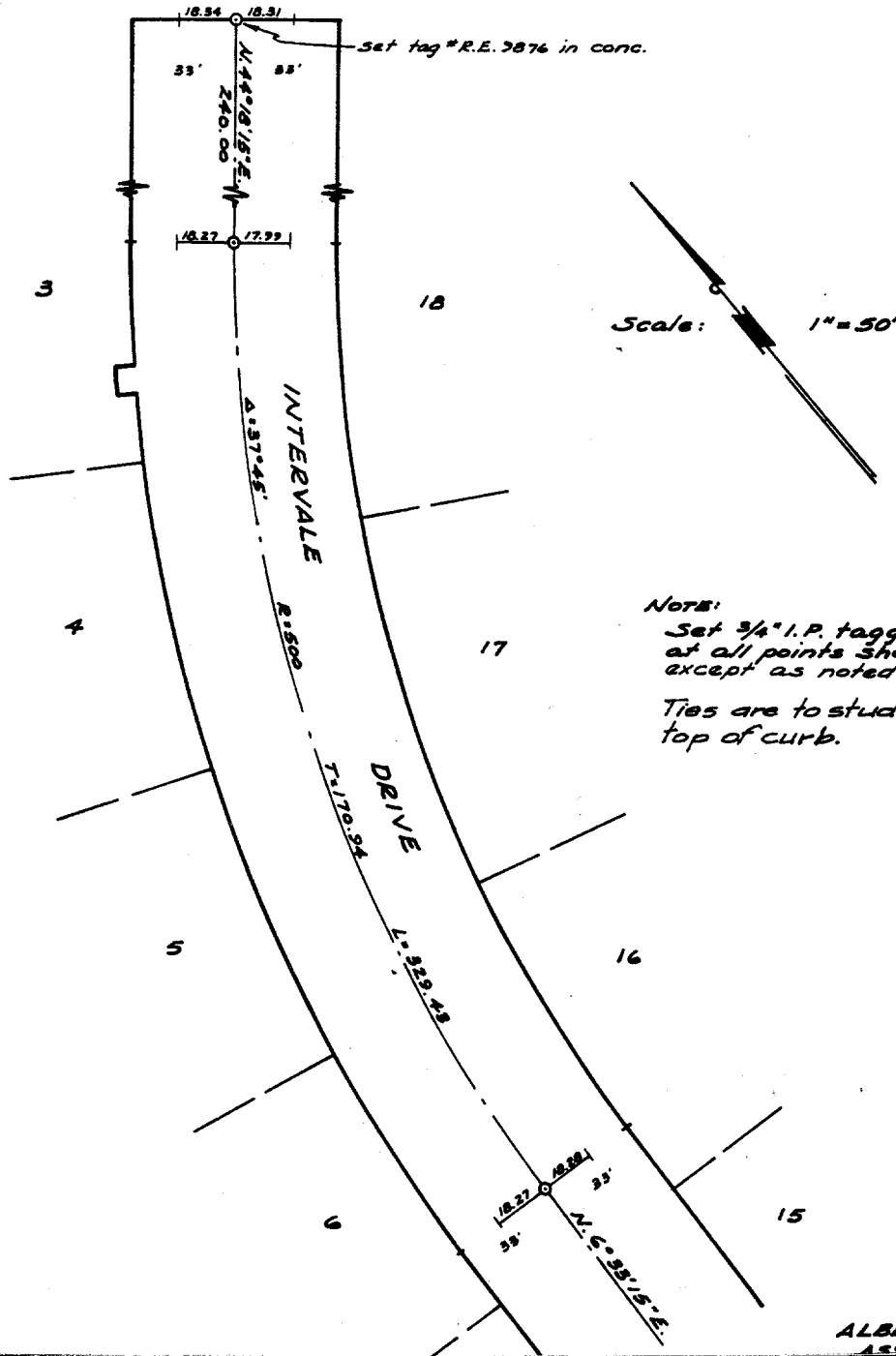


3876.T1F

TRACT 2766

Being a subdivision of a portion of the S.W. 1/4 of Sec. 31, T.2S., R.4W.; a portion of the N.W. 1/4 of Sec. 6, T.3S., R.4W.; a portion of the N.E. 1/4 of Sec. 1, T.3S., R.5W., and a portion of the S.E. 1/4 of Sec. 36, T.2S., R.5W., S.B.B. & M.



Note:
 Set 3/4" I.P. tagged R.E. 2876 at all points shown thus: O, except as noted.
 Ties are to studs set in top of curb.

Street: **INTERVALE DR.**
 X-Street:
 OFFICIAL USE ONLY

ALBERT A. WEBB ASSOCIATES

- ✕ FD. Ramset Nail on T/C
- FD. LD. & TK. on T/C
- FD. "C" Nail on T/C
- Set LD. & TK. on T/C

Scale:
 Date:
 Drawn by:
 W.O.: 63-256
 F.B.: 549

OFFICIAL TIE PLAT
CITY OF RIVERSIDE

These ties are for the purpose of perpetuating the found monumentation. No claim is made as to the relationship of the points or lines shown hereon to true boundary locations.

TR 2766
 Sheet 2 of 2
 File No.: