

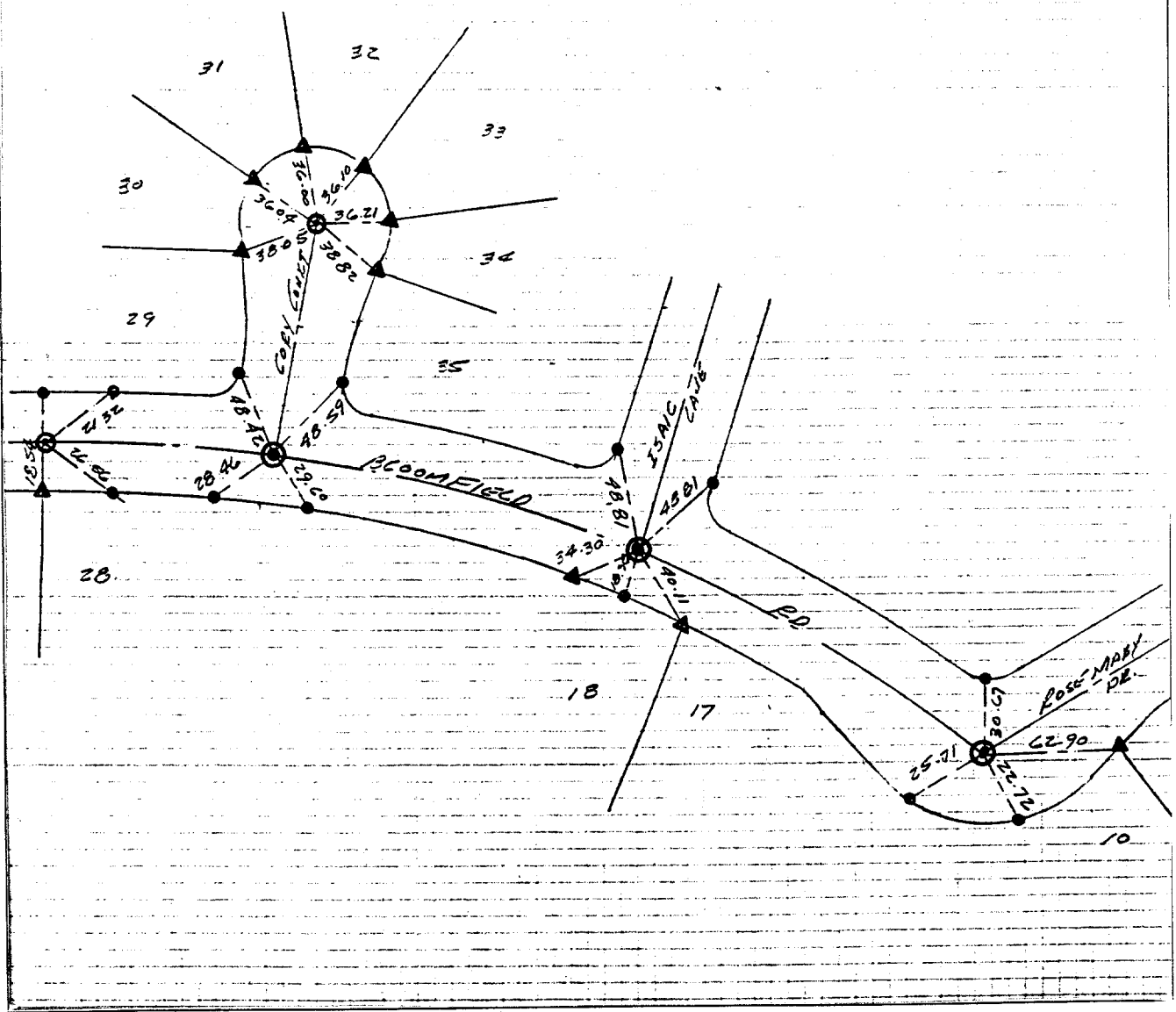
3895.TIF

Street: ISAIC LN.

OFFICIAL USE ONLY

X-Street: BLOOMFIELD RD.

SET NAIL TAG LS 3018 ON PROLONGATION OF SIDE LINES = ▲  
SET RAMSET NAIL ON TOP EXIST CURB = ●  
1" I.P., L.S. 3018, FLUSH = ○



- ✗ FD. Ramset Nail on T/C
- FD. LD. & TK. on T/C
- FD. "C" Nail on T/C
- Set LD. & TK. on T/C

Scale:  
Date:  
Drawn by:  
W.O.:  
F.B.: 11410/70

### OFFICIAL TIE PLAT

#### CITY OF RIVERSIDE

*These ties are for the purpose of perpetuating the found monumentation. No claim is made as to the relationship of the points or lines shown hereon to true boundary locations.*

TR 22275-2

Sheet 5 of 5  
File No.: