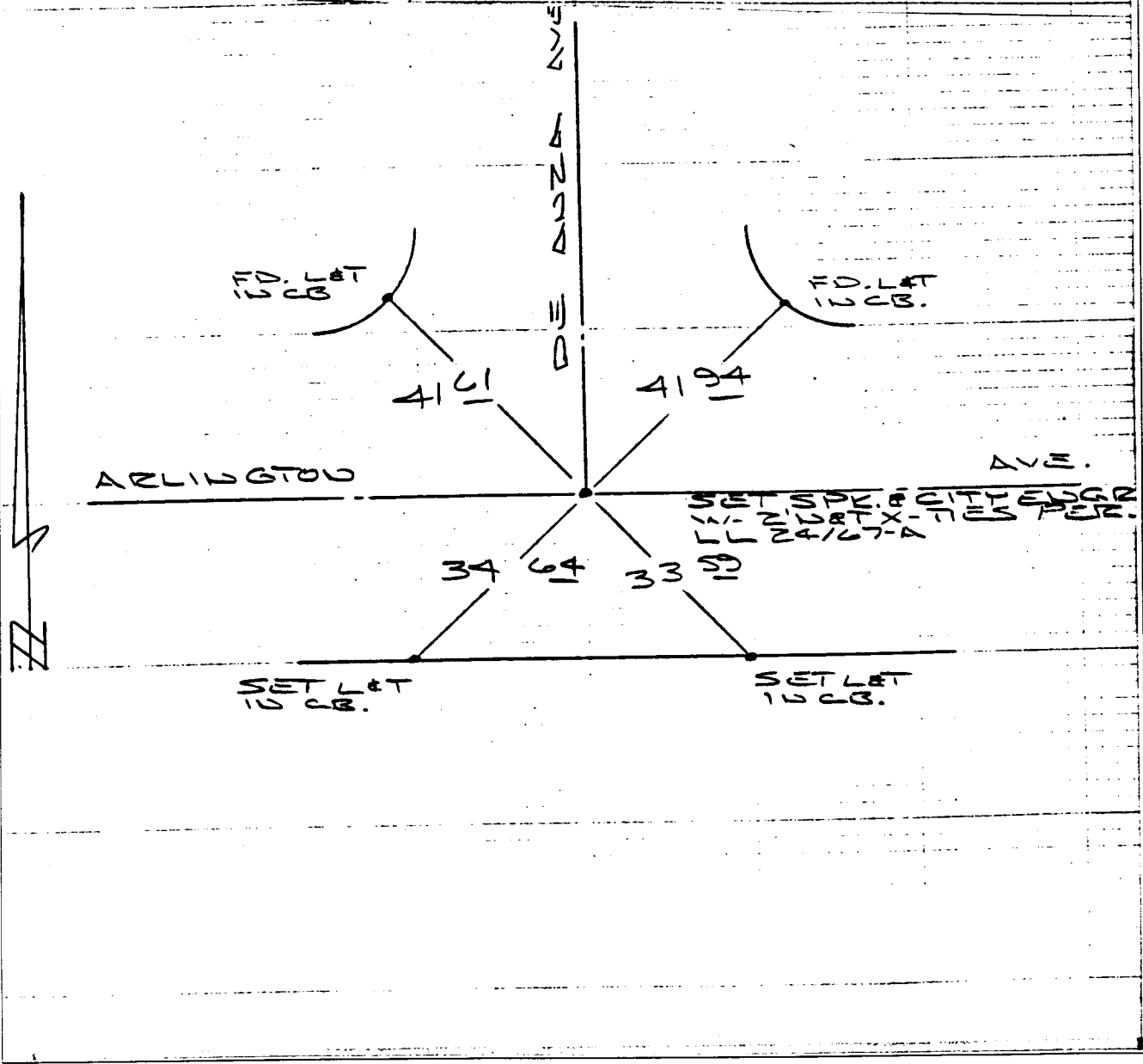


390.71F

OF ARLINGTON AVE. INDEX LL38 PAGE 01
ED BY GARCIA-STEPHENS-LOPEZ DATE MAR. 10, 1989

HISTORICAL DATA
LLZA/GTA
CRFB 03/89

TRANSIT TIES



- ✕ FD. Ramset Nail on T/C
- FD. LD. & TK. on T/C
- FD. "C" Nail on T/C
- Set LD. & TK. on T/C

Street: Arlington Ave X-Street: De Hutz # 18
OFFICIAL USE ONLY

Scale:

Date:

Drawn by:

W.O.:

F.B.:

OFFICIAL TIE PLAT

CITY OF RIVERSIDE

These ties are for the purpose of perpetuating the found monumentation. No claim is made as to the relationship of the points or lines shown hereon to true boundary locations.

Sheet 1 of 1

File No.: