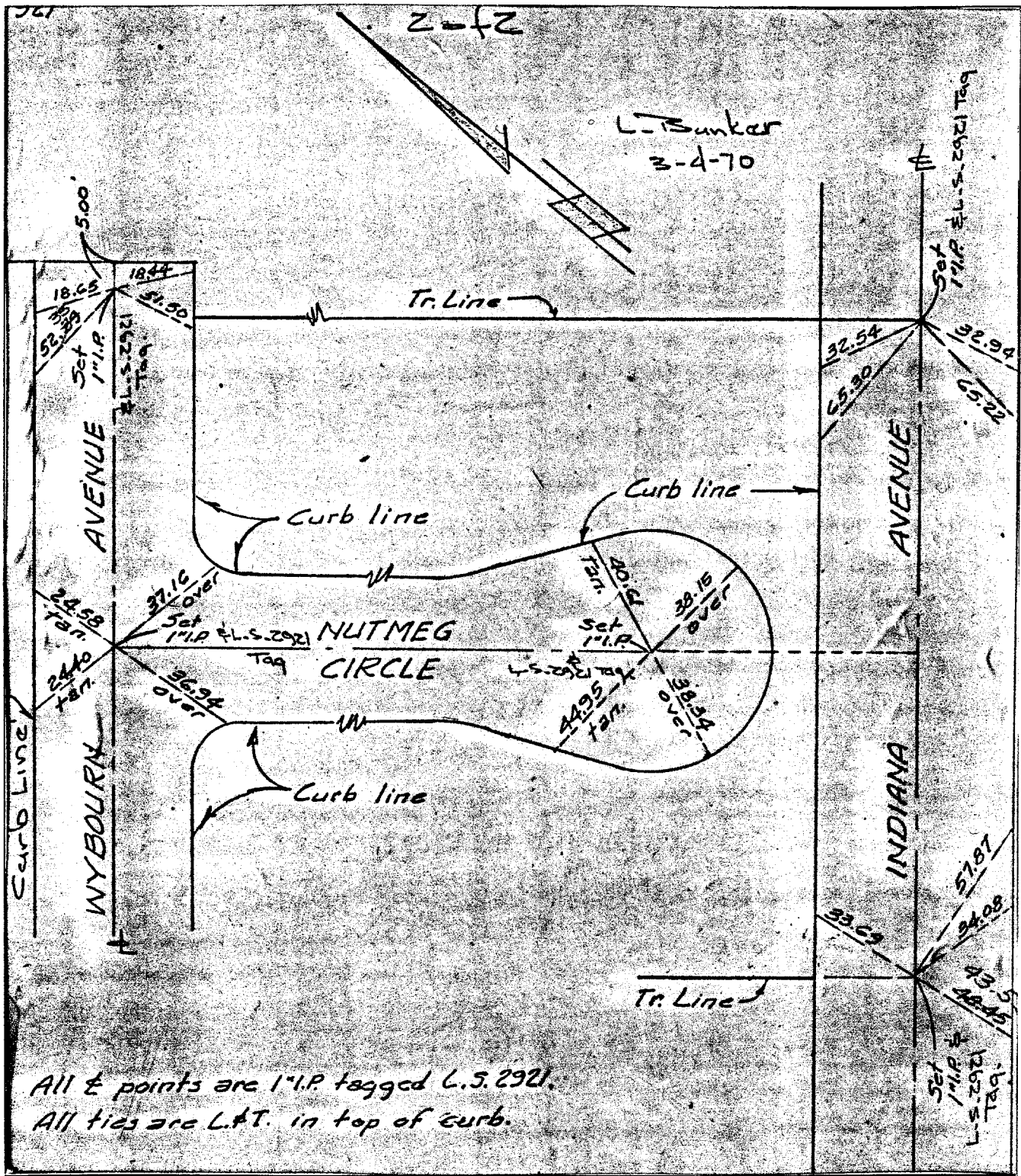


3929.71F

Street: **INDIANA AVE**
 X-Street: **CHURCHILL & FILLMORE**
 OFFICIAL USE ONLY BETWEEN



All \times points are 1" I.P. tagged L.S. 2921.
 All ties are L.A.T. in top of curb.

- \times FD. Ramset Nail on T/C
- \bullet FD. LD. & TK. on T/C
- \blacksquare FD. "C" Nail on T/C
- \circ Set LD. & TK. on T/C

Scale:
 Date:
 Drawn by:
 W.O.:
 F.B.:

OFFICIAL TIE PLAT
CITY OF RIVERSIDE

These ties are for the purpose of perpetuating the found monumentation. No claim is made as to the relationship of the points or lines shown hereon to true boundary locations.

TRACT 3669

Sheet 1 of 1

File No.:

17