

393.71F

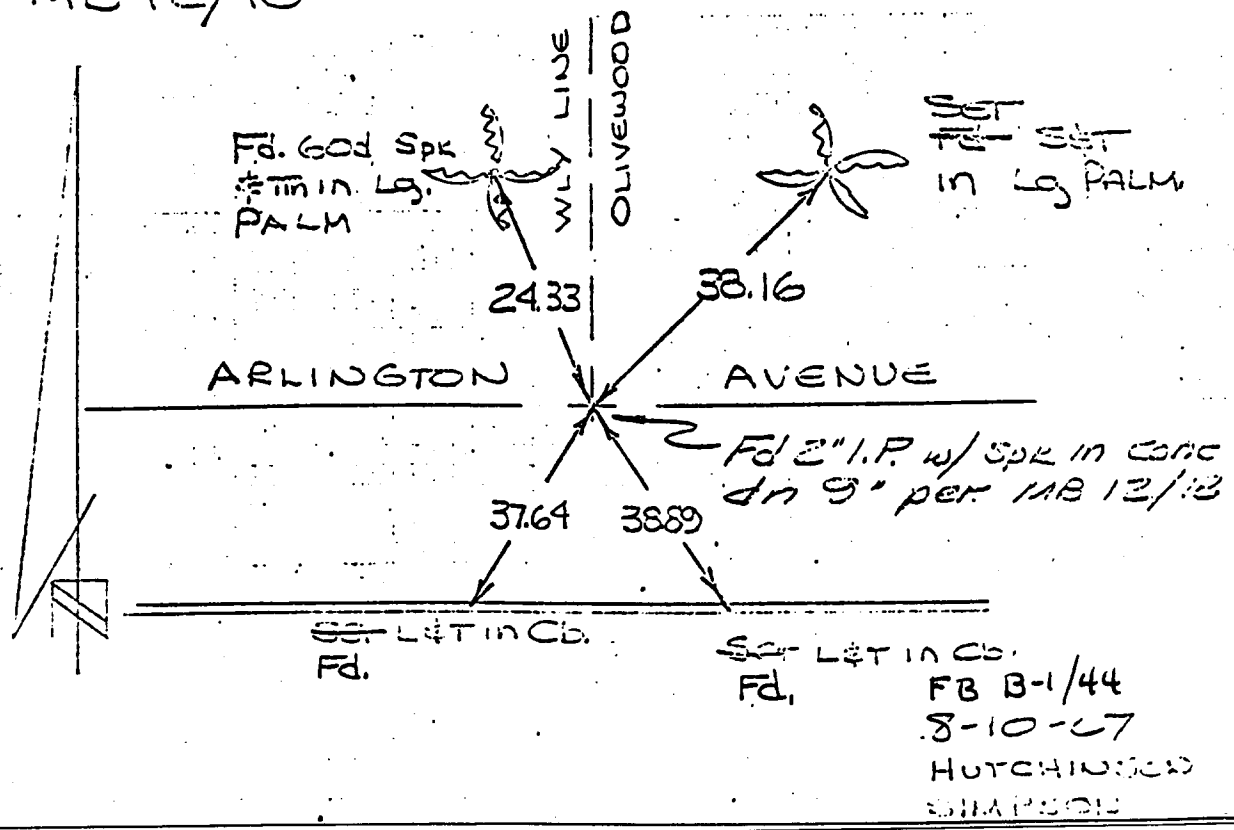
Street: ARLINGTON AVE
X-Street: Wily Line of Olivewood
OFFICIAL USE ONLY

ARLINGTON AVENUE
AT
Wily LINE OLIVEWOOD
AVENUE (LOT A,
MB 12/18)

(btw. DURANGO & MAUDE)

SWING TIES

REFERENCE:
RIVERSIDE INDUSTRIAL
DEVELOPMENT PROJECT
MB 12/18



- ✕ FD. Ramset Nail on T/C
- FD. LD. & TK. on T/C
- FD. "C" Nail on T/C
- Set LD. & TK. on T/C

Scale:
Date:
Drawn by:
W.O.:
F.B.:

OFFICIAL TIE PLAT
CITY OF RIVERSIDE

These ties are for the purpose of perpetuating the found monumentation. No claim is made as to the relationship of the points or lines shown hereon to true boundary locations.

Sheet 1 of 1
File No.:

220