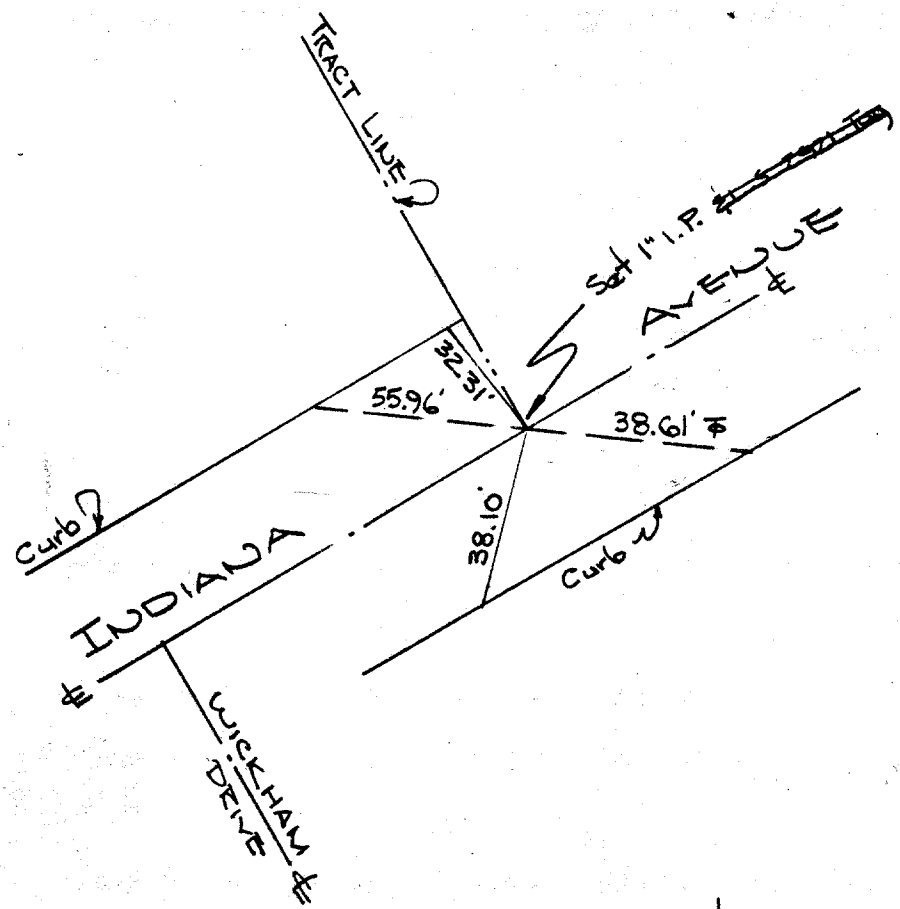
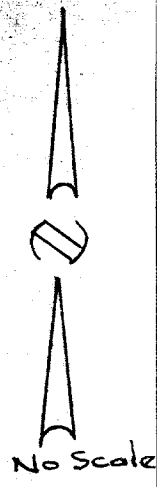


3986 TIF

Street: INDIANA AVE

X-Street: WICKHAM DR
OFFICIAL USE ONLY

L. David
12-13-71



Note:
All ties are lead & tack set
in top of curb.

ALSO SEE 3

- ✕ FD. Ramset Nail on T/C
- FD. LD. & TK. on T/C
- FD. "C" Nail on T/C
- Set LD. & TK. on T/C

Scale:
Date:
Drawn by:
W.O.:
F.B.:

OFFICIAL TIE PLAT

CITY OF RIVERSIDE

These ties are for the purpose of perpetuating the found monumentation. No claim is made as to the relationship of the points or lines shown hereon to true boundary locations.

Sheet 1 of 1
File No.:

65