

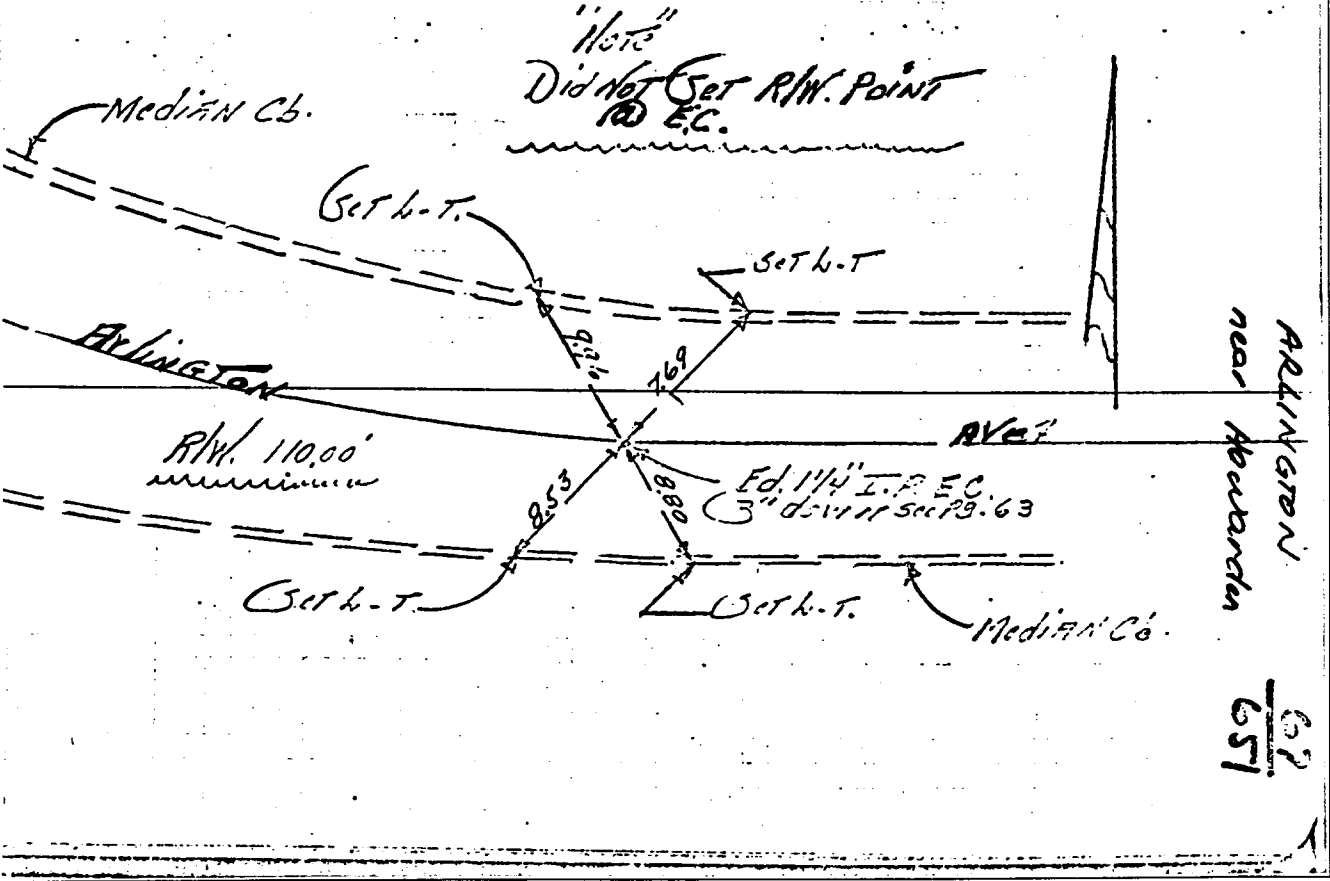
400.717

Street: ARLINGTON AVE

X-Street: (near) Haywarden # 28  
OFFICIAL USE ONLY EC - ELYO HAYWARDEN

HISTORICAL DATA F.B. I/77 F.B. 651/63		Field crew HENRY THOMP	
		F.R.C. F.B. 651/67 1-29-63	

"Note" TRANSIT TIES



- × FD. Ramset Nail on T/C
- FD. LD. & TK. on T/C
- FD. "C" Nail on T/C
- Set LD. & TK. on T/C

## OFFICIAL TIE PLAT

### CITY OF RIVERSIDE

These ties are for the purpose of perpetuating the found monumentation. No claim is made as to the relationship of the points or lines shown hereon to true boundary locations.

Scale: \_\_\_\_\_  
 Date: \_\_\_\_\_  
 Drawn by: \_\_\_\_\_  
 W.O.: \_\_\_\_\_  
 F.B.: \_\_\_\_\_

Sheet 1 of 1  
 File No.: \_\_\_\_\_