

R. L. BROWN & ASSOCIATES, INC.  
 1442 Irvine Blvd. Suite 125  
 TUSTIN, CALIFORNIA 92680  
 (714) 669-0972

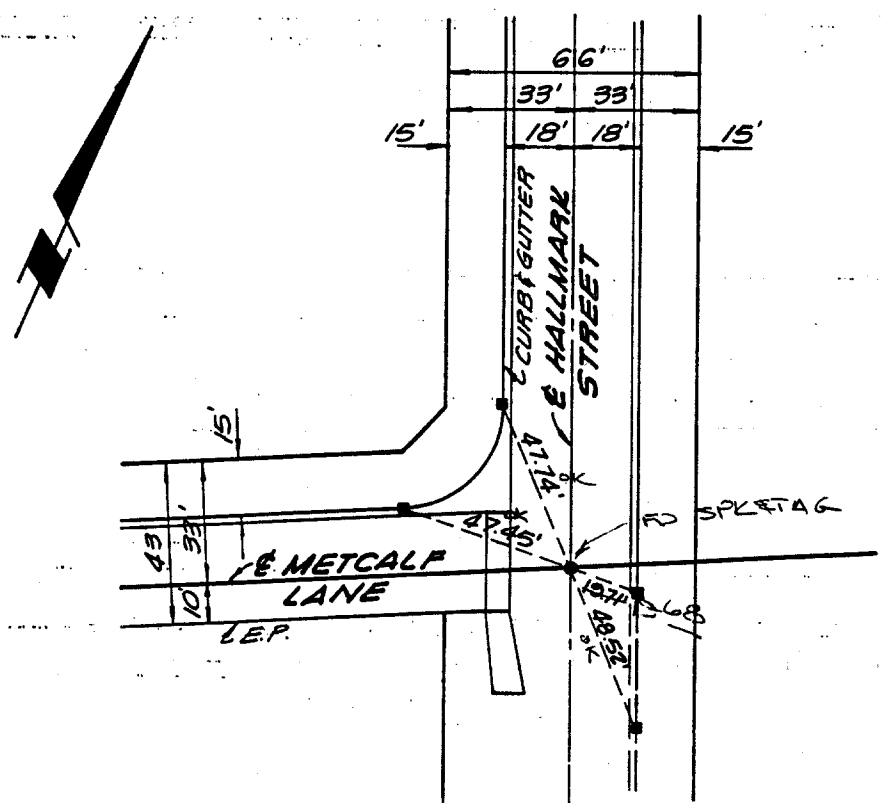
JOB TRACT NO. 10604  
 SHEET NO. 4 OF 4  
 CALCULATED BY \_\_\_\_\_ DATE 11/2/87  
 CHECKED BY \_\_\_\_\_ DATE \_\_\_\_\_  
 SCALE 1" = 40'

Street: HALLMARK ST

OFFICIAL USE ONLY

X-Street: METCALF LN.

CENTERLINE TIE NOTES



LEGEND

- LEAD & TACK AS SHOWN
- 1" I.P. TAGGED R.C.E. 16683

*Richard L. Brown*  
 RICHARD L. BROWN

- ✗ FD. Ramset Nail on T/C
- FD. LD. & TK. on T/C
- FD. "C" Nail on T/C
- Set LD. & TK. on T/C

Scale:  
 Date:  
 Drawn by:  
 W.O.:  
 F.B.:

**OFFICIAL TIE PLAT**  
 CITY OF RIVERSIDE

*These ties are for the purpose of perpetuating the found monumentation. No claim is made as to the relationship of the points or lines shown hereon to true boundary locations.*

TRACT 10604

Sheet 1 of 1

File No.: