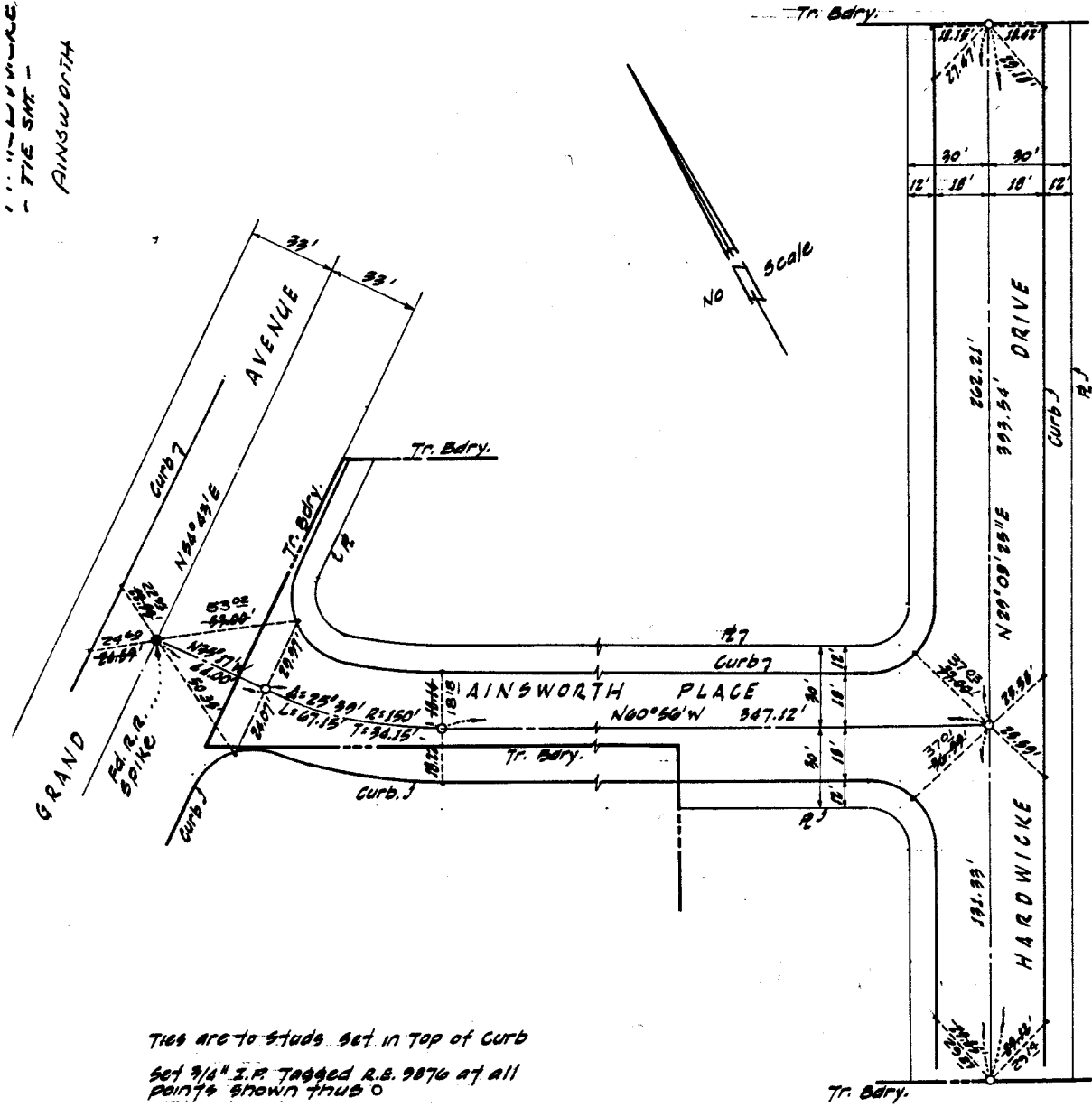


TRACT NO. 3561
Being a Subdivision of Lots and Portions of
Lots 2 and 3 of the Map of Calkins Addition
Filed in BK. 11 of Maps, Pg. 13 thereof,
Riverside County Records.

1" = 40' VERTICAL SCALE
1" = 40' HORIZONTAL SCALE
AINSWORTH



Ties are to studs set in top of curb
Set 3/8" I.P. Tagged R.B. 2876 at all
points shown thus ○
Found Mon. as Noted shown thus ●

CORRECTED
3-9-68
LWS

ALBERT A. WEBB ASSOCIATES
F.B. 567/52
W.O. 66-85

- ✕ FD. Ramset Nail on T/C
- FD. LD. & TK. on T/C
- FD. "C" Nail on T/C
- Set LD. & TK. on T/C

Street: **HARDWICKE DR.**
X-Street: **AINSWORTH PL.**

OFFICIAL USE ONLY

Scale:
Date:
Drawn by:
W.O.: 66-85
F.B.: 567/52

OFFICIAL TIE PLAT CITY OF RIVERSIDE

These ties are for the purpose of perpetuating the found
monumentation. No claim is made as to the relationship of
the points or lines shown hereon to true boundary locations.

TRACT NO. 3561

Sheet 1 of 1

File No.: