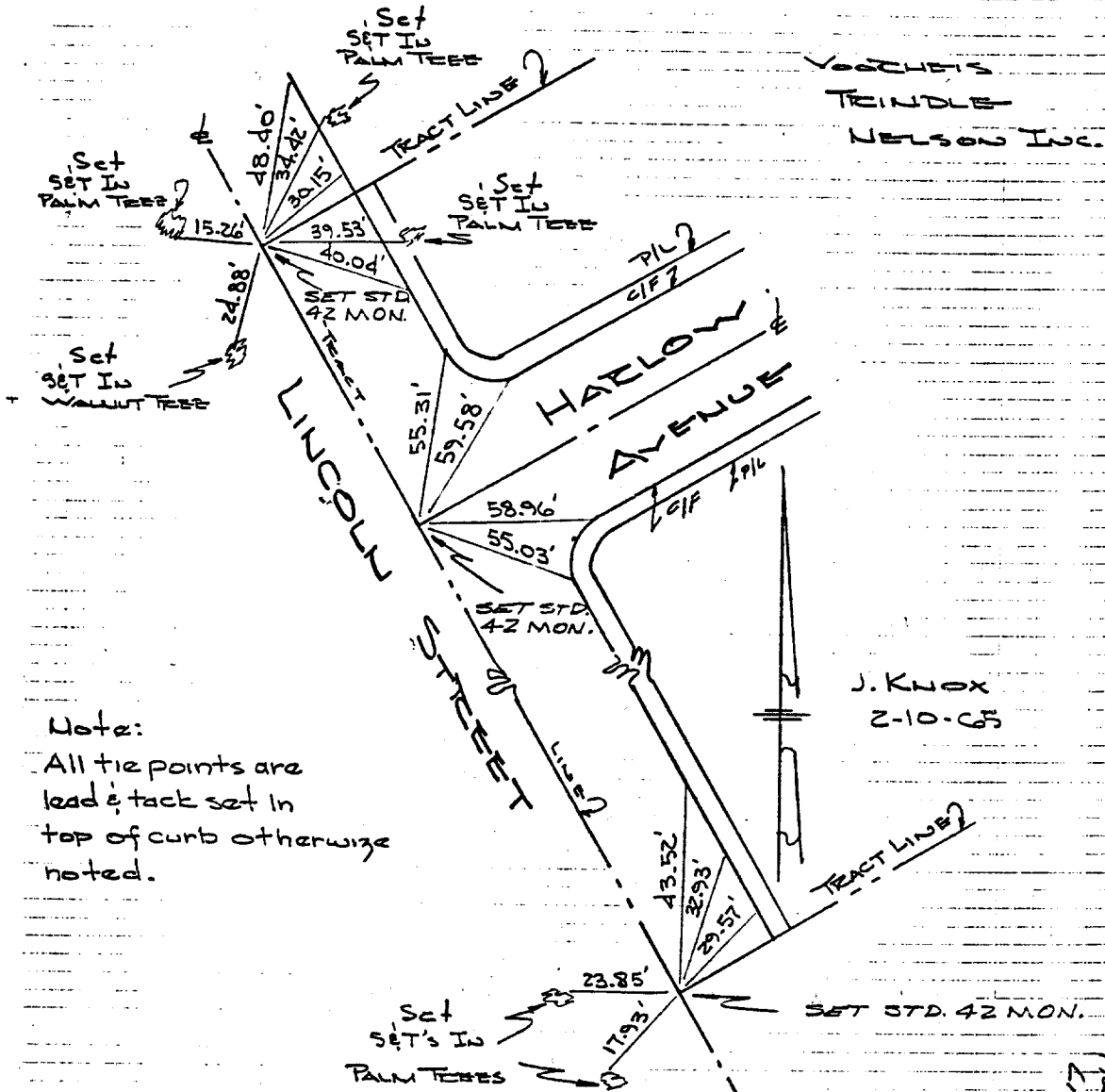


ETIES TRACT 3022
RIVERSIDE COUNTY

0038



Note:
All tie points are lead & tack set in top of curb otherwise noted.

TIES NOTED IN TIE BOOK
DATE: 4-5-76
BY: EJA

Harlow
Lincoln

Street: HARLOW AVE

OFFICIAL USE ONLY

X-Street: LINCOLN ST

- ✕ FD. Ramset Nail on T/C
- FD. "C" Nail on T/C

- FD. LD. & TK. on T/C
- Set LD. & TK. on T/C

Scale:
Date:
Drawn by:
W.O.:
F.B.:

OFFICIAL TIE PLAT
CITY OF RIVERSIDE

These ties are for the purpose of perpetuating the found monumentation. No claim is made as to the relationship of the points or lines shown hereon to true boundary locations.

Sheet 1 of 8

File No.: