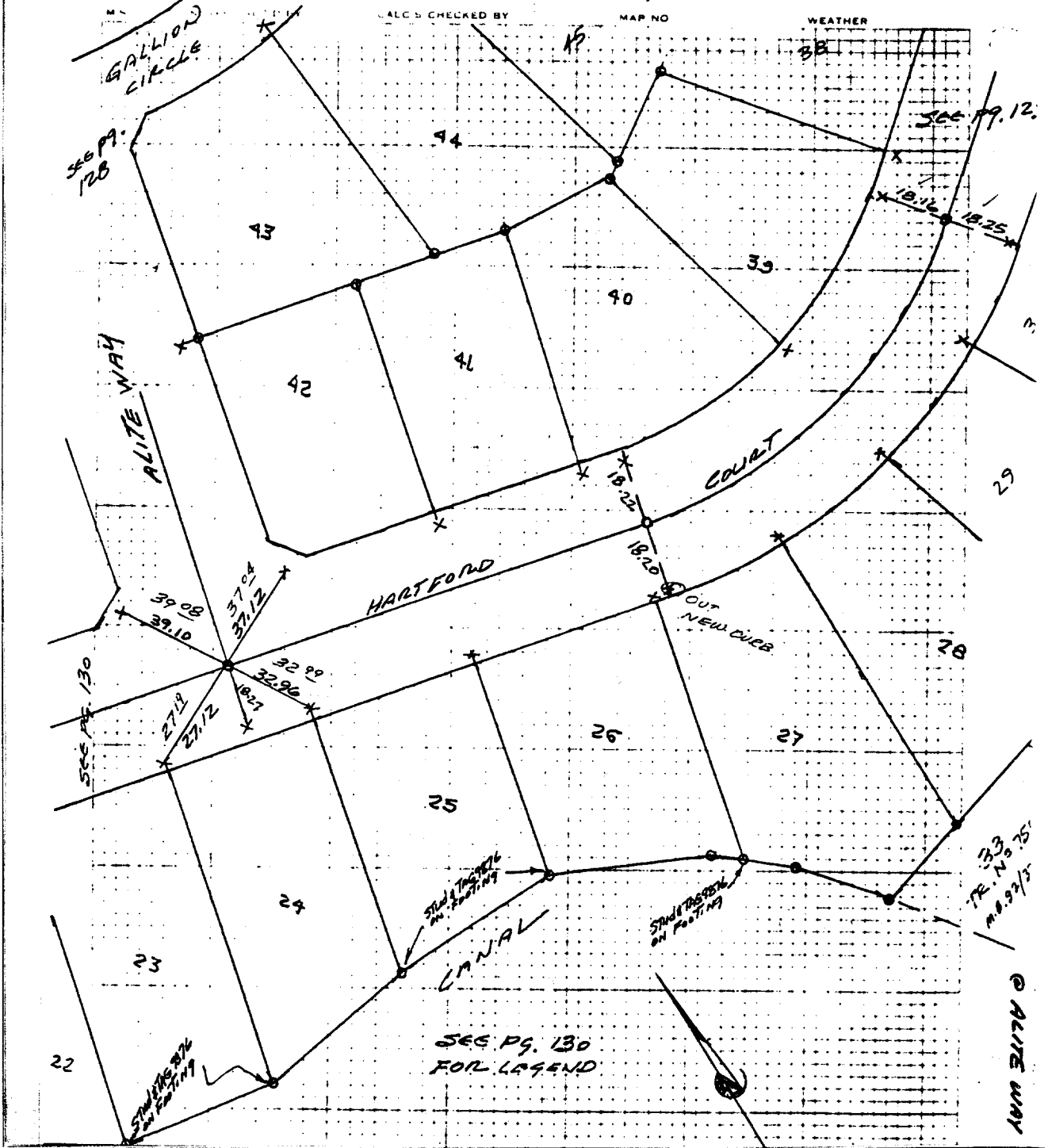


JO 76-247 TR. NO 7503-3 DATE 11/27/78
 FB 1039 PLATE 131 PARTY NO AND MEMBERS JOHN AGUILERA, RAY D. JESUS M.

Street: HARTFORD CT
 X-Street: ALITE WAY
 OFFICIAL USE ONLY



- ✕ FD. Ramset Nail on T/C
- FD. LD. & TK. on T/C
- FD. "C" Nail on T/C
- Set LD. & TK. on T/C

Scale:
 Date:
 Drawn by:
 W.O.:
 F.B.: 1039

OFFICIAL TIE PLAT
CITY OF RIVERSIDE

These ties are for the purpose of perpetuating the found monumentation. No claim is made as to the relationship of the points or lines shown hereon to true boundary locations.

TRACT 7503-3
 Sheet 1 of 1
 File No.: