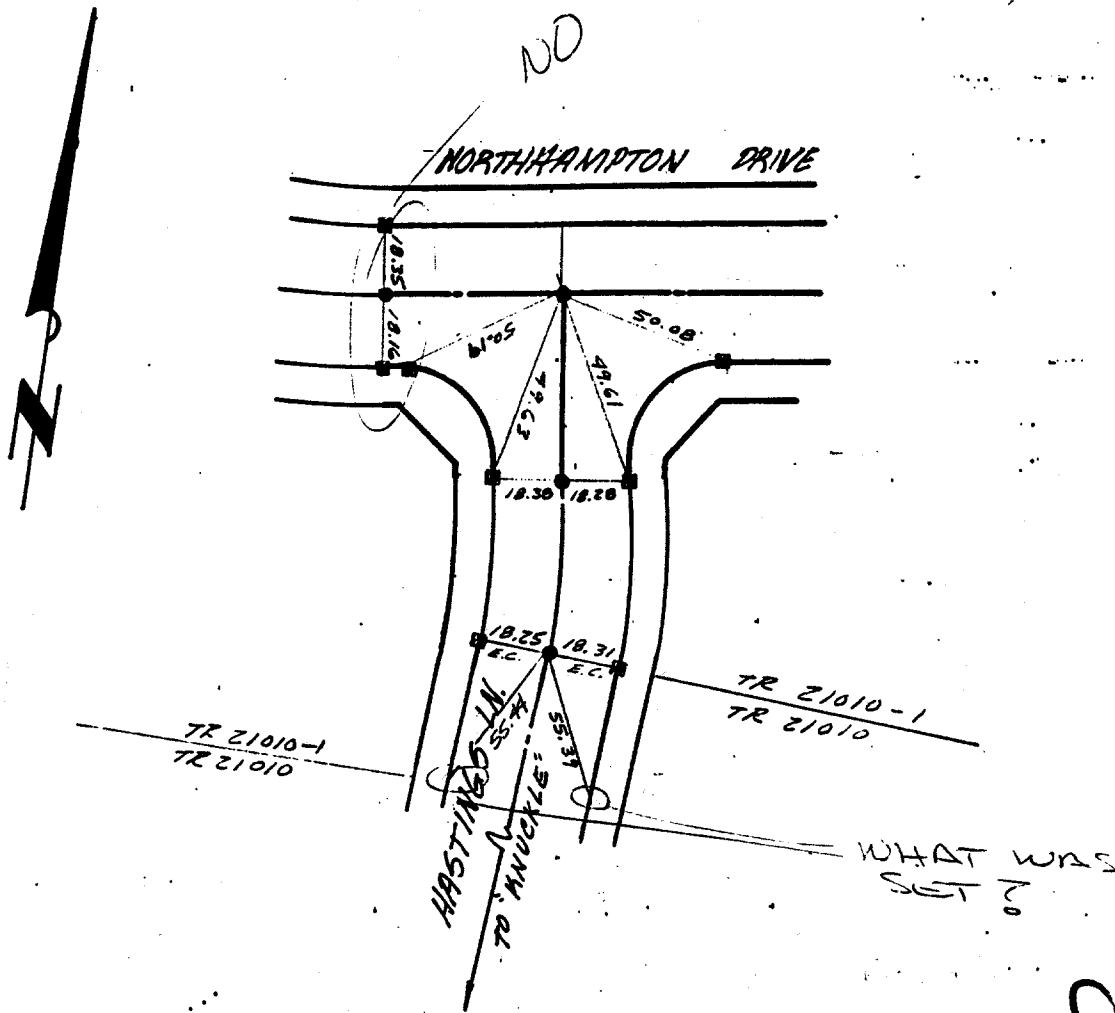


TR. 21010-1

**GABEL, COOK & BECKLUND**  
 Environmental • Hydrology • Planning  
 Civil Engineering • Surveying • Structures  
 647 North Main Street, Suite 1-B, Riverside, Calif. 92501  
 Telephone 714 788-8092

SHT 8

TIES TR. 21010-1



- INDICATES SET 1" IP-FWASH-RCE 21740
- ▼ INDICATES SET LEAD & TACK

HASTINGS LN  
C NORTHHAMPTON

- ✕ FD. Ramset Nail on T/C
- FD. LD. & TK. on T/C
- FD. "C" Nail on T/C
- Set LD. & TK. on T/C

Street: HASTINGS LN.  
 X-Street: NORTHAMPTON DR.  
 OFFICIAL USE ONLY

Scale:  
 Date:  
 Drawn by:  
 W.O.:  
 F.B.:

**OFFICIAL TIE PLAT**  
**CITY OF RIVERSIDE**

*These ties are for the purpose of perpetuating the found monumentation. No claim is made as to the relationship of the points or lines shown hereon to true boundary locations.*

TR 21010-1  
 Sheet 1 of 1  
 File No.: