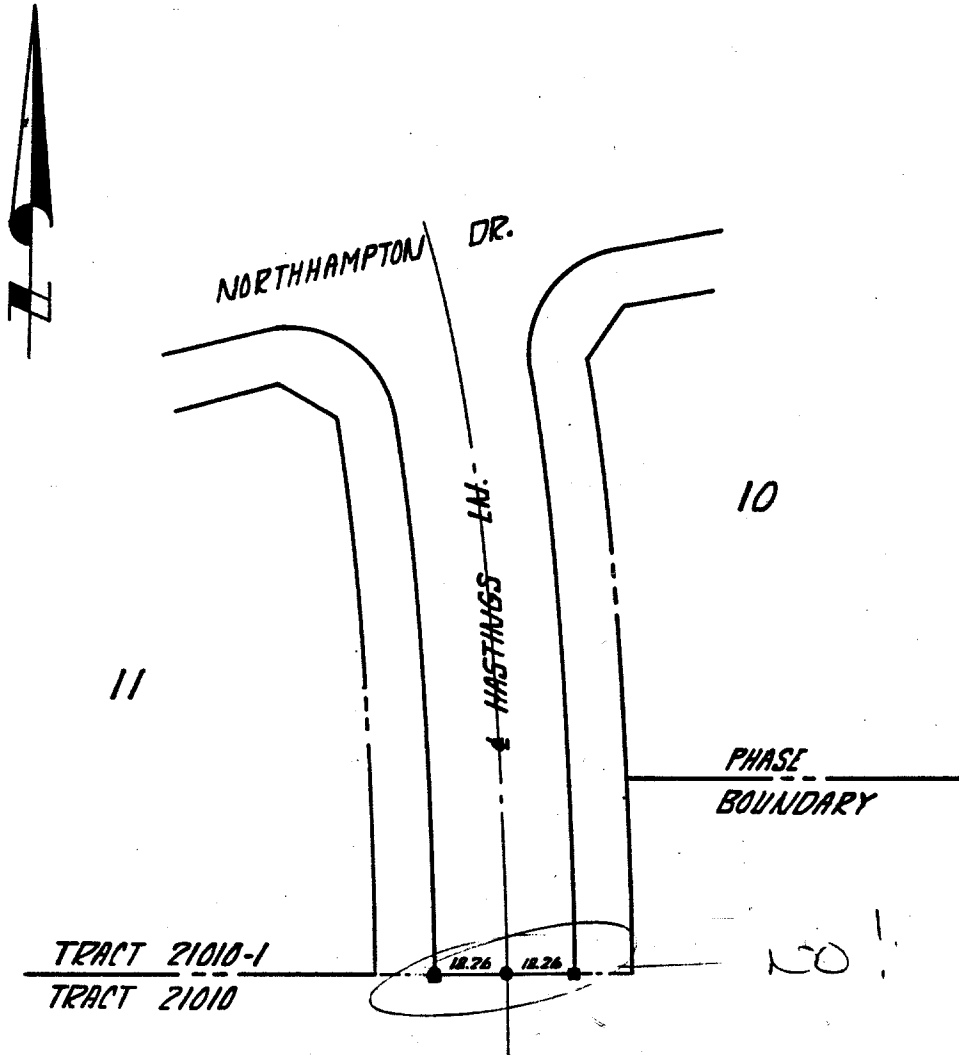


TR. 21010-1

**GABEL, COOK & BECKLUND**  
 Environmental • Hydrology • Planning  
 Civil Engineering • Surveying • Structures  
 647 North Main Street, Suite 1-8, Riverside, Calif. 92501  
 Telephone 714 788-8092

SHT #14

TIES



• INDICATES SET 1" I.P.-FLUSH-RCE 21740

- ✕ FD. Ramset Nail on T/C
- FD. "C" Nail on T/C

- FD. LD. & TK. on T/C
- Set LD. & TK. on T/C

Street: HASTINGS LN.

X-Street: S.W. of NORTHHAMPTON DR  
OFFICIAL USE ONLY

Scale: \_\_\_\_\_  
 Date: \_\_\_\_\_  
 Drawn by: \_\_\_\_\_  
 W.O.: \_\_\_\_\_  
 F.B.: \_\_\_\_\_

**OFFICIAL TIE PLAT**  
**CITY OF RIVERSIDE**

*These ties are for the purpose of perpetuating the found monumentation. No claim is made as to the relationship of the points or lines shown hereon to true boundary locations.*

TR 21010-1

Sheet 1 of 1

File No.: