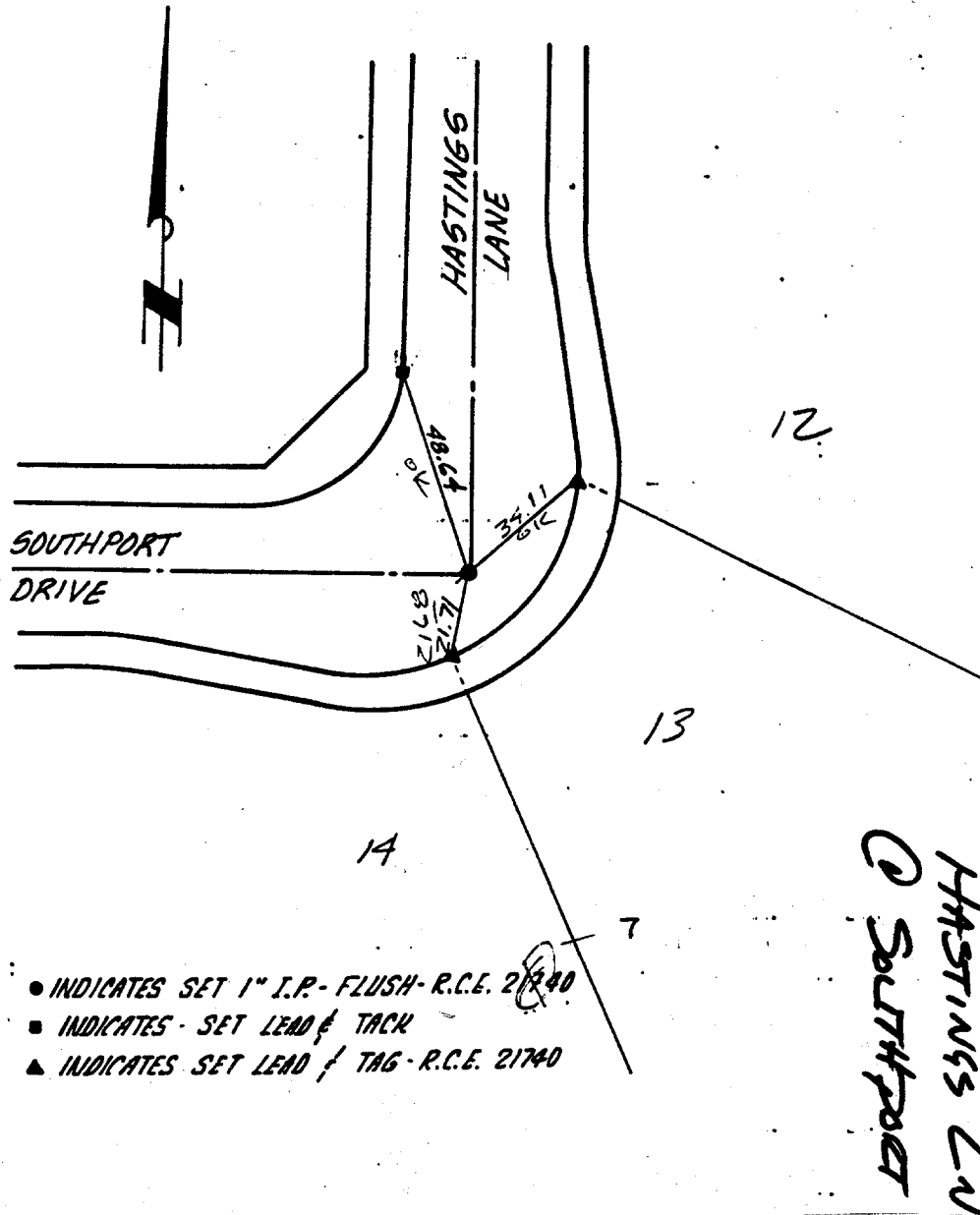


TRACT 21010

SHT 3 OF 5

**GABEL, COOK & BECKLUND**  
 Environmental • Hydrology • Planning  
 Civil Engineering • Surveying • Structures  
 647 North Main Street, Suite 1-B, Riverside, Calif. 92501  
 Telephone 714 788-8092

TIES TR. 21010



Street: HASTINGS LANE

X-Street: SOUTHPORT DRIVE

OFFICIAL USE ONLY

- ✕ FD. Ramset Nail on T/C
- FD. "C" Nail on T/C

- FD. LD. & TK. on T/C
- Set LD. & TK. on T/C

**OFFICIAL TIE PLAT**  
**CITY OF RIVERSIDE**

*These ties are for the purpose of perpetuating the found monumentation. No claim is made as to the relationship of the points or lines shown hereon to true boundary locations.*

TRACT 21010

Sheet **3** of **5**

File No.:

Scale:  
 Date:  
 Drawn by:  
 W.O.:  
 F.B.: