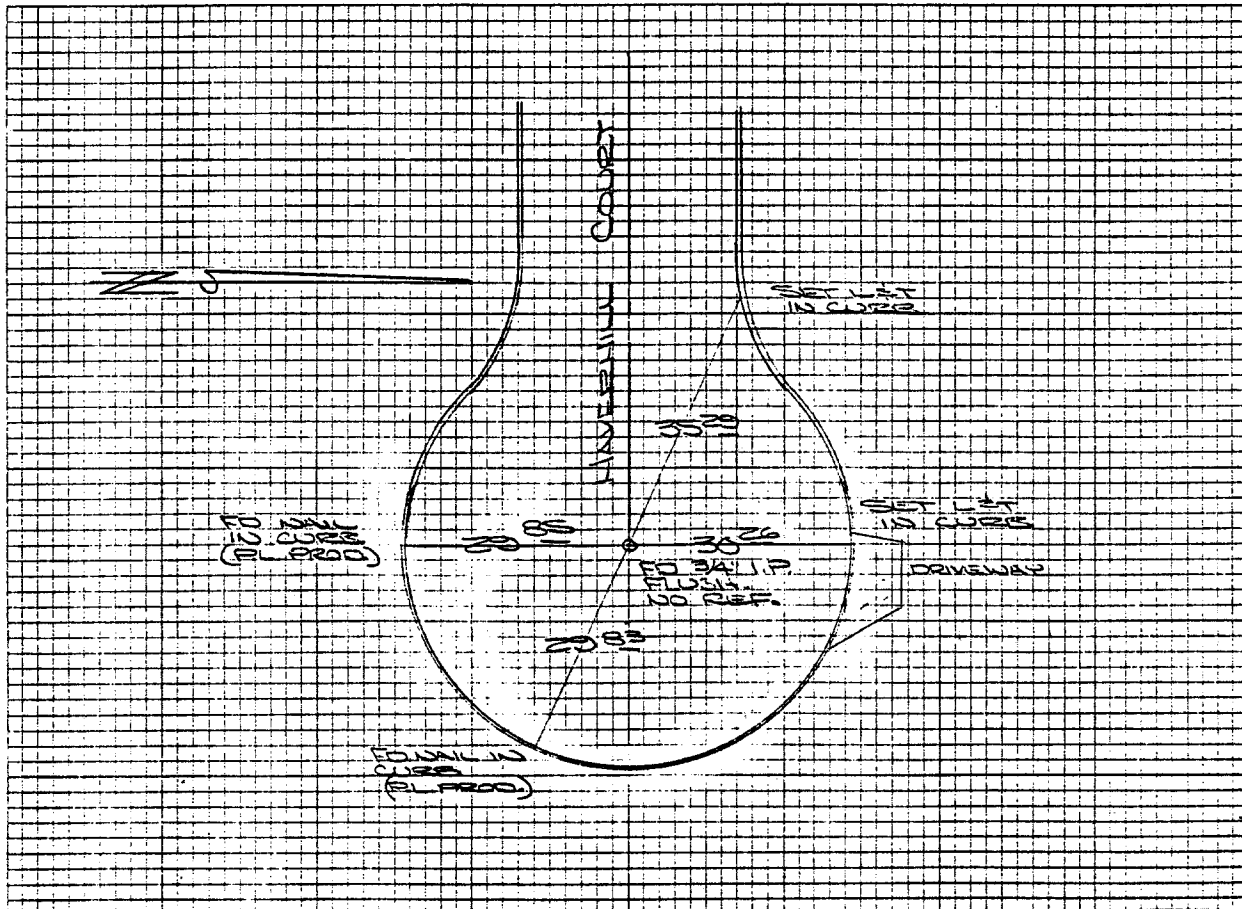


Street: **HAVERHILL CT**

X-Street: _____
OFFICIAL USE ONLY

<p>HISTORICAL DATA</p>		<p>HAVERHILL COURT CITY OF RIVERSIDE CA</p>
<p>TRANSIT TIES</p>		<p>CREWS: STEELE RAMSTON ALLEN JULY 3, '78 CORS 968/78 CRFS 968/78</p>



- × FD. Ramset Nail on T/C
- FD. LD. & TK. on T/C
- FD. "C" Nail on T/C
- Set LD. & TK. on T/C

Scale: _____
 Date: _____
 Drawn by: _____
 W.O.: _____
 F.B.: _____

OFFICIAL TIE PLAT
CITY OF RIVERSIDE

These ties are for the purpose of perpetuating the found monumentation. No claim is made as to the relationship of the points or lines shown hereon to true boundary locations.

Sheet 1 of 1
 File No.: _____