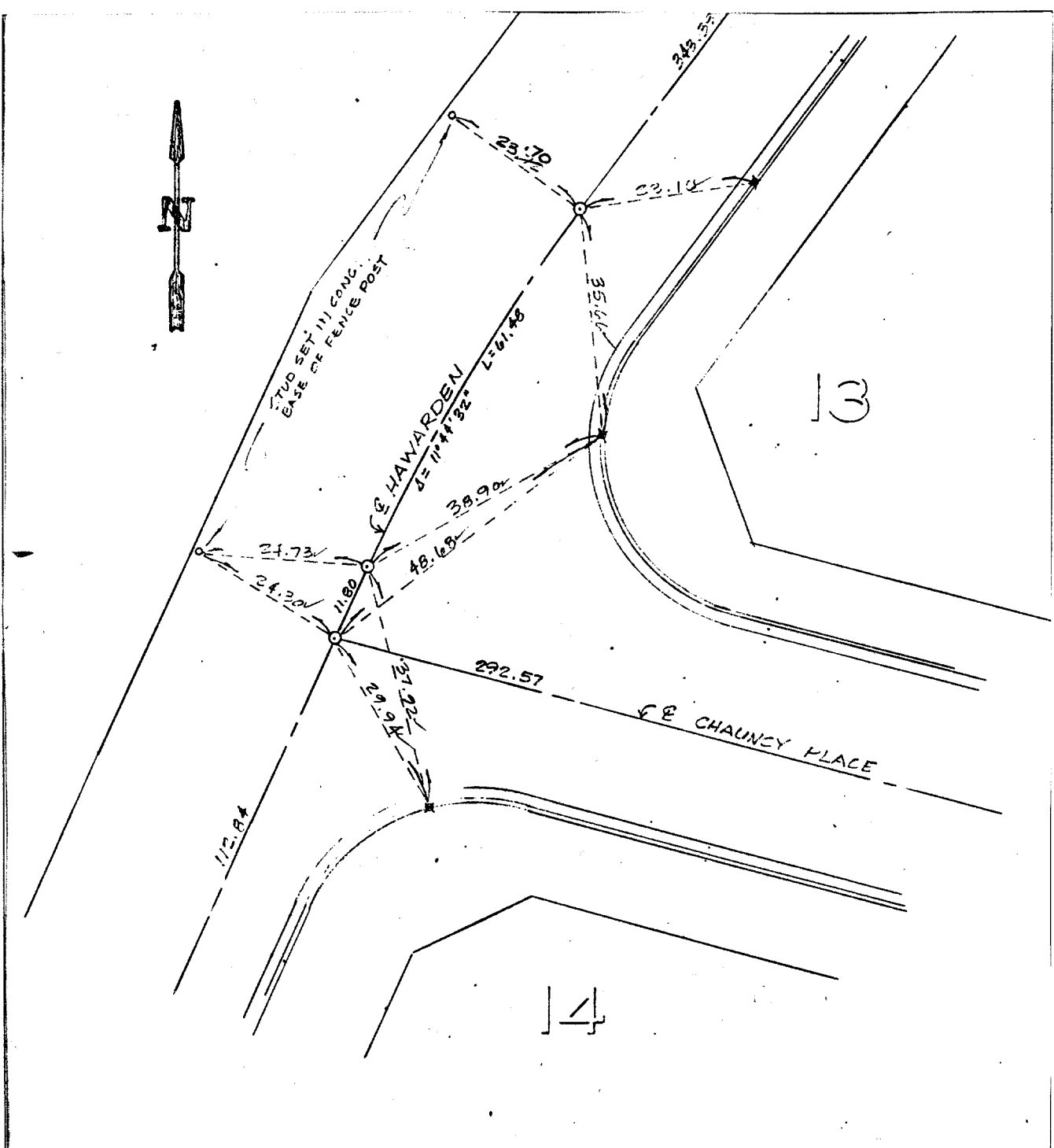


Street: **HAWARDEN**

X-Street: **CHAUNCY PLACE**  
OFFICIAL USE ONLY



o Indicates set 3/4" I.P. tagged RCE 13116, flush unless otherwise noted.  
x Indicates ties. Nail set in top of curb

- ✕ FD. Ramset Nail on T/C
- FD. LD. & TK. on T/C
- FD. "C" Nail on T/C
- Set LD. & TK. on T/C

Scale: 1" = 20' ±  
Date: 4/11/85  
Drawn by:  
W.O.:  
F.B.:

**OFFICIAL TIE PLAT**  
**CITY OF RIVERSIDE**

*These ties are for the purpose of perpetuating the found monumentation. No claim is made as to the relationship of the points or lines shown hereon to true boundary locations.*

TRACT 18763  
Sheet 2 of 11  
File No.: