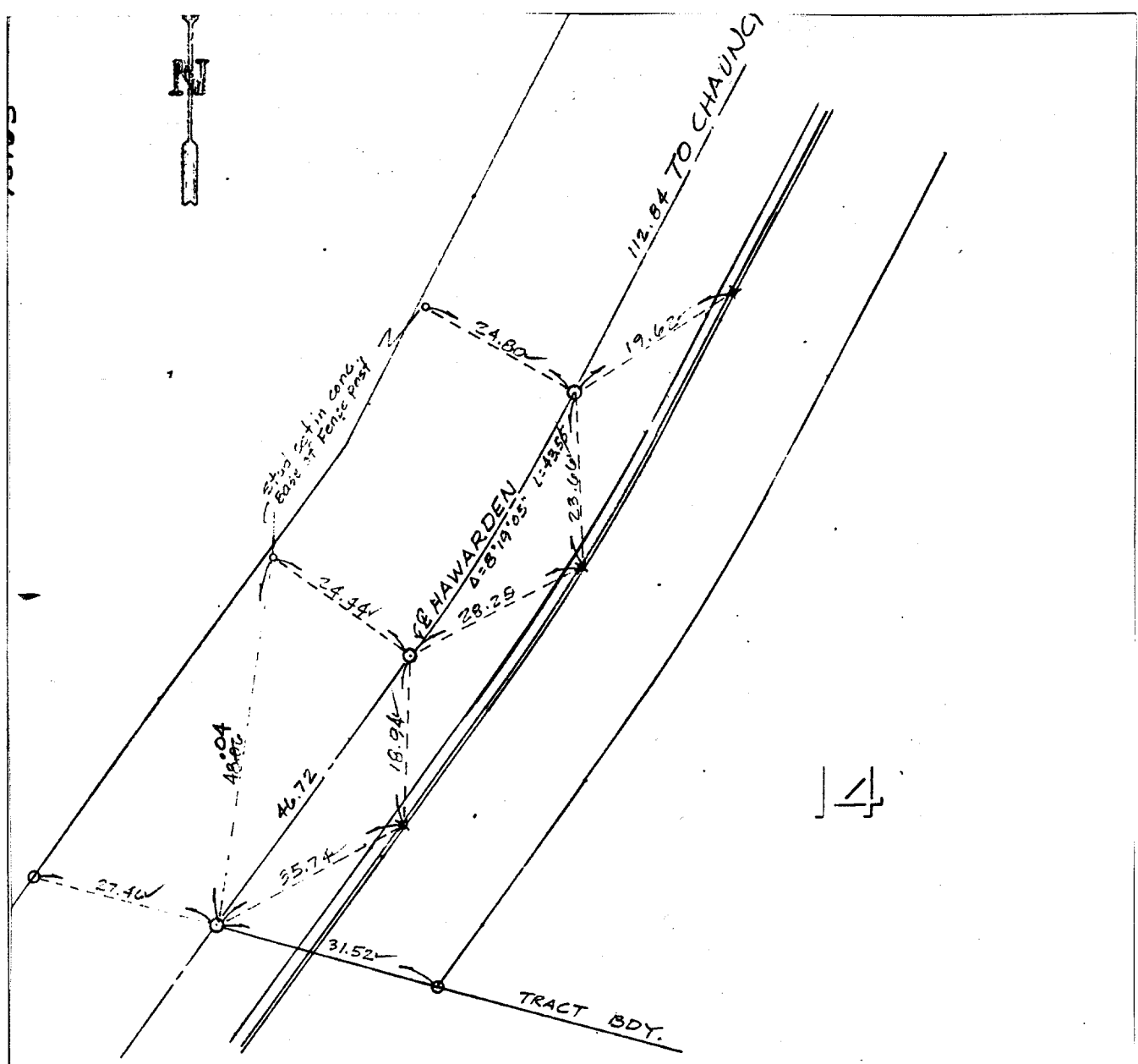


Street: **HAWARDEN**

X-Street: **S'LY OF CHAUNCEY** (TRACT BOUNDARY 18763)  
OFFICIAL USE ONLY



○ Indicates set 3/4" I.P. tagged RCE 13116, flush unless otherwise noted.  
x Indicates ties Nails set in top of curb.

FIELD CR'D FANNI-KUZ-BELDEN 4-12-85

G.V.W. ASSOCIATES, INC. WALNUT, CALIFORNIA	<b>MONUMENT TIES</b> FOR TRACT 18763	SHEET NO. 1 OF 11 DATE 4/11/85 SCALE 1" = 20' ±
---	---	---

- ✕ FD. Ramset Nail on T/C
- FD. LD. & TK. on T/C
- FD. "C" Nail on T/C
- Set LD. & TK. on T/C

Scale: 1" = 20' ±  
Date: 4/11/85  
Drawn by:  
W.O.:  
F.B.:

**OFFICIAL TIE PLAT**  
CITY OF RIVERSIDE

*These ties are for the purpose of perpetuating the found monumentation. No claim is made as to the relationship of the points or lines shown hereon to true boundary locations.*

TRACT 18763

Sheet 1 of 1  
File No.: