

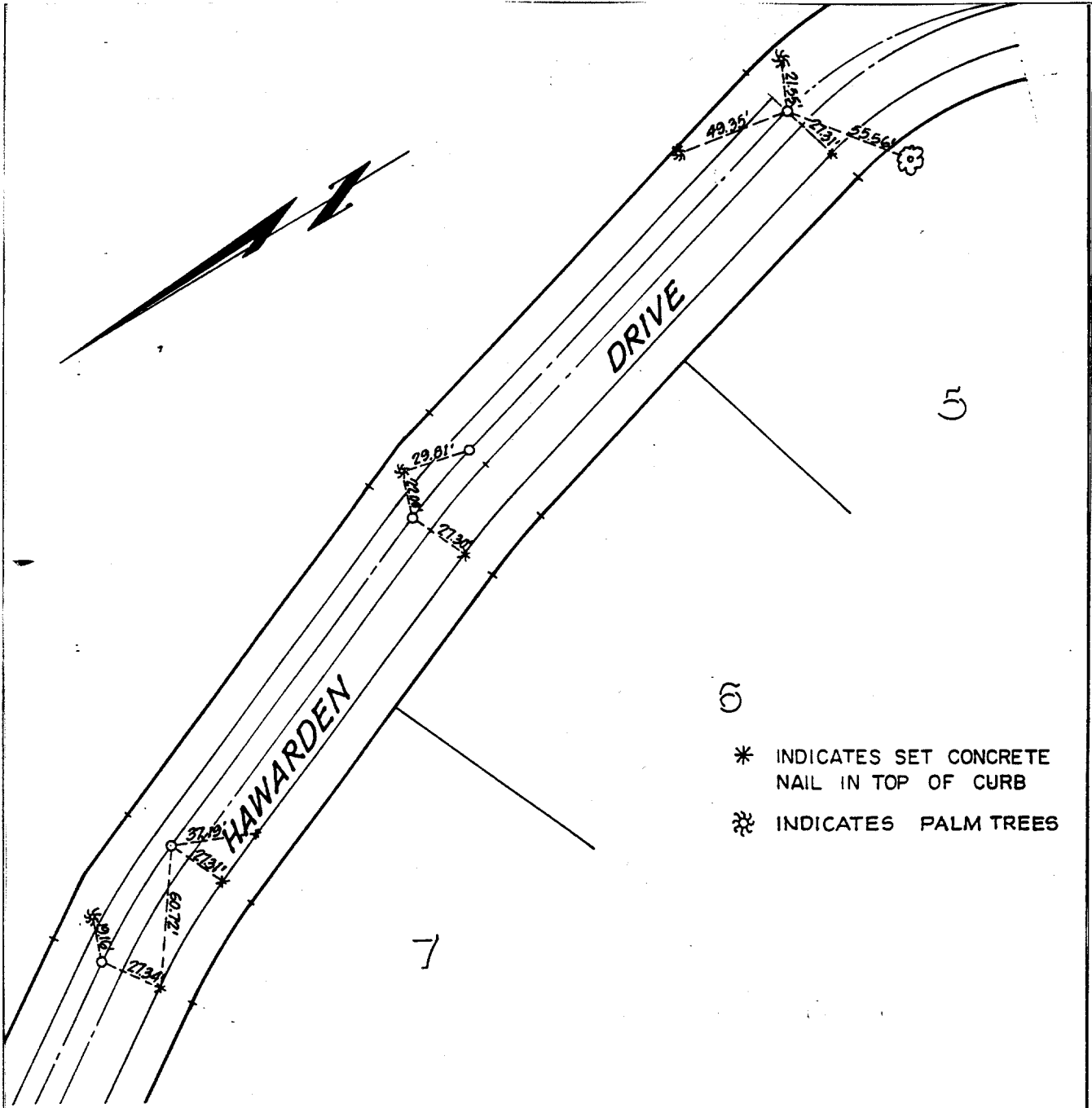
Street: **HAWARDEN DR.**

8'LY

X-Street:

DE GRAZIA RD.

OFFICIAL USE ONLY



- * INDICATES SET CONCRETE NAIL IN TOP OF CURB
- INDICATES PALM TREES

HAWKINS, ROBERTSON & ASSOC.
ENGINEERS & SURVEYORS
RIVERSIDE, CALIF. 92506 3784 ELIZABETH STREET PH. 684-8622

DRWN BY: A.V.C. DATE: 4/21/87
W.O. 3618 SCALE: NONE

- × FD. Ramset Nail on T/C
- FD. LD. & TK. on T/C
- FD. "C" Nail on T/C
- Set LD. & TK. on T/C

Scale: NONE
Date: 4/9/87
Drawn by:
W.O.: 3618
F.B.:

OFFICIAL TIE PLAT
CITY OF RIVERSIDE

These ties are for the purpose of perpetuating the found monumentation. No claim is made as to the relationship of the points or lines shown hereon to true boundary locations.

TRACT No. 10005
Sheet 2 of 2
File No.: