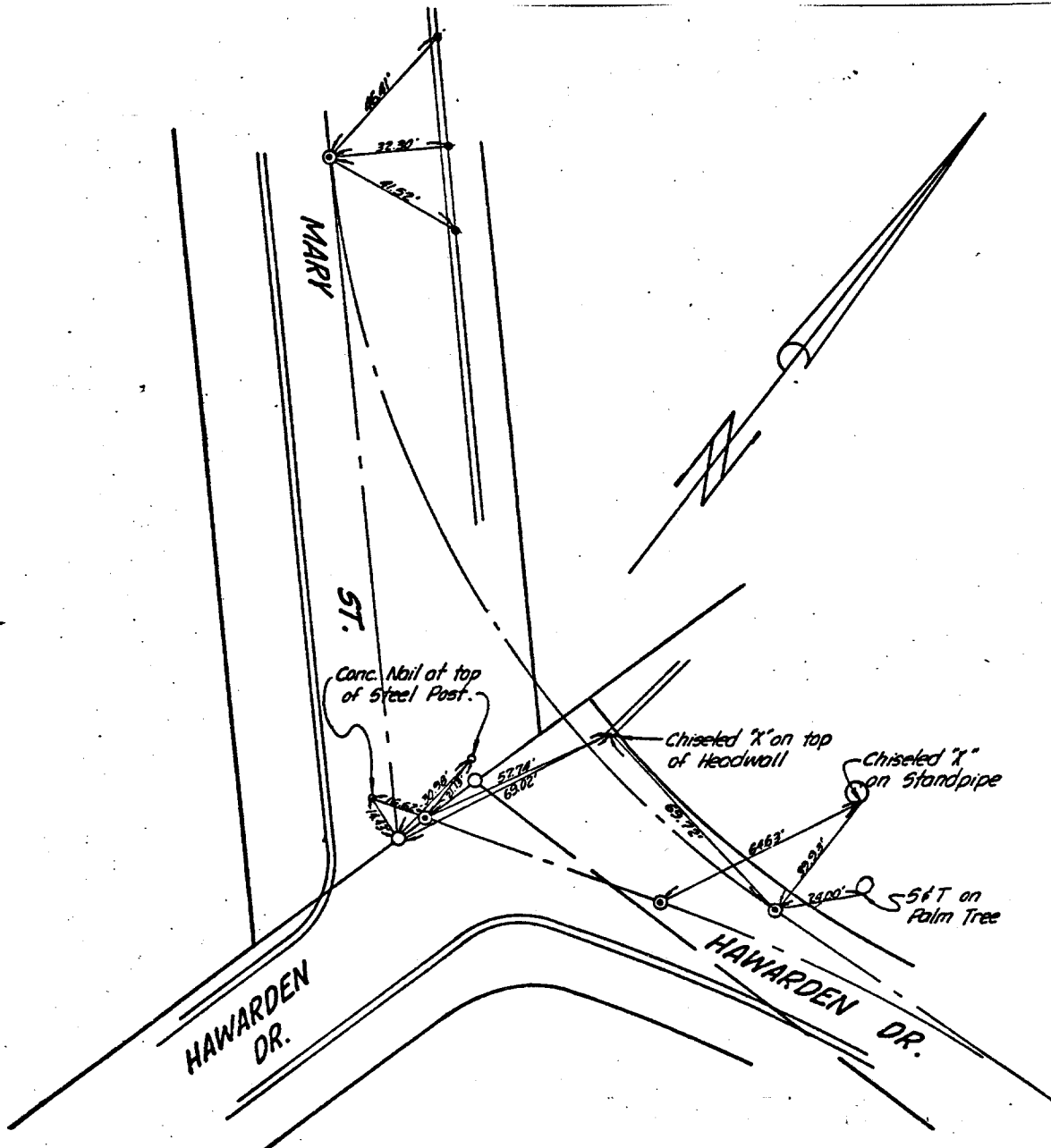


Street: **HAWARDEN DR.**

X-Street: _____

MARY ST.

OFFICIAL USE ONLY



TTW/LS/LLK @ MARY ST

- Indicates Set Nail on Curb.
- Indicates 3/4" I.P. with plastic plug stamped R.C.E. 862, Flush
- ⊙ Indicates 1/2 Brass Cap stamped R.C.E. 862, Flush

JE DAVIDSON ASSOCIATES
3426 TENTH STREET
RIVERSIDE CALIFORNIA

MONUMENT TIES
FOR TRACT 8116-1

SHEET NO. 4 OF 4
DATE 3/1/79
SCALE 1" = 40'

- ✕ FD. Ramset Nail on T/C
- FD. LD. & TK. on T/C
- FD. "C" Nail on T/C
- Set LD. & TK. on T/C

Scale: _____
Date: _____
Drawn by: _____
W.O.: _____
F.B.: _____

OFFICIAL TIE PLAT
CITY OF RIVERSIDE

These ties are for the purpose of perpetuating the found monumentation. No claim is made as to the relationship of the points or lines shown hereon to true boundary locations.

TRACT 8116-1

Sheet 1 of 1

File No.: _____