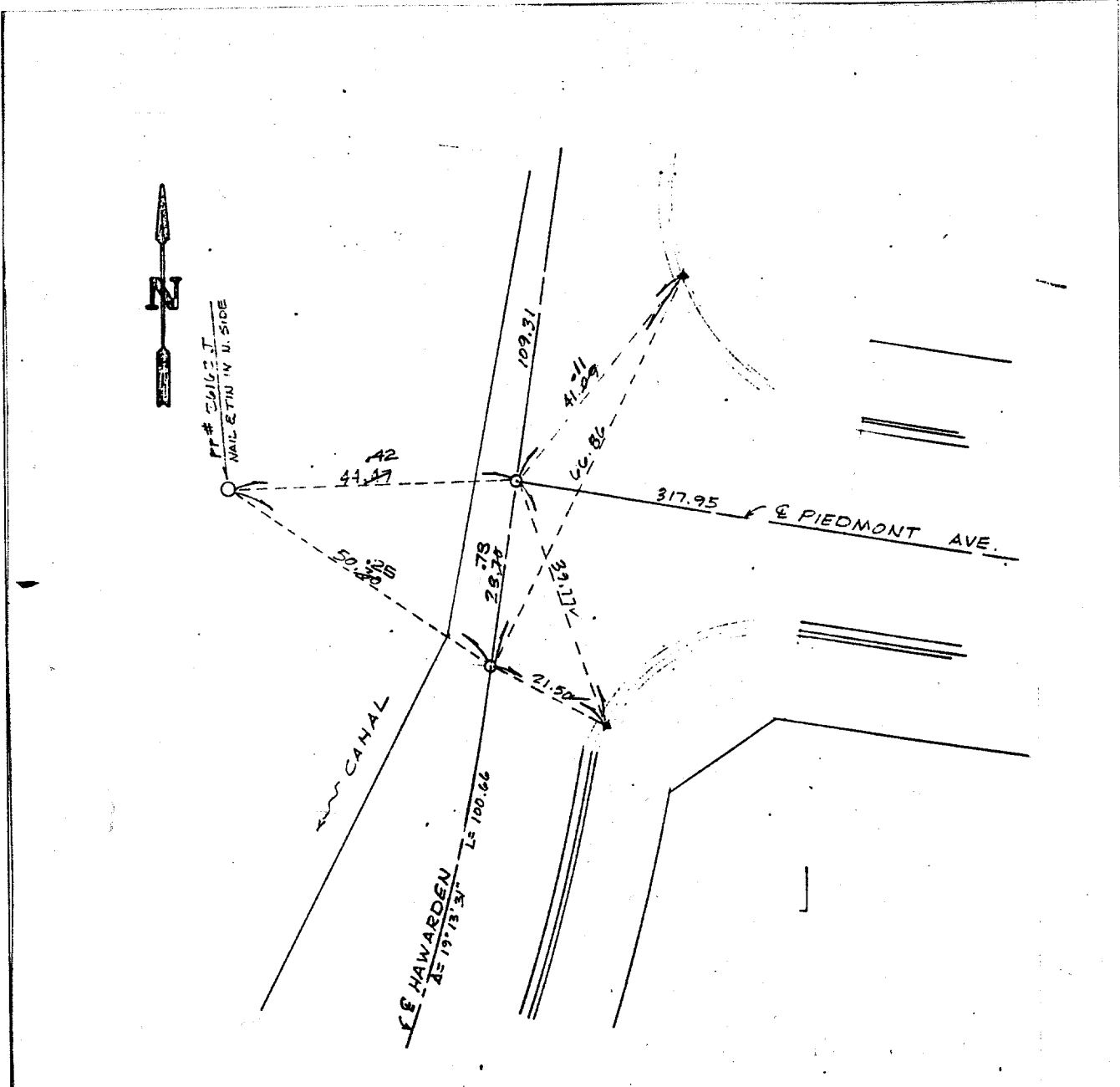


Street: **HAWARDEN**

OFFICIAL USE ONLY

X-Street:

**PIEDMONT AVE**



$\circ$  Indicates set 3/4" I.P. tagged RCE 13116, flush unless otherwise noted.  
 $\times$  Indicates ties Nails set in top of curb.

FIELD CK. FANN-KURT-BELDEN 9-12-85

G.V.W. ASSOCIATES, INC. WALNUT, CALIFORNIA	<b>MONUMENT TIES</b> FOR TRACT <b>18763</b>	SHEET NO. <u>4 OF 11</u> DATE <u>4/11/85</u> SCALE <u>1" = 20' ±</u>
---	--	--

- $\times$  FD. Ramset Nail on T/C
- $\bullet$  FD. LD. & TK. on T/C
- $\blacksquare$  FD. "C" Nail on T/C
- $\circ$  Set LD. & TK. on T/C

Scale: \_\_\_\_\_  
 Date: \_\_\_\_\_  
 Drawn by: \_\_\_\_\_  
 W.O.: \_\_\_\_\_  
 F.B.: \_\_\_\_\_

**OFFICIAL TIE PLAT**  
**CITY OF RIVERSIDE**

*These ties are for the purpose of perpetuating the found monumentation. No claim is made as to the relationship of the points or lines shown hereon to true boundary locations.*

TRACT 18763

Sheet 4 of 11  
 File No.: