

Street: **HAWARDEN DR**

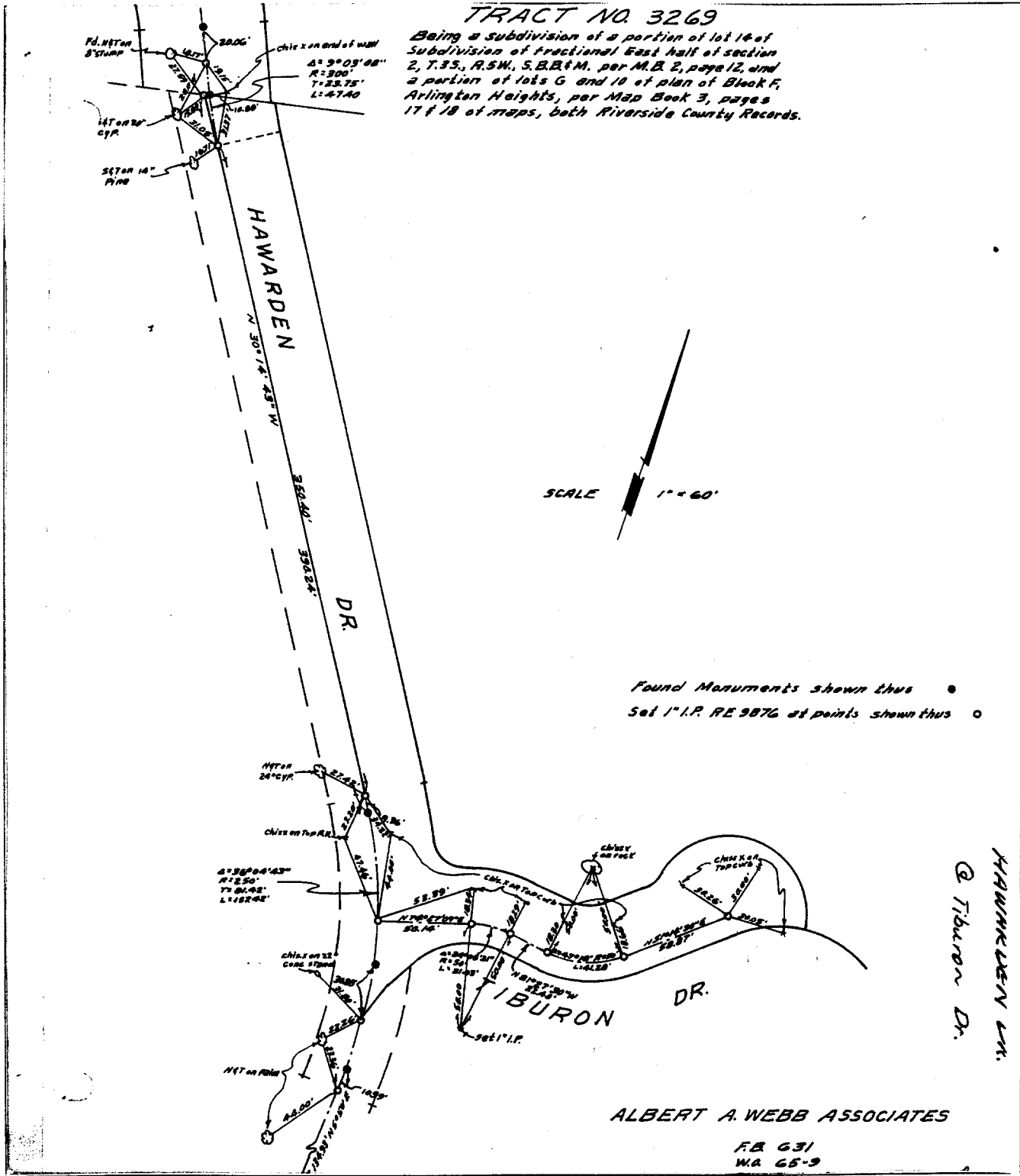
OFFICIAL USE ONLY

X-Street: **TIBURON DR**

HAWARDEN LN.  
@ Tiburon Dr.

**TRACT NO. 3269**

Being a subdivision of a portion of lot 14 of Subdivision of fractional East half of section 2, T.35, R.5W, S.B.R.M. per M.B. 2, page 12, and a portion of lots G and 10 of plan of Block F, Arlington Heights, per Map Book 3, pages 17 & 18 of maps, both Riverside County Records.



Found Monuments shown thus ●  
Set 1" I.P. RE 9876 at points shown thus ○

ALBERT A. WEBB ASSOCIATES  
F.B. 631  
W.A. 65-9

- ✕ FD. Ramset Nail on T/C
- FD. LD. & TK. on T/C
- FD. "C" Nail on T/C
- Set LD. & TK. on T/C

Scale:  
Date:  
Drawn by:  
W.O.: 65-9  
F.B.: 631

**OFFICIAL TIE PLAT**  
**CITY OF RIVERSIDE**

*These ties are for the purpose of perpetuating the found monumentation. No claim is made as to the relationship of the points or lines shown hereon to true boundary locations.*

TR. 3269  
Sheet 1 of 1  
File No.: