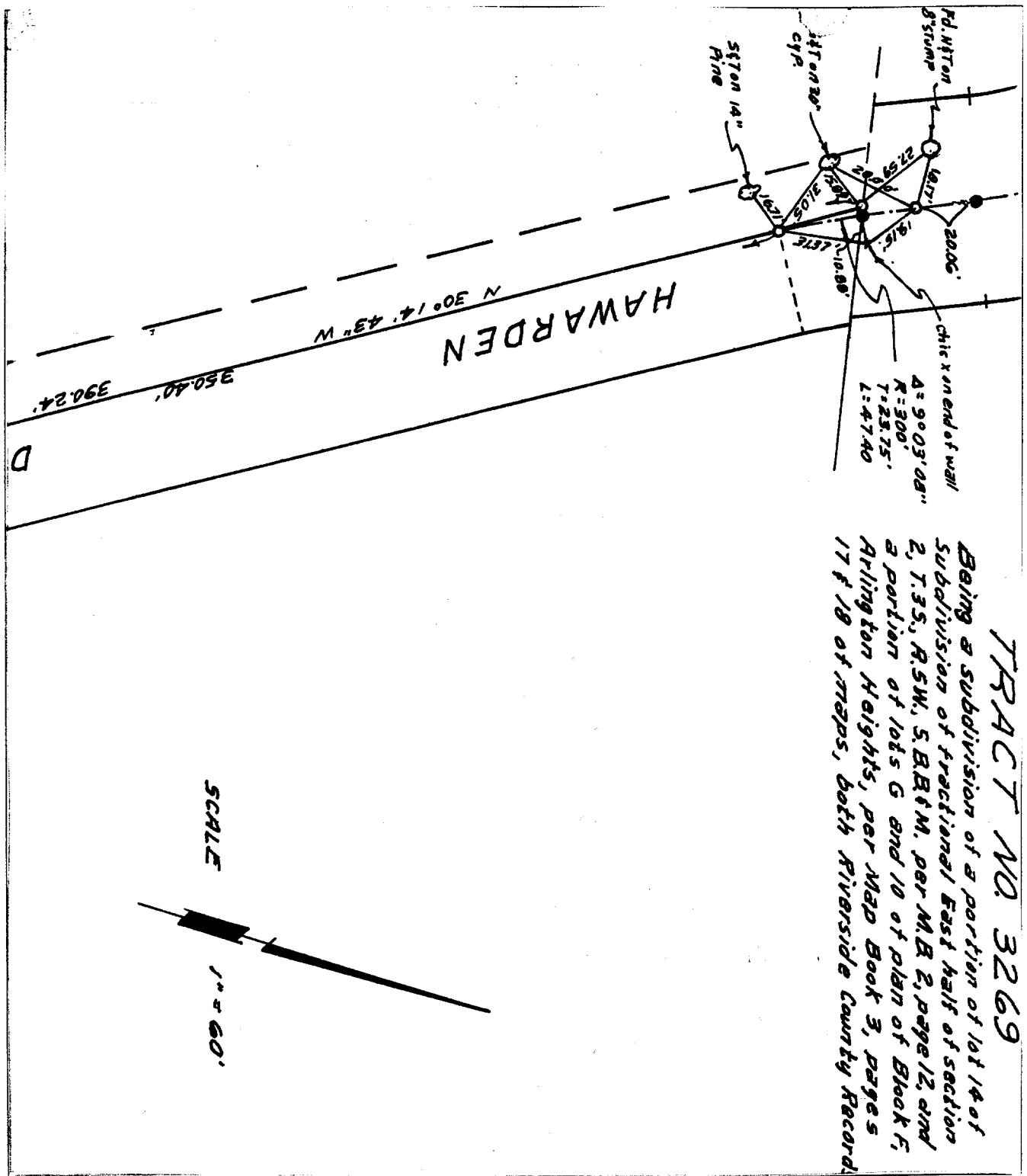


Street: **HAWARDEN DR.**

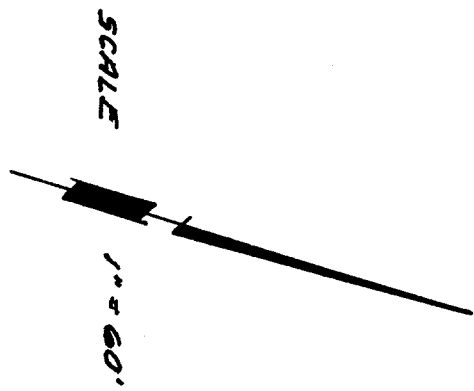
X-Street: **NP TIBURON DR.**

OFFICIAL USE ONLY



**TRACT NO. 3269**

Being a subdivision of a portion of lot 14 of subdivision of fractional East half of section 2, T.35, R.5W, S.B.R.4M. per M.B.R. 2, page 12, and a portion of lots G and 10 of plan of Block F, Arlington Heights, per Map Book 3, pages 17 & 18 of maps, both Riverside County Records.



- ✕ FD. Ramset Nail on T/C
- FD. LD. & TK. on T/C
- FD. "C" Nail on T/C
- Set LD. & TK. on T/C

Scale: 1" = 60'

Date:

Drawn by:

W.O.: 65-9

F.B.: 631

**OFFICIAL TIE PLAT**  
CITY OF RIVERSIDE

*These ties are for the purpose of perpetuating the found monumentation. No claim is made as to the relationship of the points or lines shown hereon to true boundary locations.*

TRACT NO. 3269

Sheet 1 of 1

File No.: