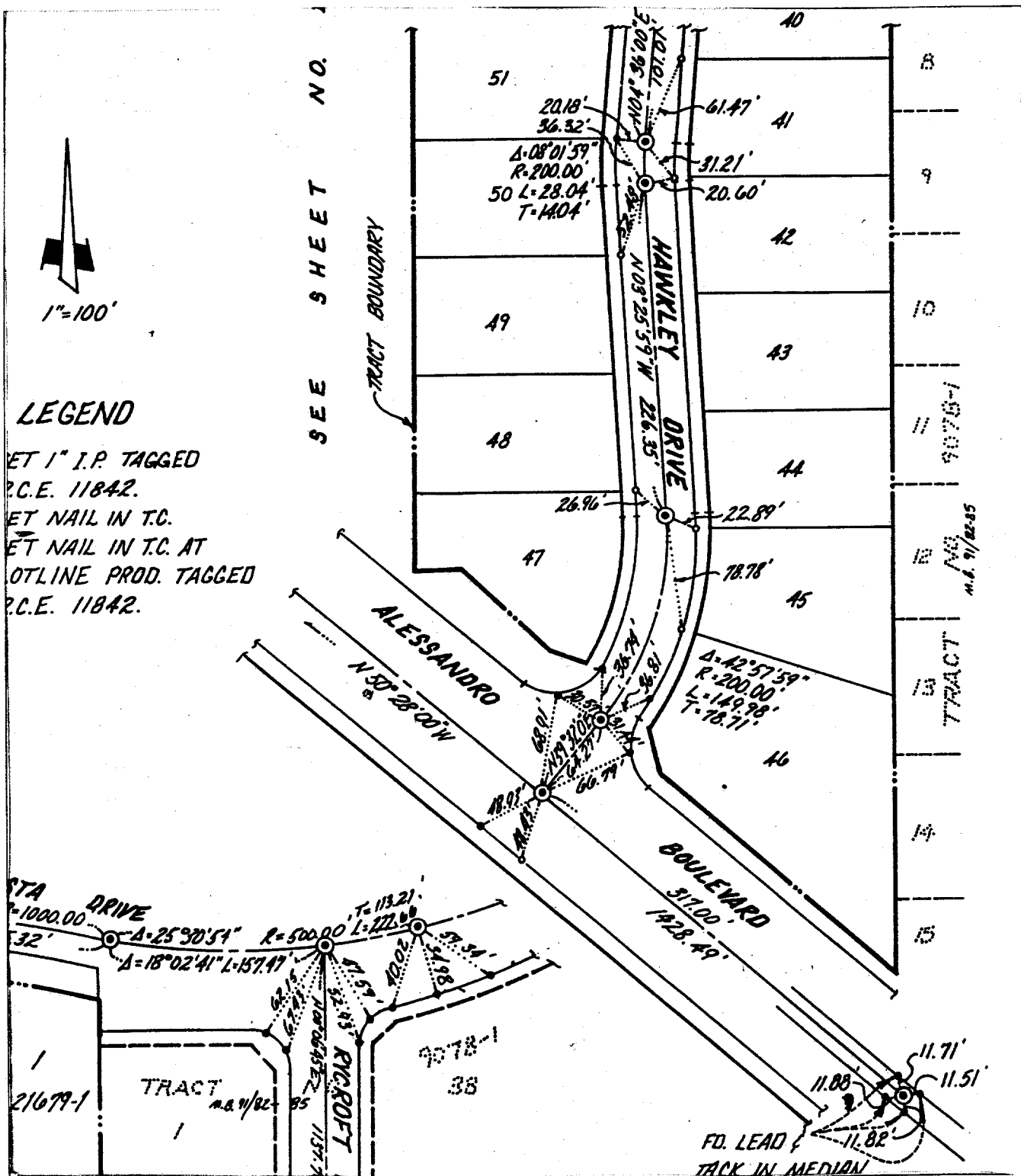


Street: **HAWKLEY DR**

X-Street: **ALESSANDRO BLVD.**

OFFICIAL USE ONLY



LEGEND

SET 1" I.P. TAGGED
P.C.E. 11842.
SET NAIL IN T.C.
SET NAIL IN T.C. AT
OUTLINE PROD. TAGGED
P.C.E. 11842.

- ✕ FD. Ramset Nail on T/C
- FD. LD. & TK. on T/C
- FD. "C" Nail on T/C
- Set LD. & TK. on T/C

Scale:
Date: 6/13/88
Drawn by:
W.O.: 86-90
F.B.:

OFFICIAL TIE PLAT
CITY OF RIVERSIDE

These ties are for the purpose of perpetuating the found monumentation. No claim is made as to the relationship of the points or lines shown hereon to true boundary locations.

TRACT NO. 21679-1
Sheet 4 of 4
File No.: