

40871F

Street: Arlington Ave X-Street: Jefferson St. # 34
OFFICIAL USE ONLY

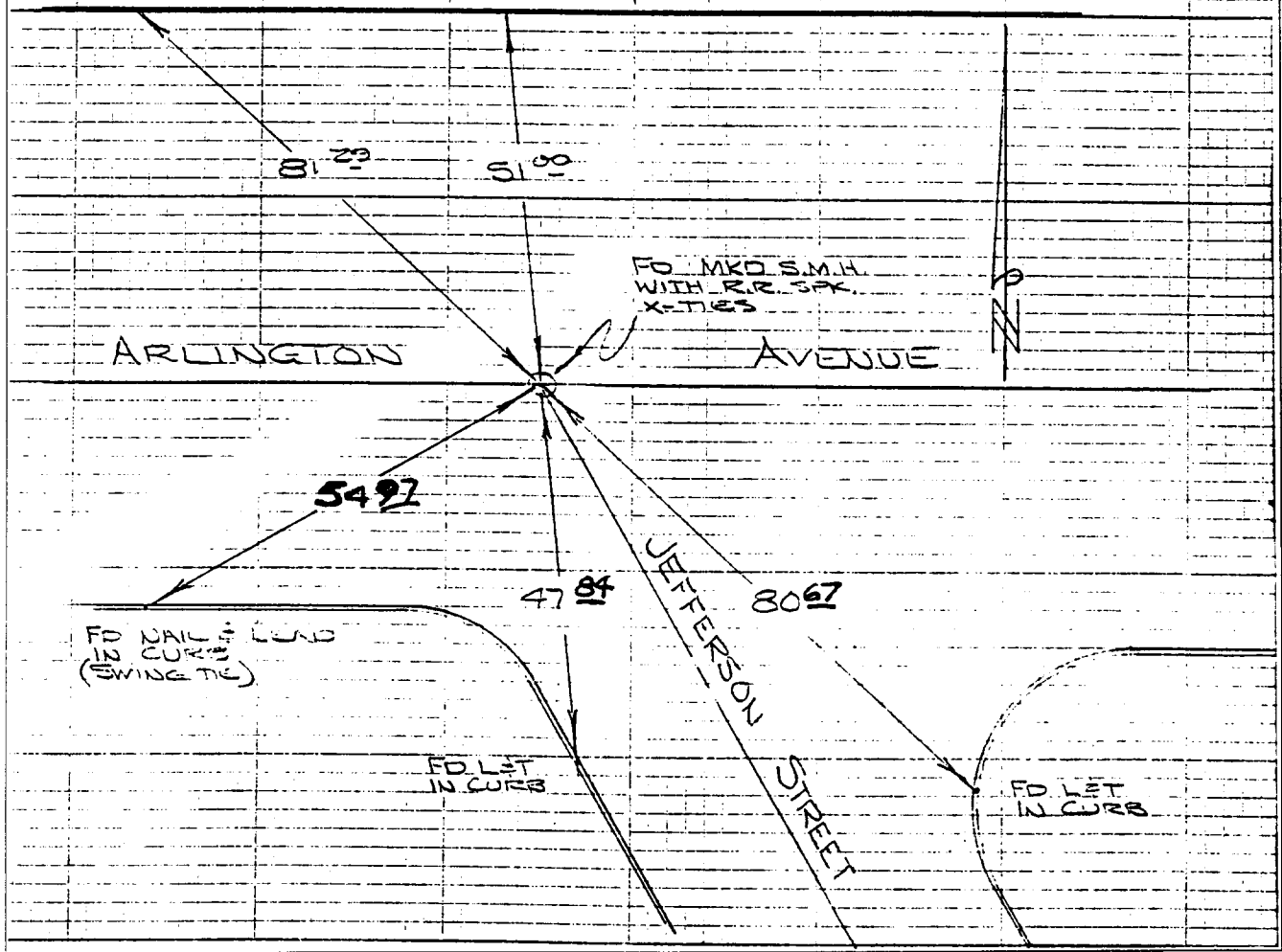
JEFFERSON
AT ARLINGTON

HISTORICAL
DATA
CRFB W/SS

TRANSIT TIES

CREW:
STEELE
EWING
NEW
MAR 13, 1975
CRFB 913/45

SET LET'S IN CURB



- ✕ FD. Ramset Nail on T/C
- FD. "C" Nail on T/C

- FD. LD. & TK. on T/C
- Set LD. & TK. on T/C

Scale:
Date:
Drawn by:
W.O.:
F.B.:

OFFICIAL TIE PLAT

CITY OF RIVERSIDE

These ties are for the purpose of perpetuating the found monumentation. No claim is made as to the relationship of the points or lines shown hereon to true boundary locations.

Sheet 1 of 1
File No.: