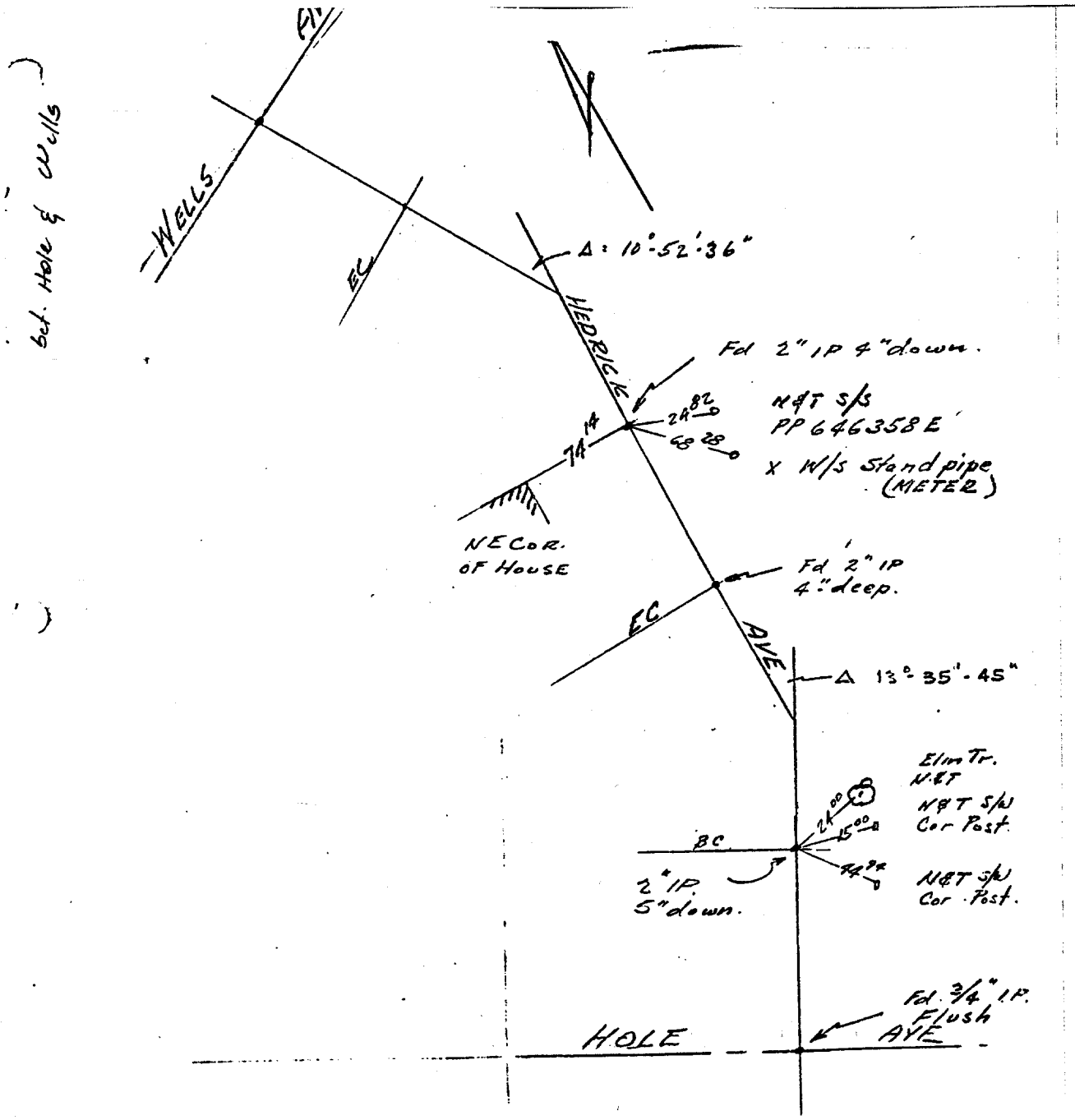


Street: **HEDRICK**

OFFICIAL USE ONLY

X-Street: **HOLE & WELLS**



Note! PI POINTS WERE NOT SET.

RIV. CO. 730
FB 617/31

- ✕ FD. Ramset Nail on T/C
- FD. LD. & TK. on T/C
- FD. "C" Nail on T/C
- Set LD. & TK. on T/C

Scale:
Date:
Drawn by:
W.O.:
F.B.: 617/31

OFFICIAL TIE PLAT
CITY OF RIVERSIDE

These ties are for the purpose of perpetuating the found monumentation. No claim is made as to the relationship of the points or lines shown hereon to true boundary locations.

Sheet 1 of 1
File No.: