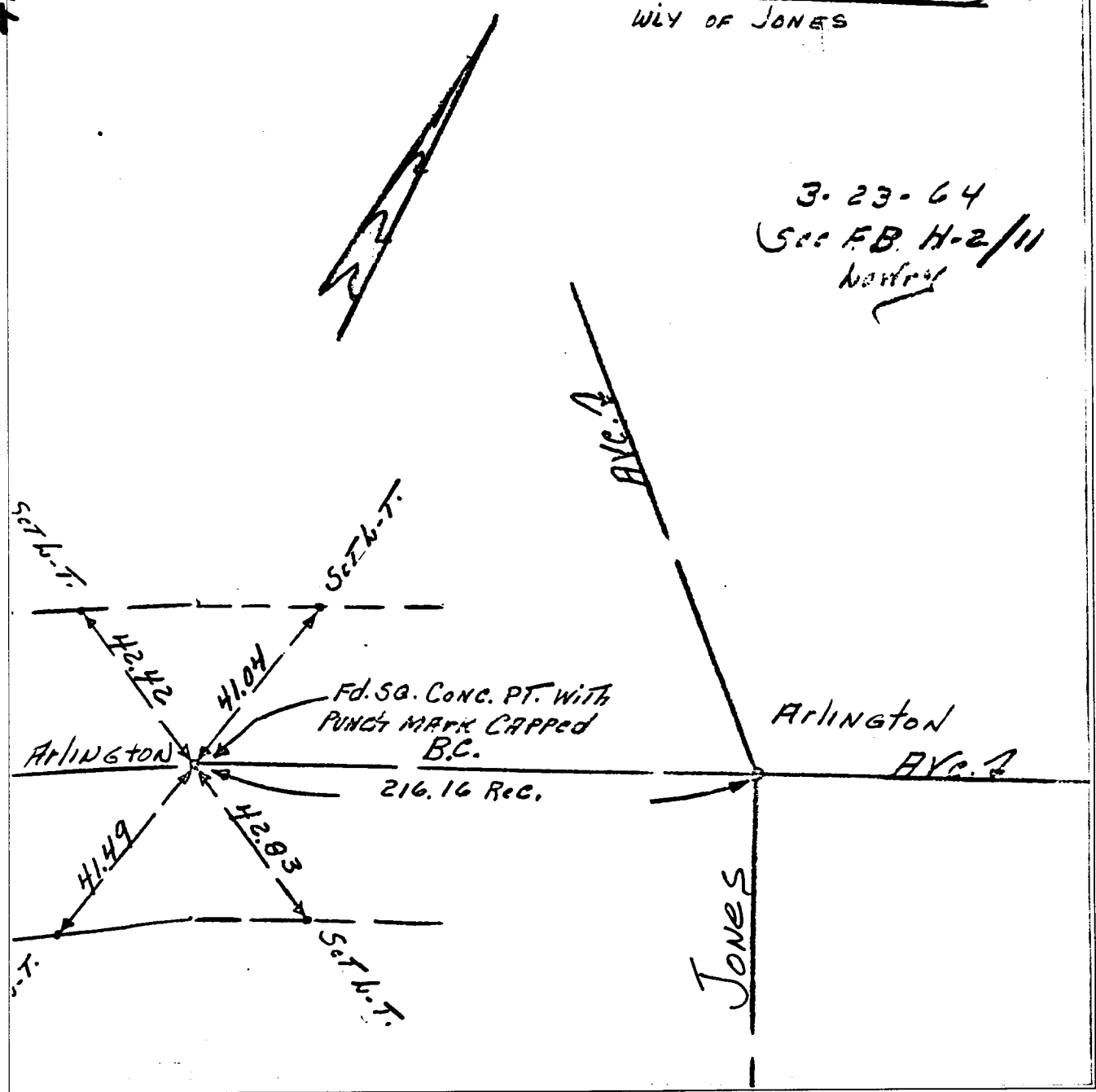


410.71X

✓ ARLINGTON AVE.
WLY OF JONES

3.23.64
Sec. F.B. H-2/11
Newport



- ✗ FD. Ramset Nail on T/C
- FD. LD. & TK. on T/C
- FD. "C" Nail on T/C
- Set LD. & TK. on T/C

Street: Arlington Ave

X-Street: Jones St.

OFFICIAL USE ONLY

36

Scale:

Date:

Drawn by:

W.O.:

F.B.:

OFFICIAL TIE PLAT

CITY OF RIVERSIDE

These ties are for the purpose of perpetuating the found monumentation. No claim is made as to the relationship of the points or lines shown hereon to true boundary locations.

Sheet 1 of 1

File No.: