

"TRANSIT & SWING TIES"

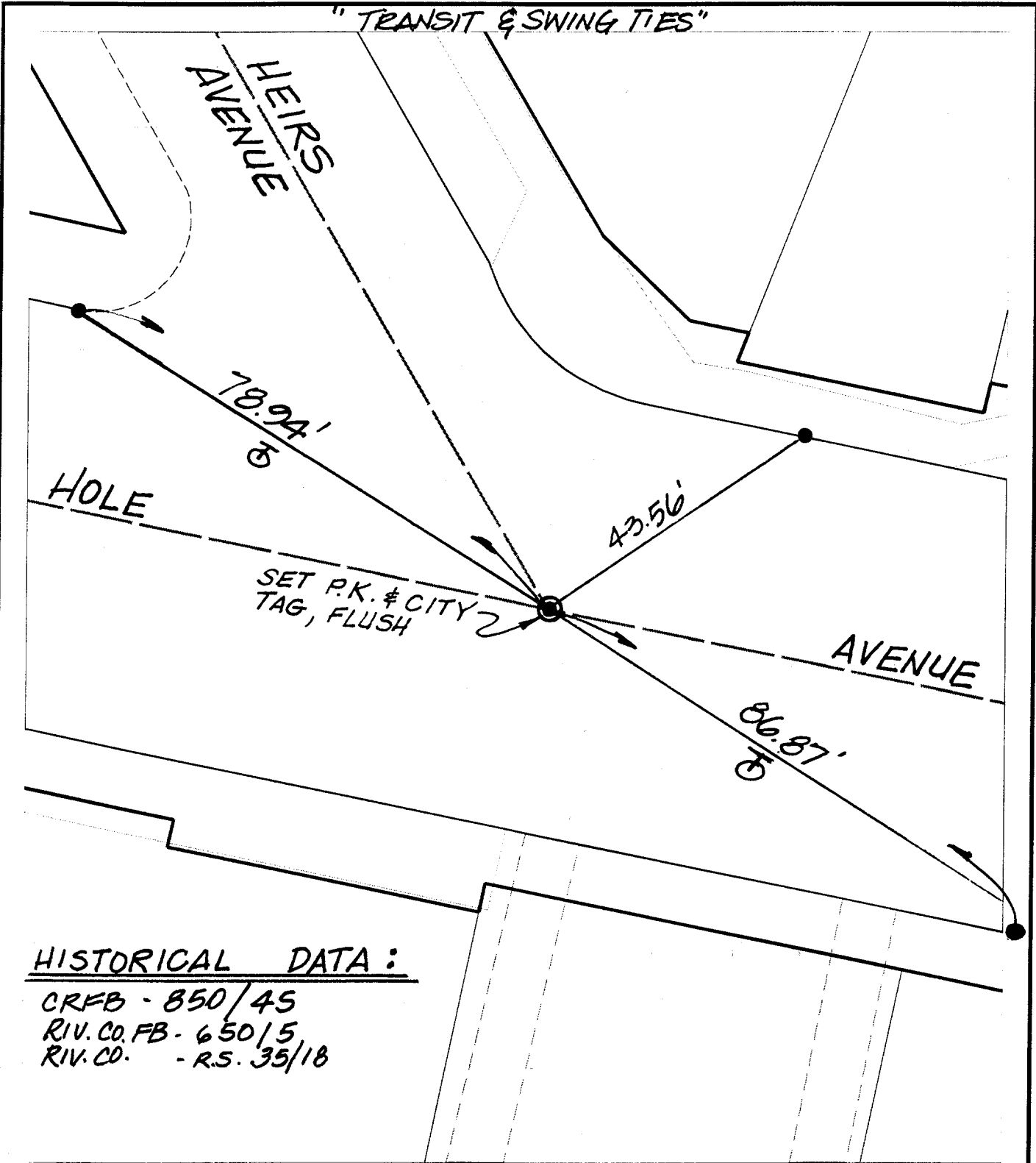
Street:

HOLE AVENUE

OFFICIAL USE ONLY

X-Street:

HEIRS AVENUE



HISTORICAL DATA :

CRFB - 850/45  
 RIV. CO. FB - 650/5  
 RIV. CO. - R.S. 35/18

- ✕ FD. Ramset Nail on T/C
- FD. "C" Nail on T/C

- FD. LD. & TK. on T/C
- Set LD. & TK. on T/C

Scale: 1" = 20'

Date: 12/29/99

Drawn by: scurtis

W.O.:

F.B.:

**OFFICIAL TIE PLAT**  
 CITY OF RIVERSIDE

*These ties are for the purpose of perpetuating the found monumentation. No claim is made as to the relationship of the points or lines shown hereon to true boundary locations.*



Sheet 1 of 1

File No.: