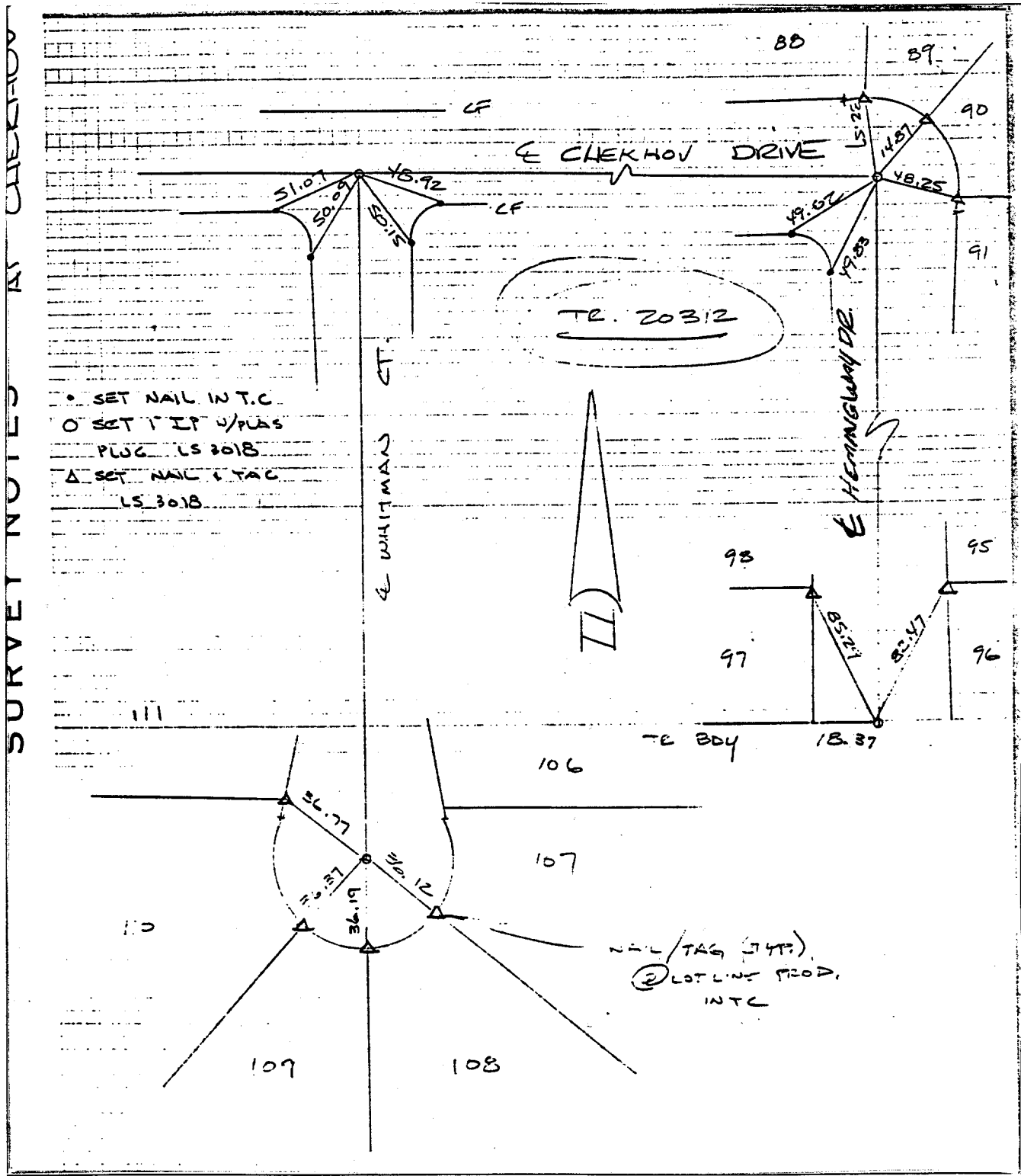


Street: HEMINGWAY DR.

OFFICIAL USE ONLY

X-Street: CHEKHOV DR.



- SET NAIL IN T/C
- SET 1" IP 4/PLAS
- PLUG LS 3018
- △ SET NAIL & TAG
- LS 3018

- × FD. Ramset Nail on T/C
- FD. LD. & TK. on T/C
- FD. "C" Nail on T/C
- Set LD. & TK. on T/C

Scale:
 Date:
 Drawn by:
 W.O.:
 F.B.: 9219/643

OFFICIAL TIE PLAT
 CITY OF RIVERSIDE

These ties are for the purpose of perpetuating the found monumentation. No claim is made as to the relationship of the points or lines shown hereon to true boundary locations.

TR 20312

Sheet 1 of 1

File No.: