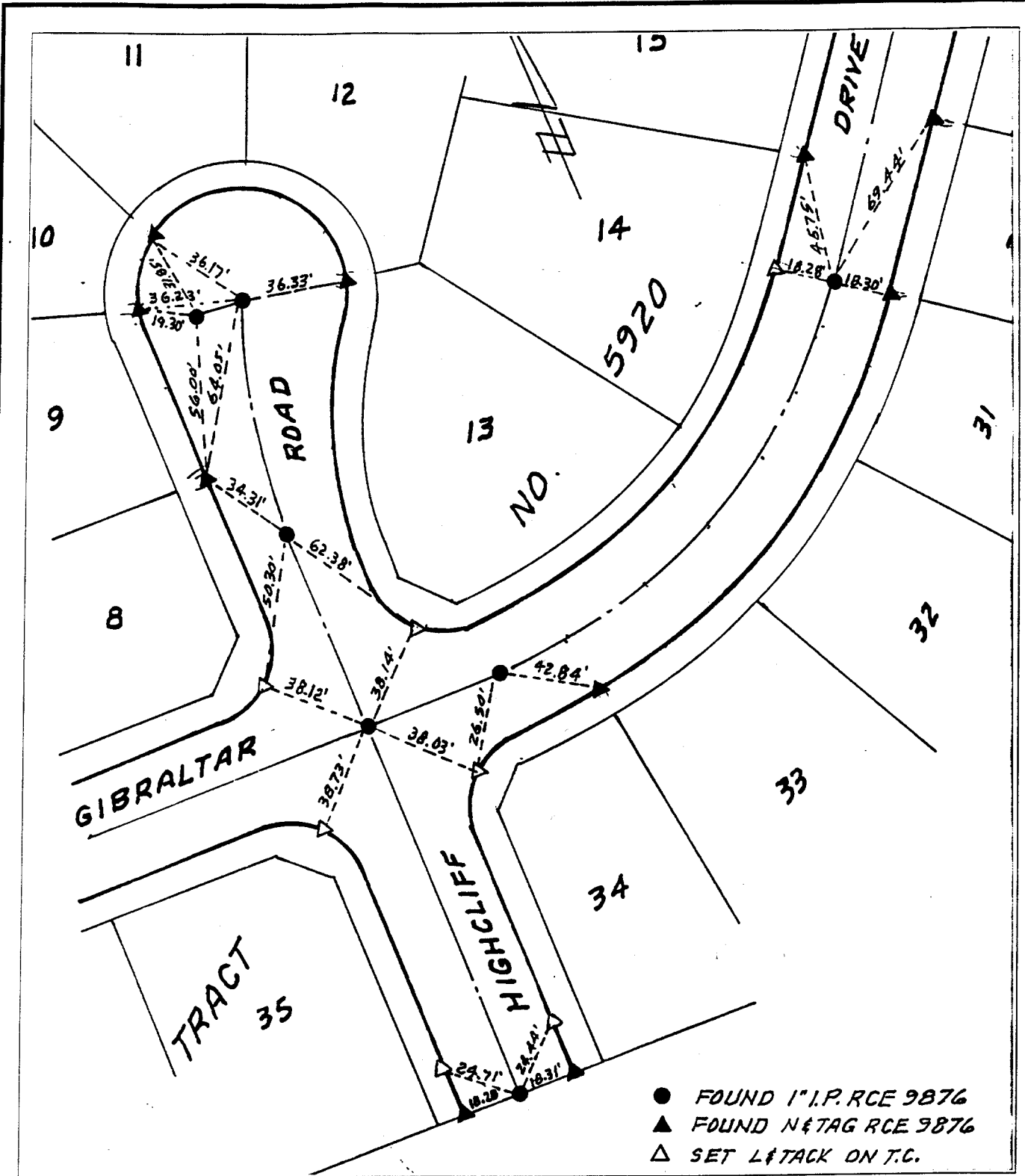


Street: Highcliff Rd. X-Street: S of Gibraltar Dr.
 OFFICIAL USE ONLY



- ✕ FD. Ramset Nail on T/C
- FD. "C" Nail on T/C

- FD. LD. & TK. on T/C
- Set LD. & TK. on T/C

- FOUND 1" I.P. RCE 9876
- ▲ FOUND N&TAG RCE 9876
- △ SET L&TACK ON T.C.

Scale: 1" = 50'
 Date: DEC. 1995
 Drawn by: BEL
 W.O.: 74-52
 F.B.: 1039

OFFICIAL TIE PLAT CITY OF RIVERSIDE

These ties are for the purpose of perpetuating the found monumentation. No claim is made as to the relationship of the points or lines shown hereon to true boundary locations.

Sheet 1 of 1
 File No.: