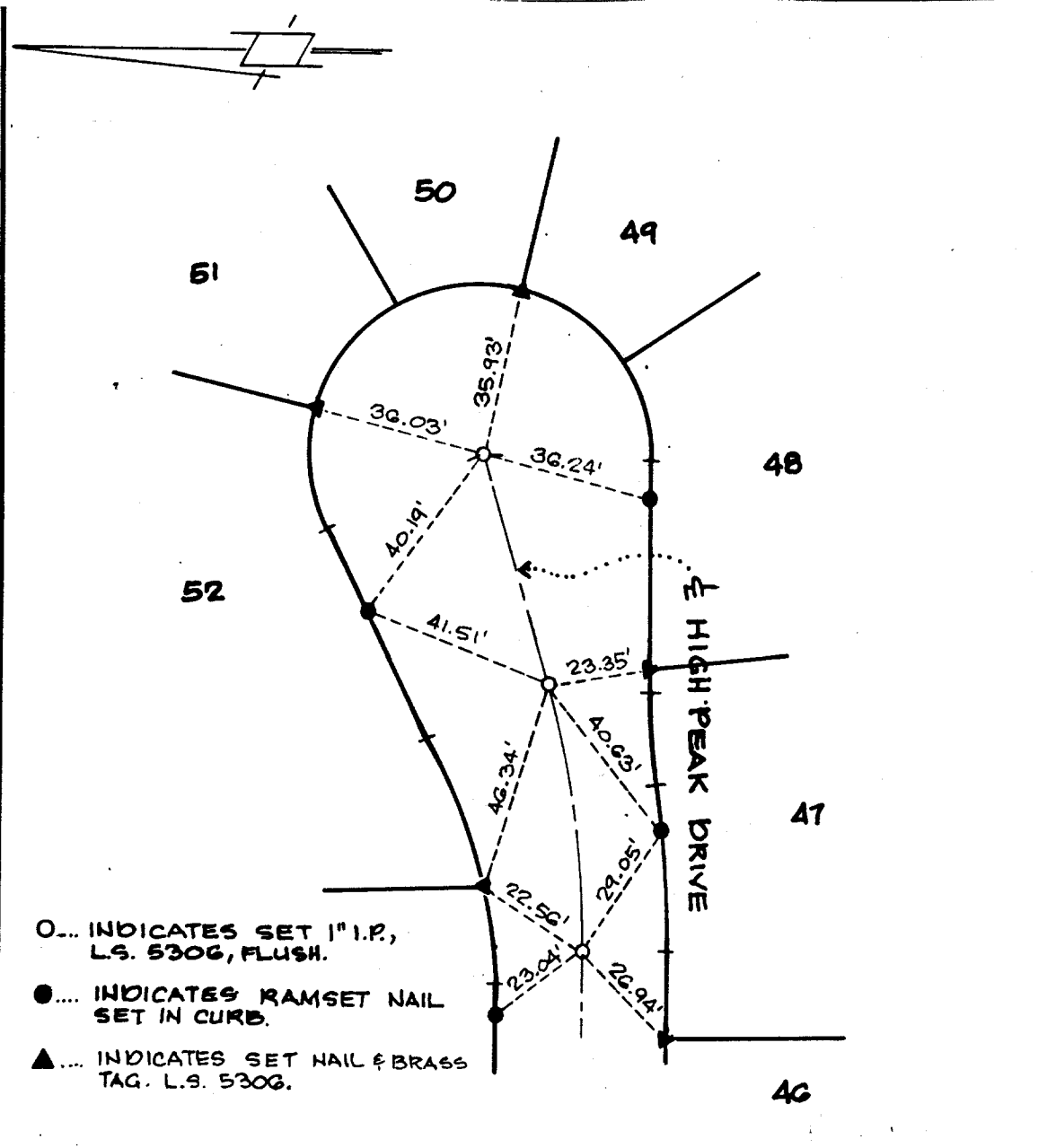



Street: HIGH PEAK DR

X-Street:
OFFICIAL USE ONLY

HIGH PEAK DR



- ... INDICATES SET 1" I.P., L.S. 5306, FLUSH.
- ... INDICATES RAMSET NAIL SET IN CURB.
- ▲... INDICATES SET NAIL & BRASS TAG. L.S. 5306.

TRACT NO. 21685	CITY OF RIVERSIDE, CALIFORNIA	SHEET
CENTERLINE TIES	 Southland Engineering	36
DATE: JUNE 1991	2200 Business Way, Ste. 100 Riverside, Ca. 92501 (714) 788-8488	OF 38

- ✕ FD. Ramset Nail on T/C
- FD. LD. & TK. on T/C
- FD. "C" Nail on T/C
- Set LD. & TK. on T/C

Scale:	OFFICIAL TIE PLAT	Sheet 36 of 38
Date:		
Drawn by:	<i>These ties are for the purpose of perpetuating the found monumentation. No claim is made as to the relationship of the points or lines shown hereon to true boundary locations.</i>	File No.:
W.O.:		
F.B.:		