

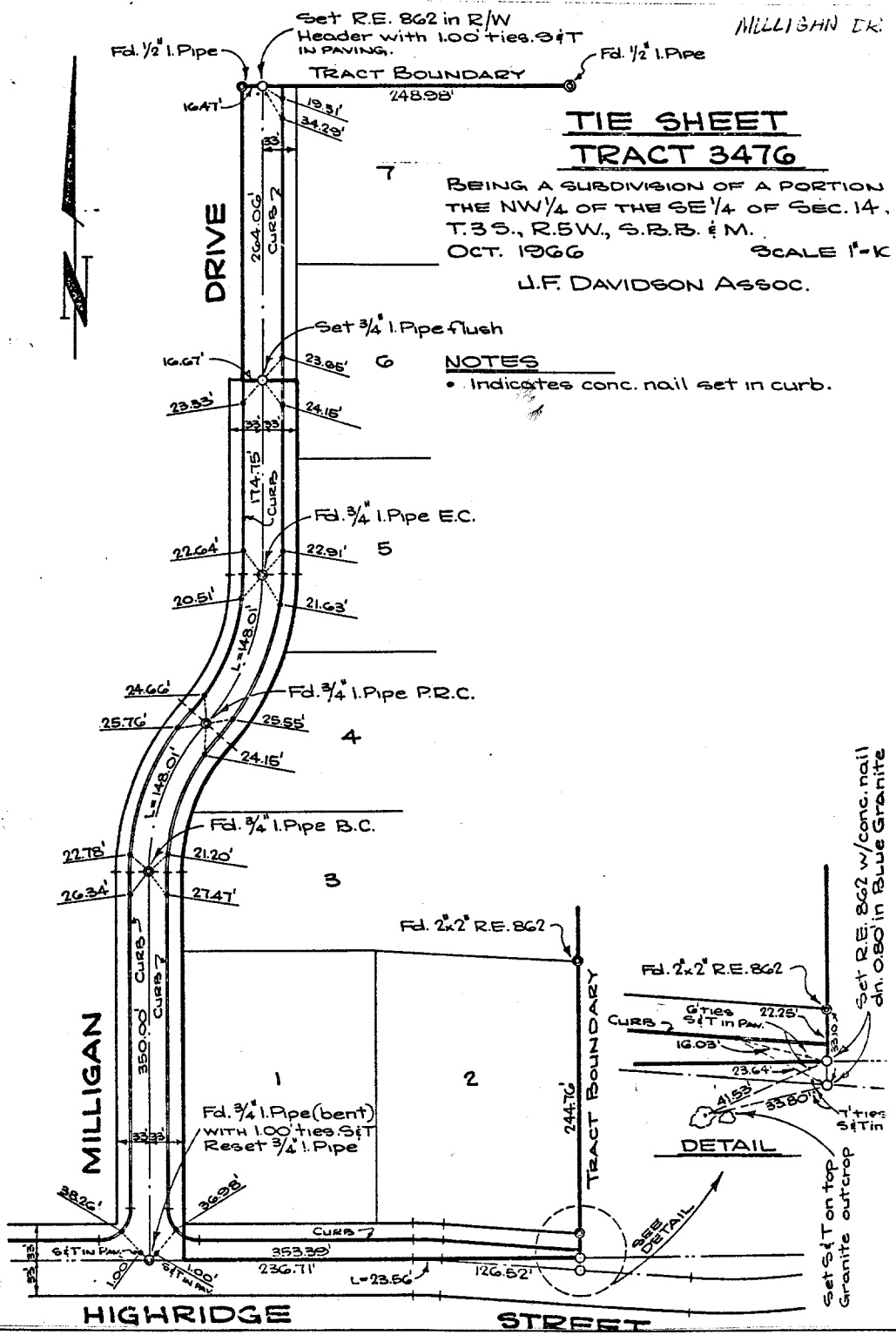
4143. TIF

Street: **HIGHRIDGE**

X-Street: **MILLIGAN DR**

OFFICIAL USE ONLY

HIGHRIDGE
-TIE SHT-
© Milligan Dr.



**TIE SHEET
TRACT 3476**

BEING A SUBDIVISION OF A PORTION
THE NW 1/4 OF THE SE 1/4 OF SEC. 14,
T.3 S., R.5 W., S.B.B. & M.
OCT. 1966 SCALE 1"=K
J.F. DAVIDSON ASSOC.

NOTES
• Indicates conc. nail set in curb.

- ✕ FD. Ramset Nail on T/C
- FD. LD. & TK. on T/C
- FD. "C" Nail on T/C
- Set LD. & TK. on T/C

**OFFICIAL TIE PLAT
CITY OF RIVERSIDE**

These ties are for the purpose of perpetuating the found monumentation. No claim is made as to the relationship of the points or lines shown hereon to true boundary locations.

Scale:
Date:
Drawn by:
W.O.:
F.B.: 966

Sheet 1 of 1
File No.: