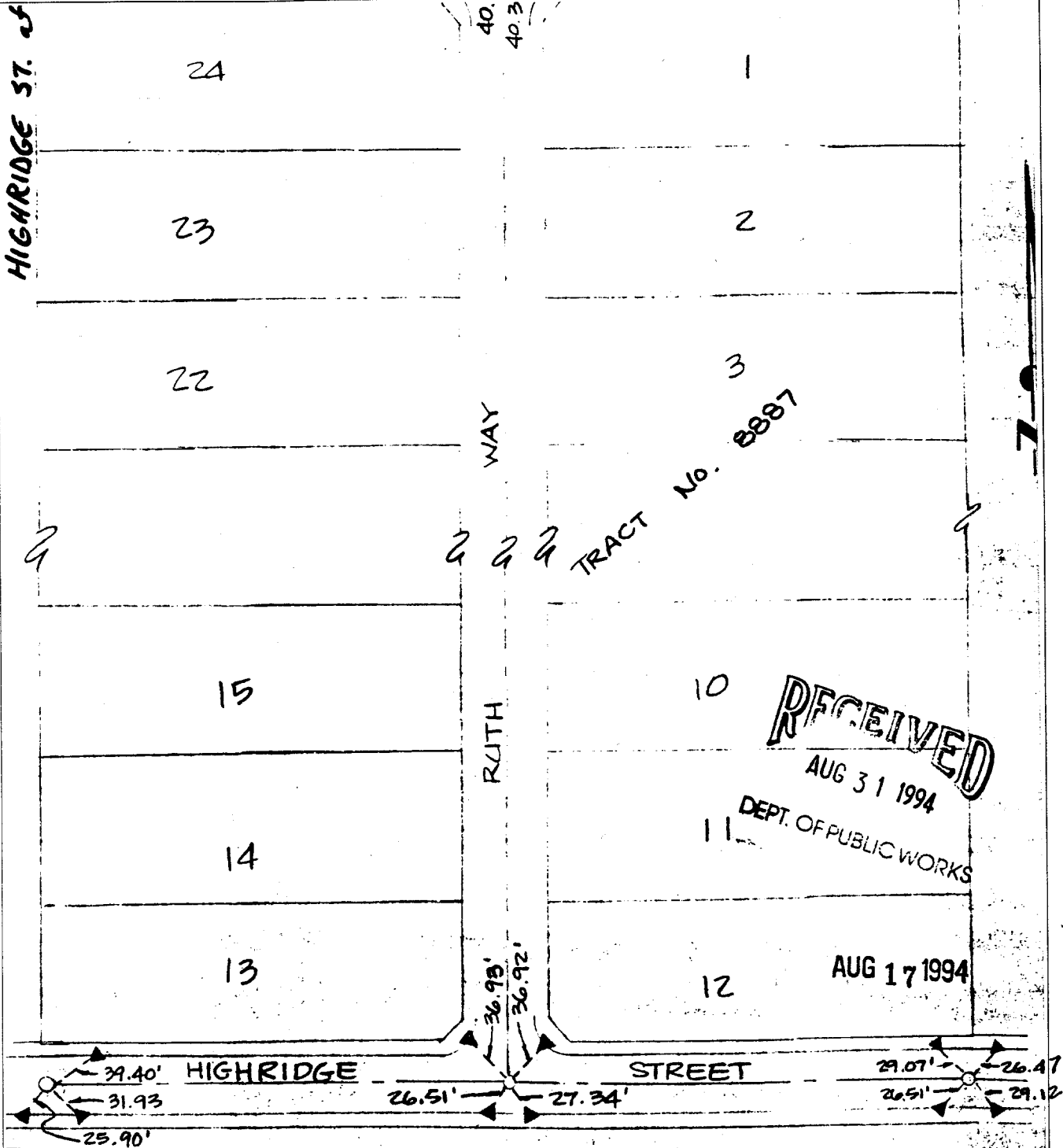


Street: HIGHRIDGE

OFFICIAL USE ONLY

X-Street: RUTH WAY + EAST + WEST OF



SCALE: 1" = 100'
ATF: AUG 1994

OFFICIAL TIE PLAT

SHEET

- ✕ FD. Ramset Nail on T/C
- FD. LD. & TK. on T/C
- FD. "C" Nail on T/C
- Set LD. & TK. on T/C

Scale: 1" = 100'
 Date: AUG. 1994
 Drawn by: DRZ
 W.O.: 92-38
 F.B.: 1034/95

OFFICIAL TIE PLAT

CITY OF RIVERSIDE

These ties are for the purpose of perpetuating the found monumentation. No claim is made as to the relationship of the points or lines shown hereon to true boundary locations.

Sheet 1 of 1
 File No.: