

SURVEYED BY Colclough - Pihulsky

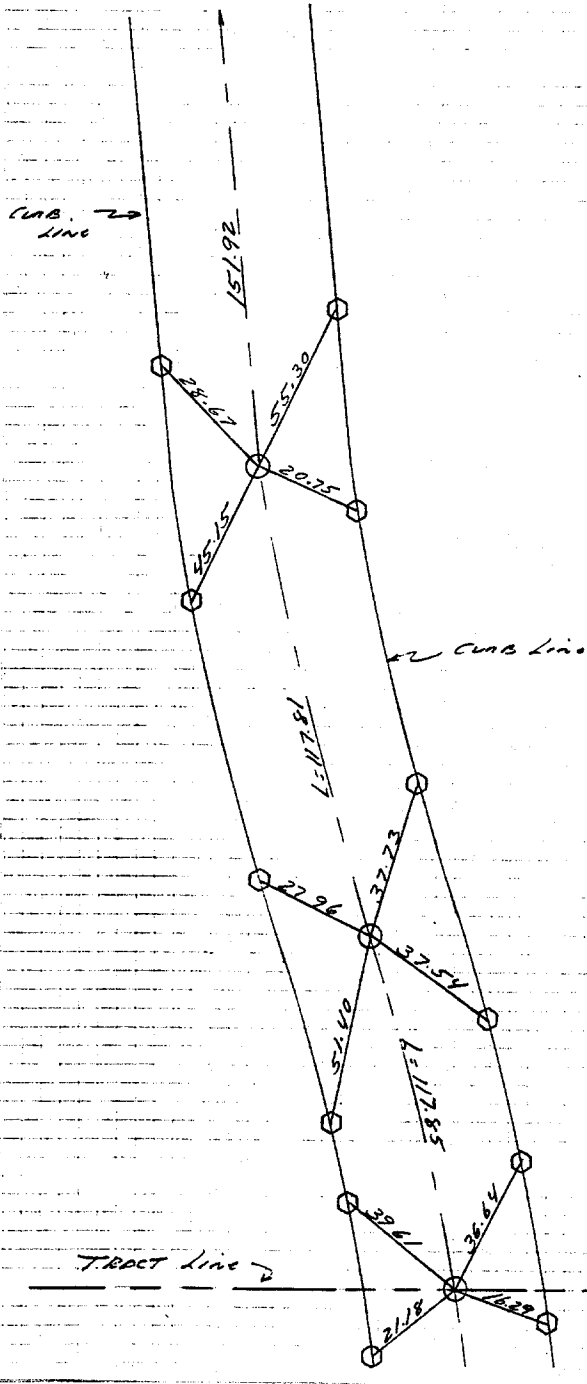
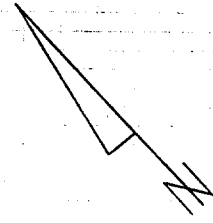
DATE 12-21-88

ORANGE COUNTY SURVEYOR

HILLCREST AVENUE

SEE SHEET #4

CURB LINE



- SET 1" I.P. 15 4/31 (Flush)
- SET 4" T ON T.C. NON-TANGENT OWN TIE

- × FD. Ramset Nail on T/C
- FD. LD. & TK. on T/C
- FD. "C" Nail on T/C
- Set LD. & TK. on T/C

Street: HILLCREST AVE

X-Street: \_\_\_\_\_  
OFFICIAL USE ONLY

Scale: \_\_\_\_\_  
Date: \_\_\_\_\_  
Drawn by: \_\_\_\_\_  
W.O.: \_\_\_\_\_  
F.B.: \_\_\_\_\_

**OFFICIAL TIE PLAT**  
CITY OF RIVERSIDE

*These ties are for the purpose of perpetuating the found monumentation. No claim is made as to the relationship of the points or lines shown hereon to true boundary locations.*

TRACT 21754

Sheet **5** of **5**  
File No.: \_\_\_\_\_