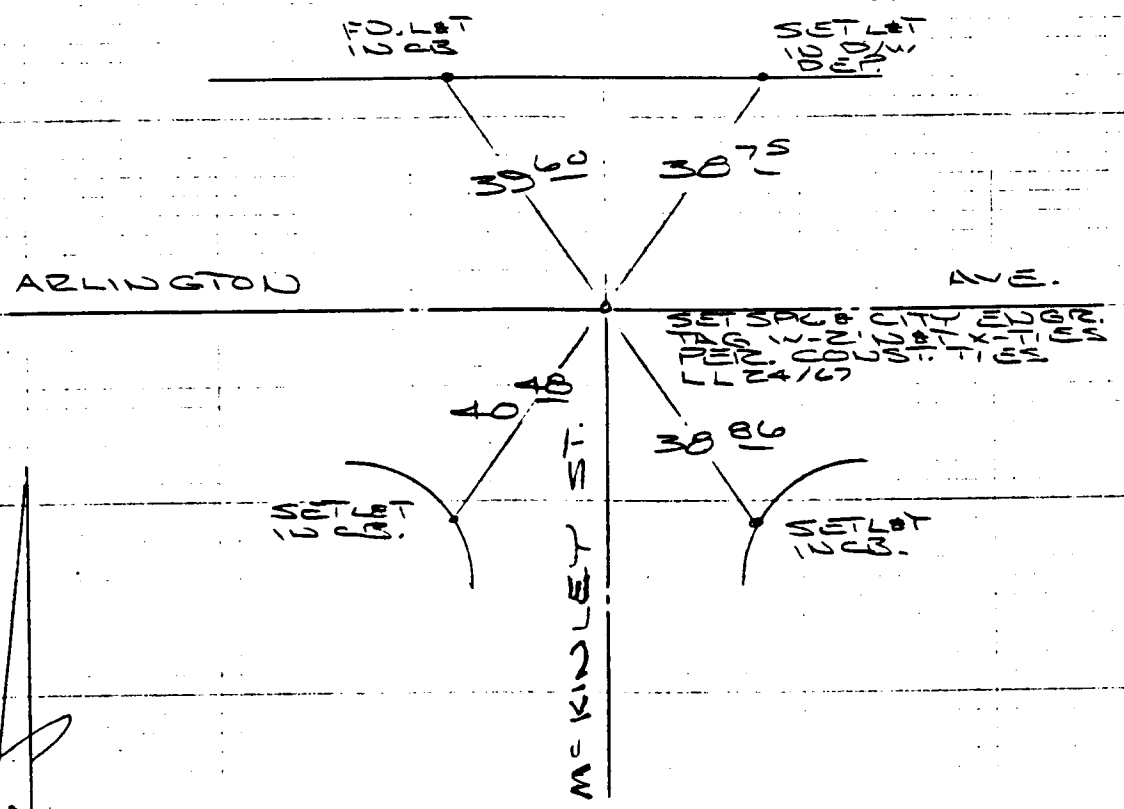


418.71E

ARLINGTON AVE INDEX LL38 PAGE 79
BY GARCIA-STEPHENS-LOPEZ-FAUO DATE JAN. 18, 1989

HISTORICAL DATA
LL24/67
CRCS 93/45

TRANSIT TIES



- ✕ FD. Ramset Nail on T/C
- FD. LD. & TK. on T/C
- FD. "C" Nail on T/C
- Set LD. & TK. on T/C

Street: ARLINGTON AVE
OFFICIAL USE ONLY
X-Street: MCKINDLEY ST. # 41

Scale: _____
 Date: _____
 Drawn by: _____
 W.O.: _____
 F.B.: _____

OFFICIAL TIE PLAT
CITY OF RIVERSIDE

These ties are for the purpose of perpetuating the found monumentation. No claim is made as to the relationship of the points or lines shown hereon to true boundary locations.

Sheet 1 of 1
 File No.: _____