

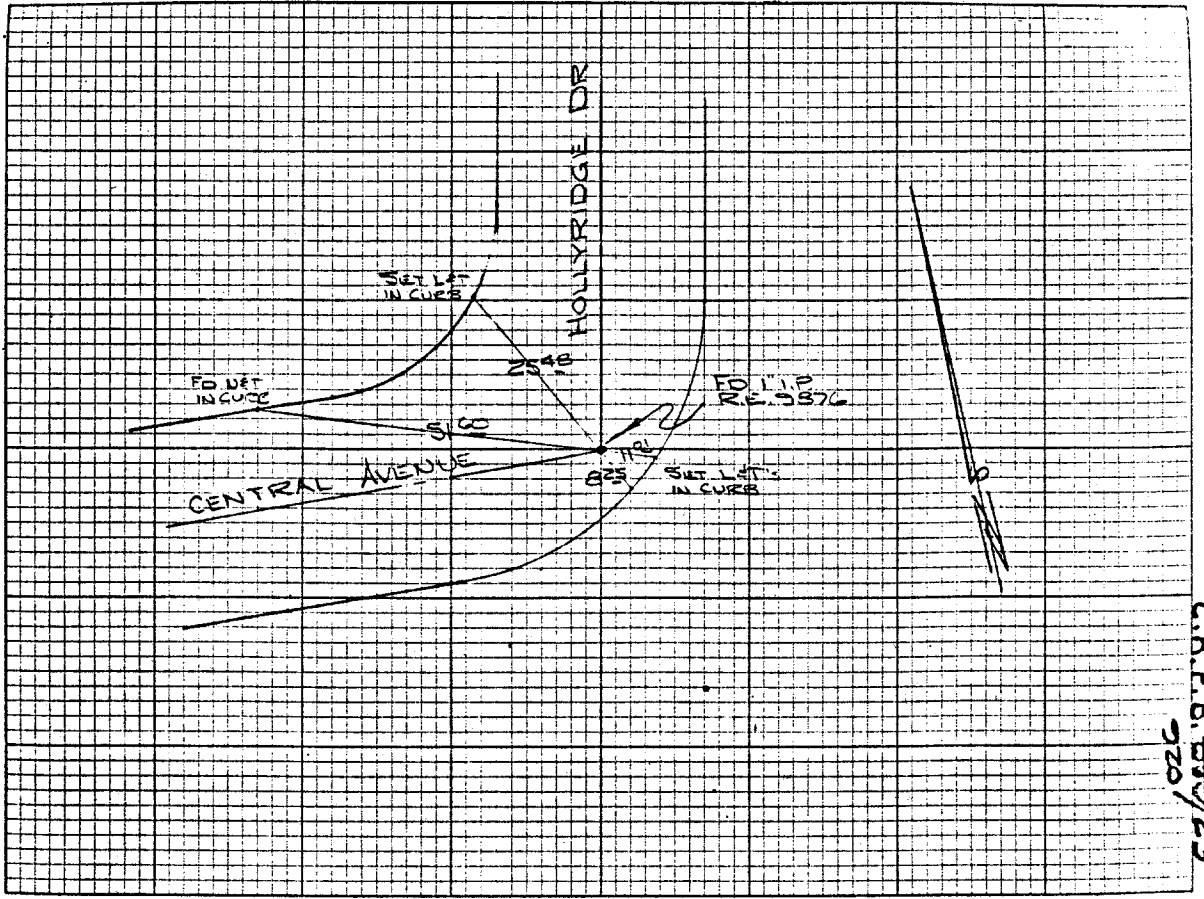
Street: HOLLYRIDGE DR.

X-Street: \_\_\_\_\_

CENTRAL

OFFICIAL USE ONLY

HISTORICAL DATA		TRANSIT TIES		CREW: STEELE JORDAN	
				6-2-69	
				FB 920/63	



C.R.F.B. 859/23  
920

- ✕ FD. Ramset Nail on T/C
- FD. LD. & TK. on T/C
- FD. "C" Nail on T/C
- Set LD. & TK. on T/C

Scale: \_\_\_\_\_  
 Date: \_\_\_\_\_  
 Drawn by: \_\_\_\_\_  
 W.O.: \_\_\_\_\_  
 F.B.: 920/23

**OFFICIAL TIE PLAT**  
**CITY OF RIVERSIDE**

*These ties are for the purpose of perpetuating the found monumentation. No claim is made as to the relationship of the points or lines shown hereon to true boundary locations.*

Sheet 1 of 1  
 File No.: \_\_\_\_\_