

Street: **HOLLY RIDGE**

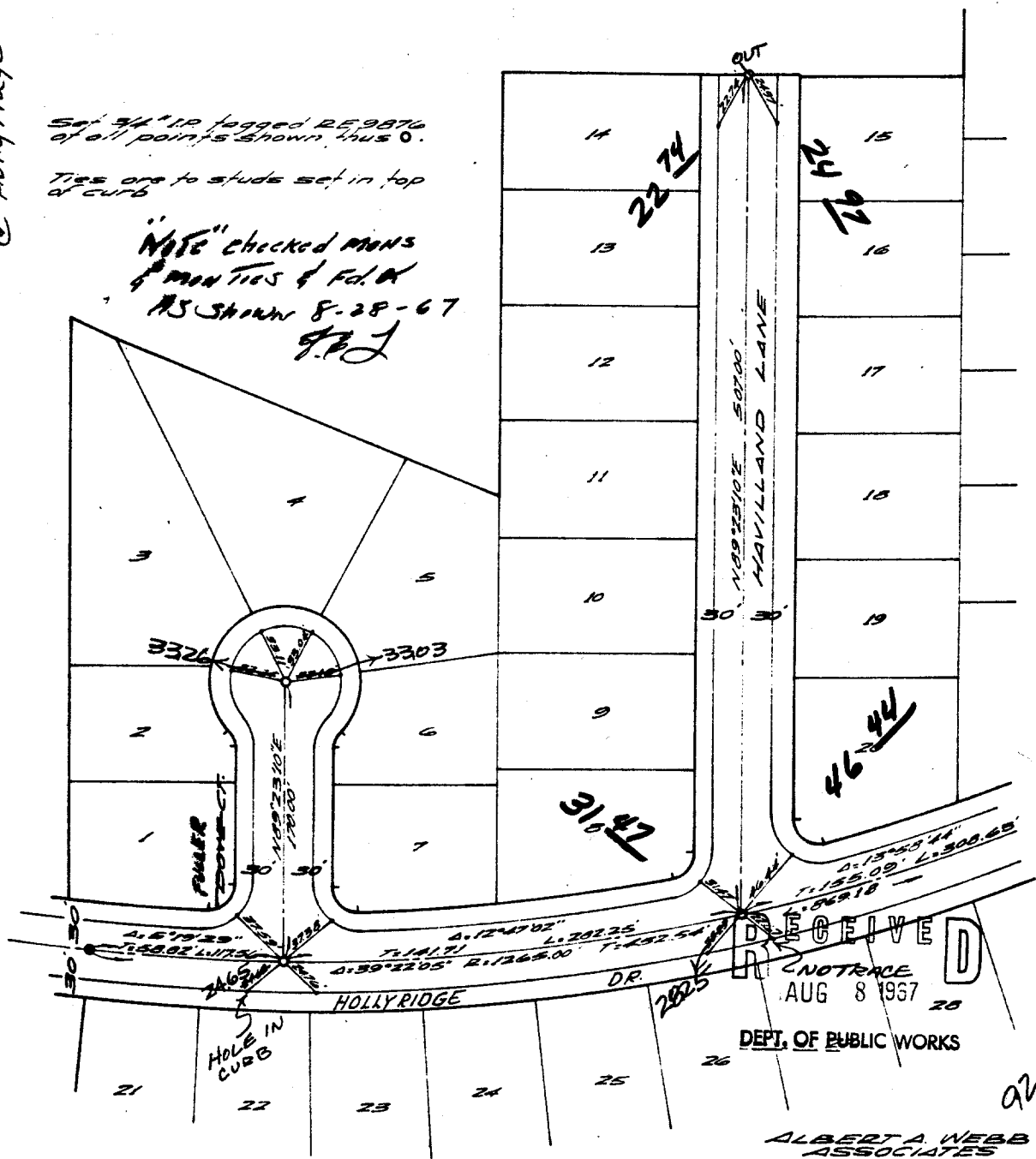
OFFICIAL USE ONLY

X-Street: **HAVILLAND LANE**

Set 5/4" IR tagged RE9876  
of all points shown, plus 0.  
Ties are to studs set in top  
of curb

"NOTE" checked MONS  
& MAN TIES & Fd. of  
AS shown 8-28-67  
J.P.J.

77E SMT. -  
© Holly ridge



Drawn By: RM  
Date: 5-4-67

CHECKED  
5-29-69  
JWSJR.

ALBERT A. WEBB  
ASSOCIATES

FB 559, P. 69  
NO. 64-175

SHEET 1 of 2

- ✕ FD. Ramset Nail on T/C
- FD. "C" Nail on T/C

- FD. LD. & TK. on T/C
- Set LD. & TK. on T/C

Scale: \_\_\_\_\_  
Date: \_\_\_\_\_  
Drawn by: \_\_\_\_\_  
W.O.: \_\_\_\_\_  
F.B.: \_\_\_\_\_

## OFFICIAL TIE PLAT

### CITY OF RIVERSIDE

These ties are for the purpose of perpetuating the found  
monumentation. No claim is made as to the relationship of  
the points or lines shown hereon to true boundary locations.

Sheet 1 of 1  
File No.: \_\_\_\_\_