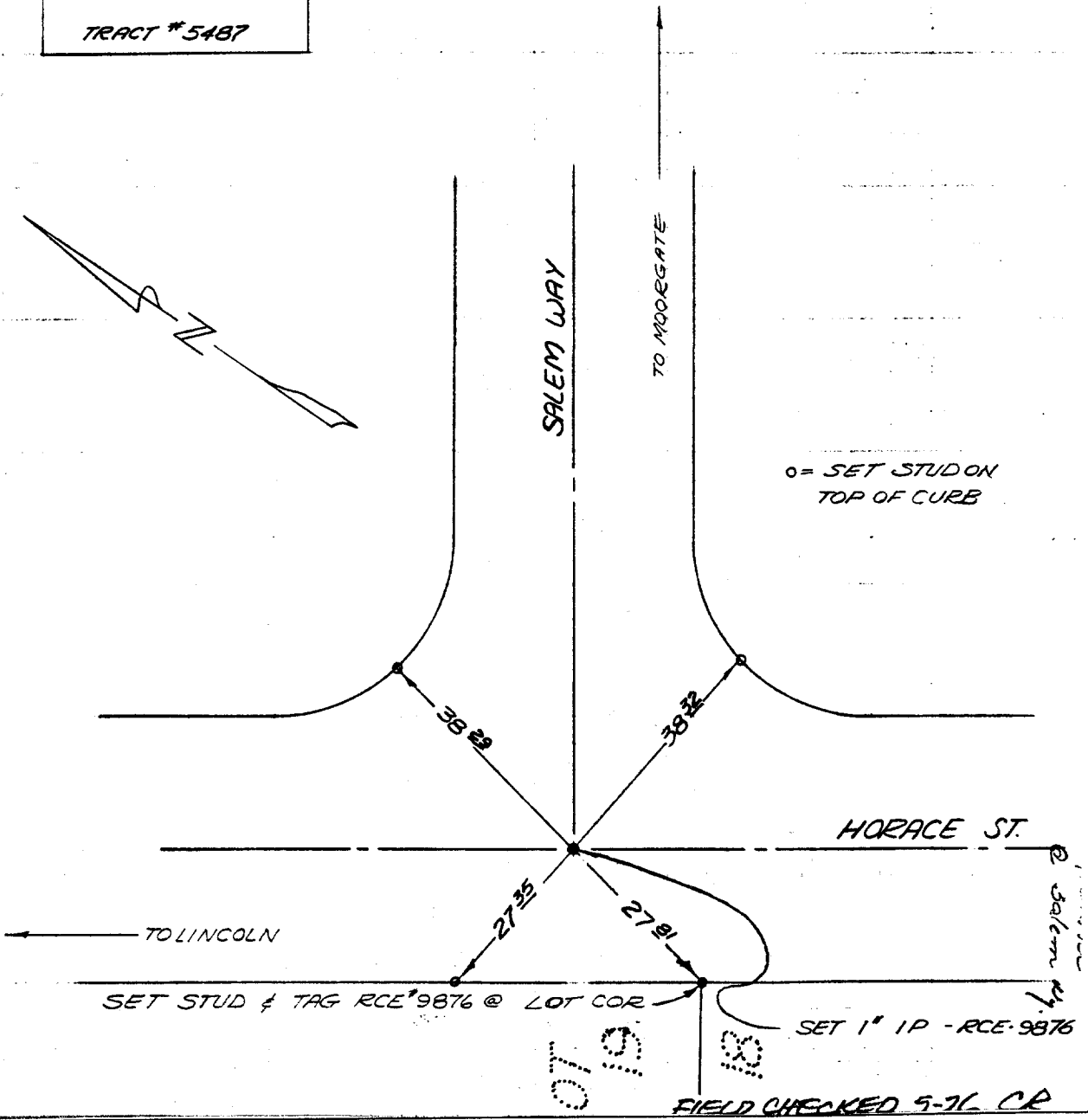


HISTORICAL DATA
A.WEBB FB 1032/184

TRANSIT TIES

SALEM WAY

TRACT # 5487



Street: HORACE ST.
X-Street: SALEM WAY
OFFICIAL USE ONLY

- × FD. Ramset Nail on T/C
- FD. LD. & TK. on T/C
- FD. "C" Nail on T/C
- Set LD. & TK. on T/C

Scale:
Date:
Drawn by:
W.O.:
F.B.:

OFFICIAL TIE PLAT
CITY OF RIVERSIDE

These ties are for the purpose of perpetuating the found monumentation. No claim is made as to the relationship of the points or lines shown hereon to true boundary locations.

Sheet 1 of 1
File No.: