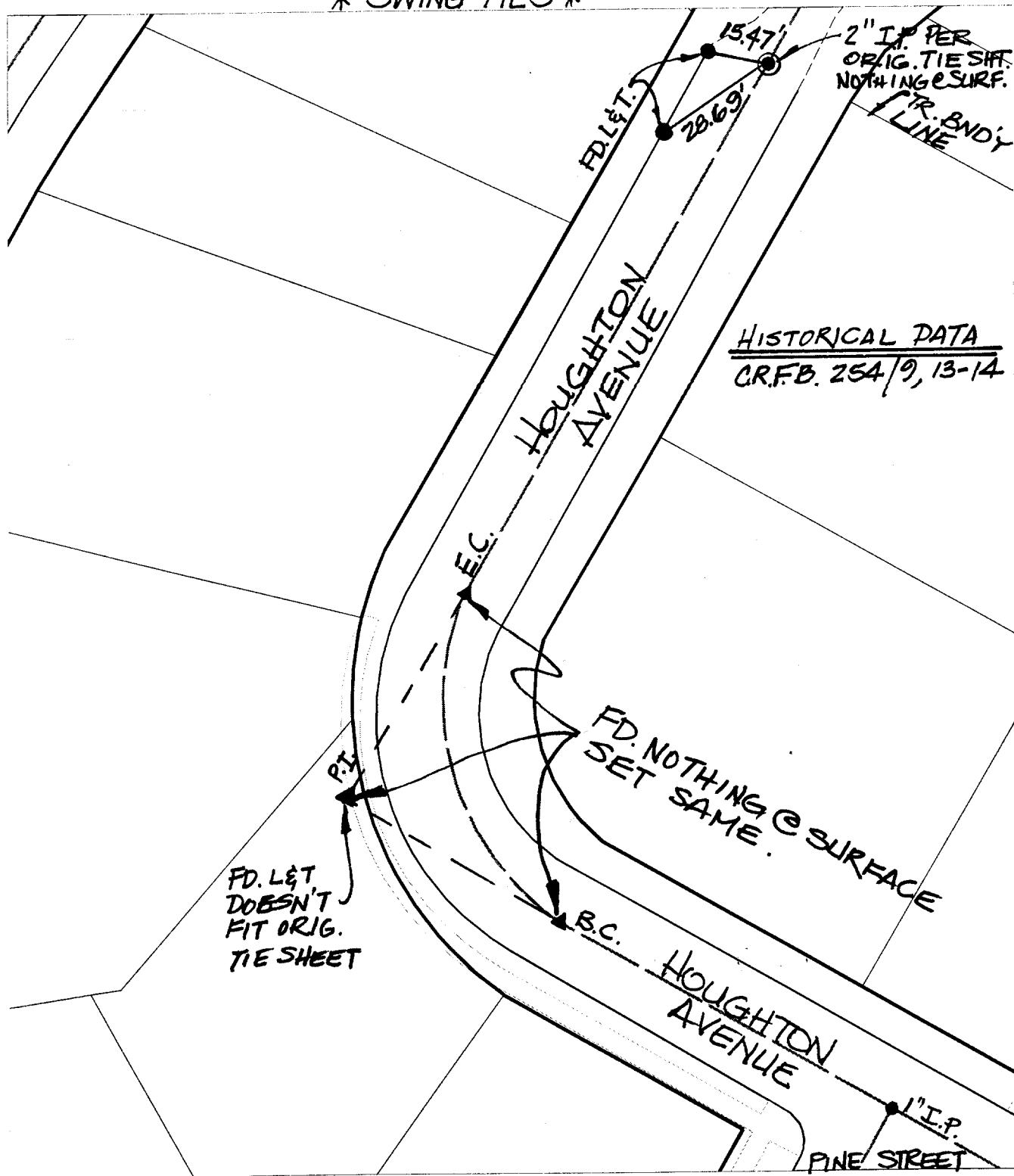


\* SWING TIES \*



Street: HOUGHTON AVENUE X-Street: TR. BNDY, PI, BC~EC, M&N. OF PINE ST.

Scale: ~~1"=20'~~ N.T.S.  
 Date: 12/22/99  
 Drawn by: KGE  
 W.O.:  
 F.B.:

**OFFICIAL TIE PLAT**  
 CITY OF RIVERSIDE

*These ties are for the purpose of perpetuating the found monumentation. No claim is made as to the relationship of the points or lines shown hereon to true boundary locations.*

Sheet 1 of 1  
 File No.: