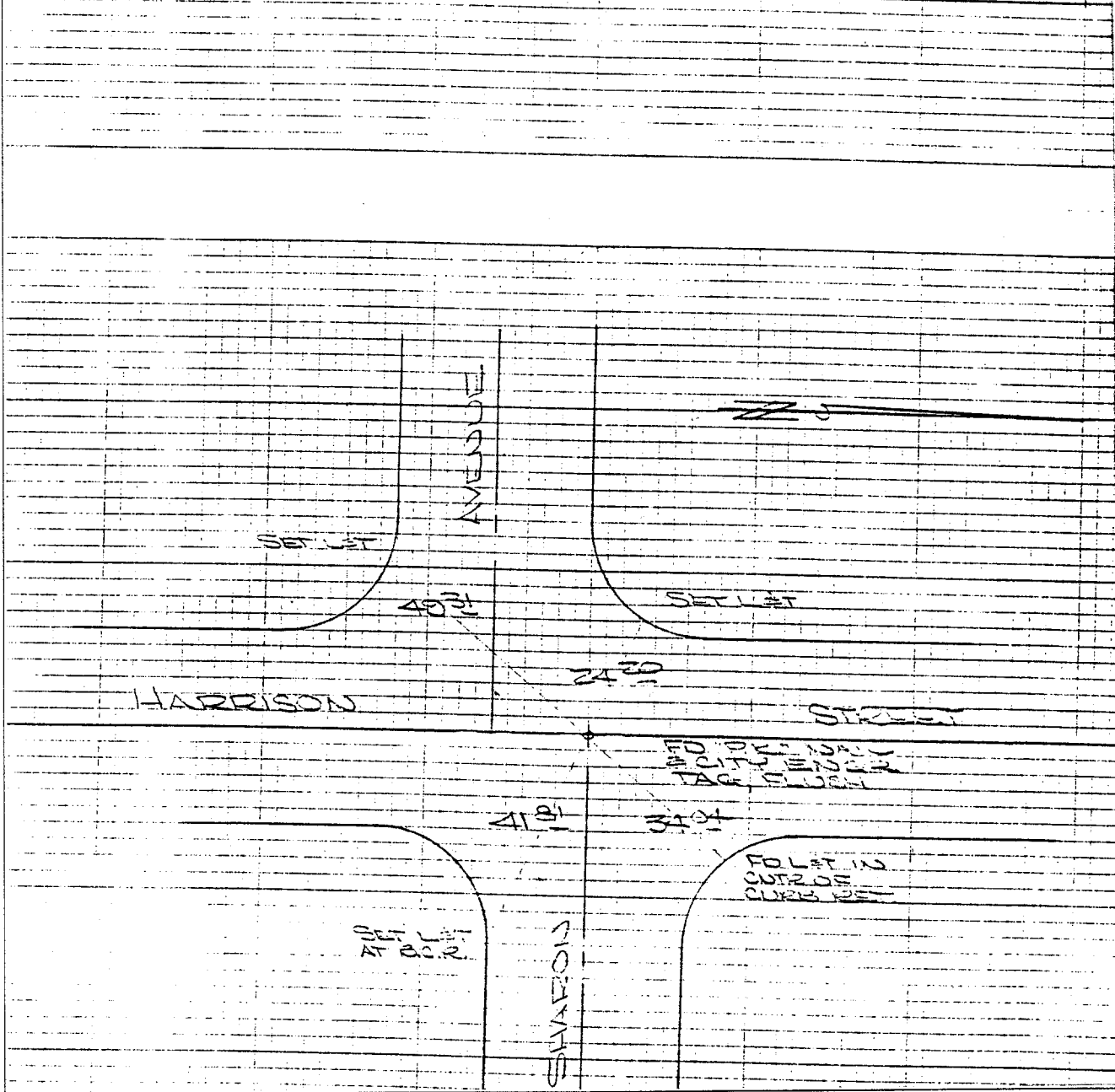


Street: Harrison St  
 X-Street: Sharon St. Ely

OFFICIAL USE ONLY

EB 514/43, 72-57	CRFB 974/35	STEEL
		EWING
		ALLEN
		MAY 23, 1974
		EB 974/35



- ✕ FD. Ramset Nail on T/C
- FD. LD. & TK. on T/C
- FD. "C" Nail on T/C
- Set LD. & TK. on T/C

Scale:  
 Date:  
 Drawn by:  
 W.O.:  
 F.B.:

## OFFICIAL TIE PLAT

### CITY OF RIVERSIDE

*These ties are for the purpose of perpetuating the found monumentation. No claim is made as to the relationship of the points or lines shown hereon to true boundary locations.*

Sheet 1 of 1  
 File No.: