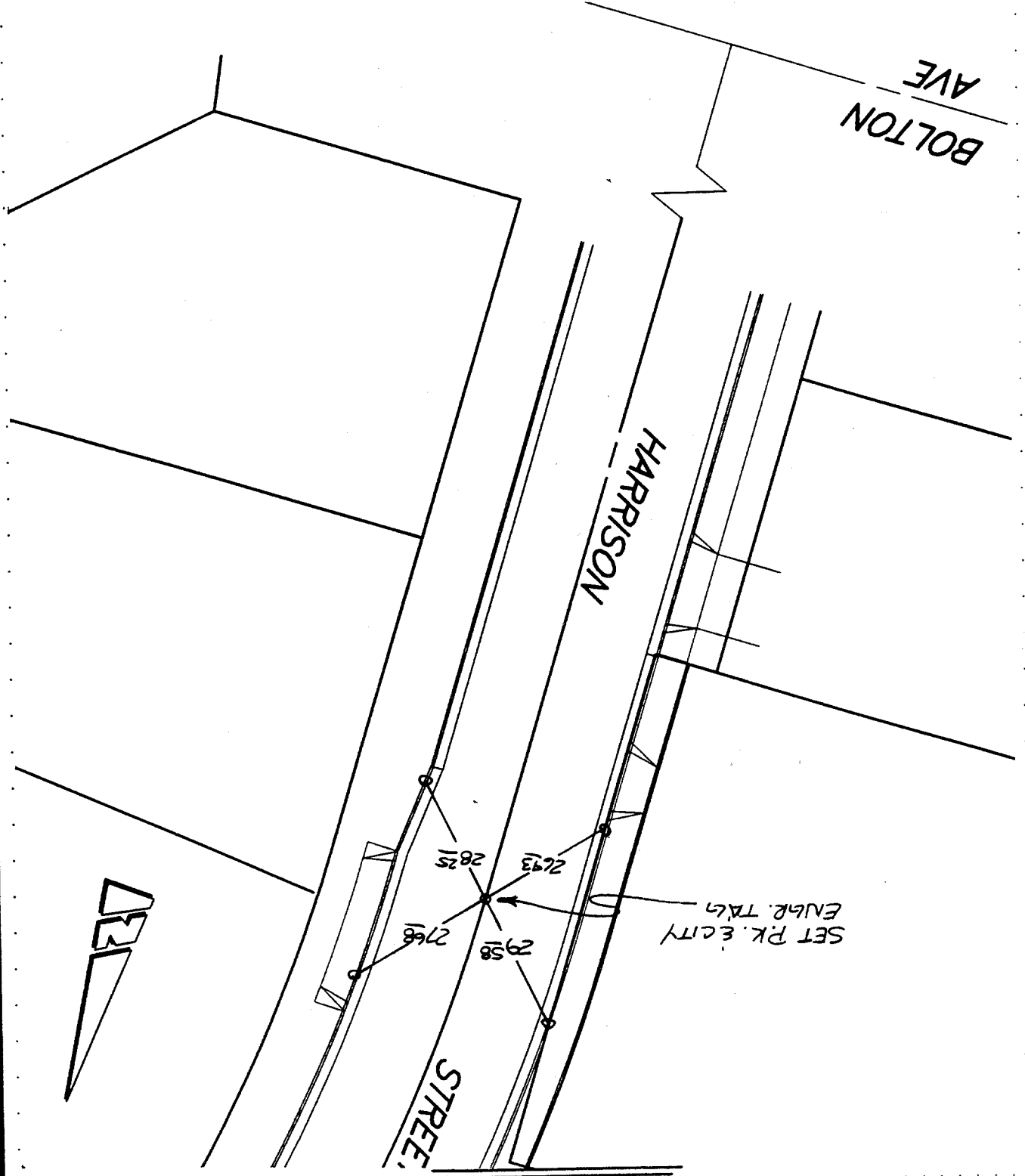


FILE NO.:
OF 2 SHEETS
SHEET 2

OFFICIAL TIE PLAT
CITY OF RIVERSIDE
These ties are for the purpose of perpetuating the found
monumentation. No claim is made as to the relationship of
the points or lines shown hereon to true boundary locations.

SCALE: A.T.S.
DATE: 4-7-97
DR. BY: FINNEY, J.
W.O.:
F.B.:

- FD. LD. & TK. on T/C
- SET LD. & TK. On T/C
- FD. "C" Nail on T/C
- × FD. Ramset Nail on T/C



STREET HARRISON ST
BOLTON AVE
OFFICE USE ONLY
X-STREET ALLY OF BOLTON AVE