

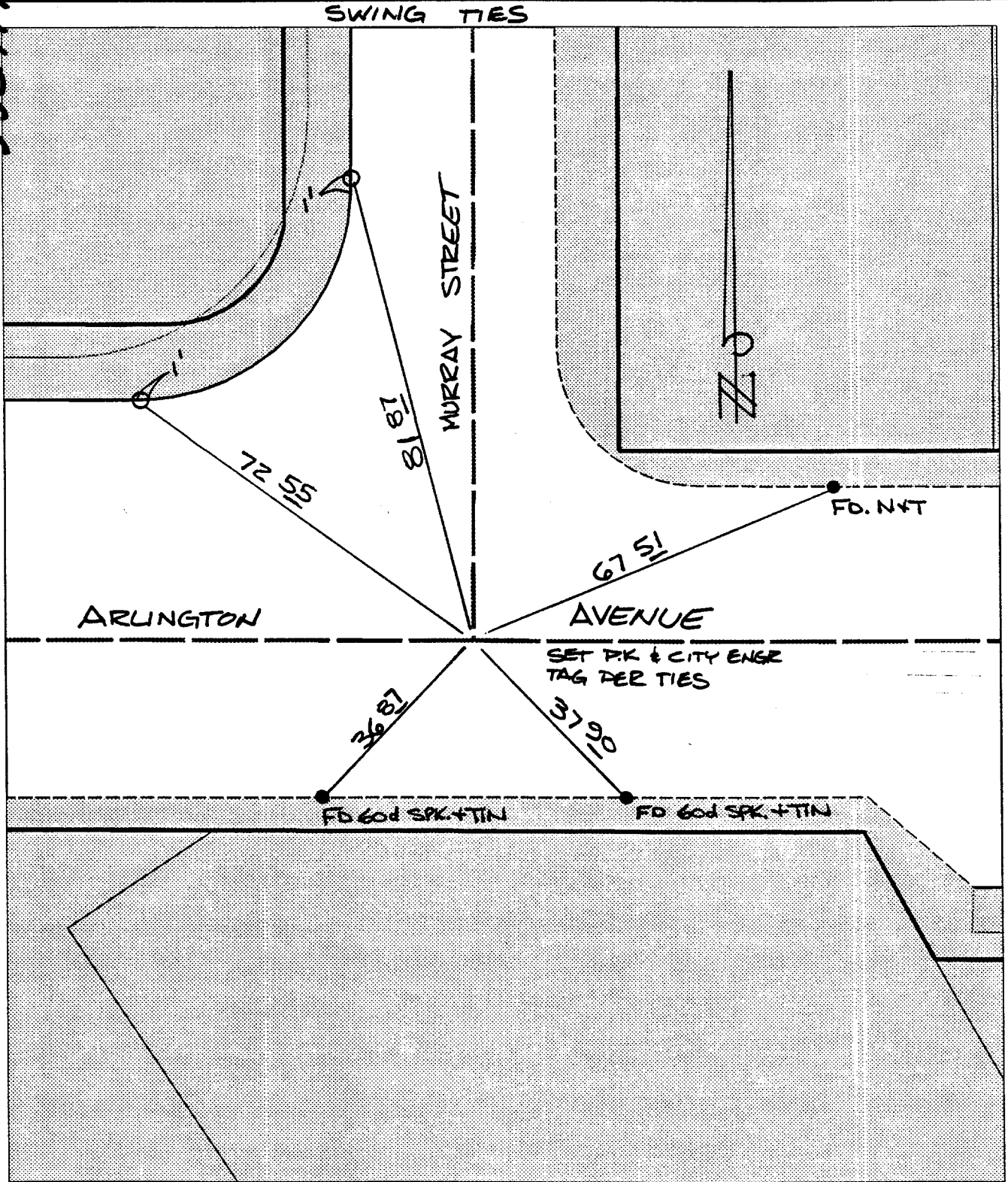
MURRAY STREET

X-Street:
OFFICIAL USE ONLY

ARLINGTON AVE

Street:

330.77 F



- ✕ FD. Ramset Nail on T/C
- FD. "C" Nail on T/C

- FD. LD. & TK. on T/C
- Set LD. & TK. on T/C

Scale: 1" = 25'

Date: 09/17/97

Drawn by: scurtis

W.O.:

FP:

OFFICIAL TIE PLAT

CITY OF RIVERSIDE

These ties are for the purpose of perpetuating the found monumentation. No claim is made as to the relationship of the monumentation to the adjacent property.



Sheet 1 of 1

File No: