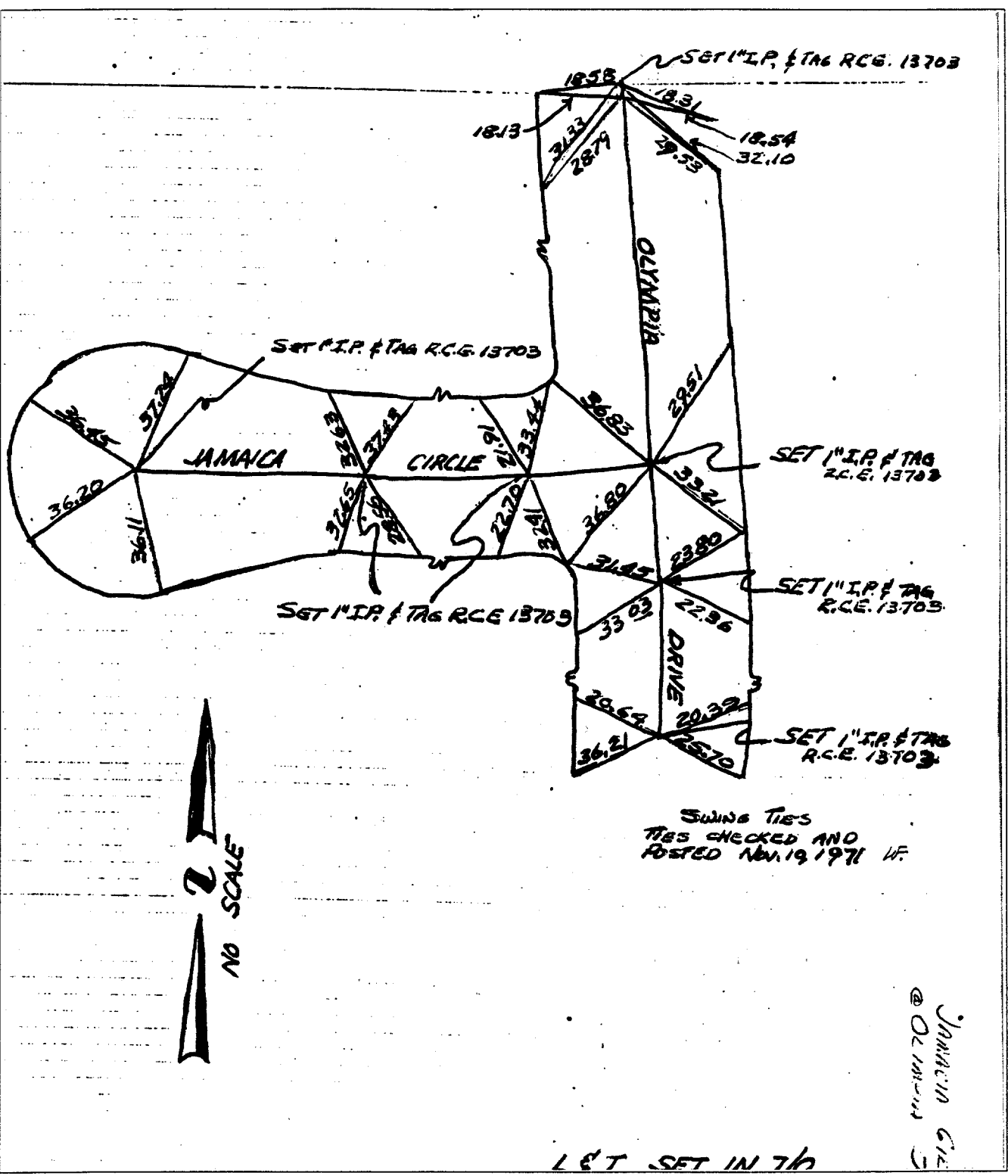


Street: JAMAICA Circle X-Street: OLYMPIA Dr.

OFFICIAL USE ONLY



Swing Ties
TIES CHECKED AND
POSTED Nov. 19, 1971 W.F.

JAMAICA CIRCLE
@ Olympia Dr.

LET SET IN 7/6

- ✕ FD. Ramset Nail on T/C
- FD. LD. & TK. on T/C
- FD. "C" Nail on T/C
- Set LD. & TK. on T/C

Scale:
Date:
Drawn by:
W.O.:
F.B.:

OFFICIAL TIE PLAT
CITY OF RIVERSIDE

These ties are for the purpose of perpetuating the found monumentation. No claim is made as to the relationship of the points or lines shown hereon to true boundary locations.

Sheet 1 of 1
File No.: