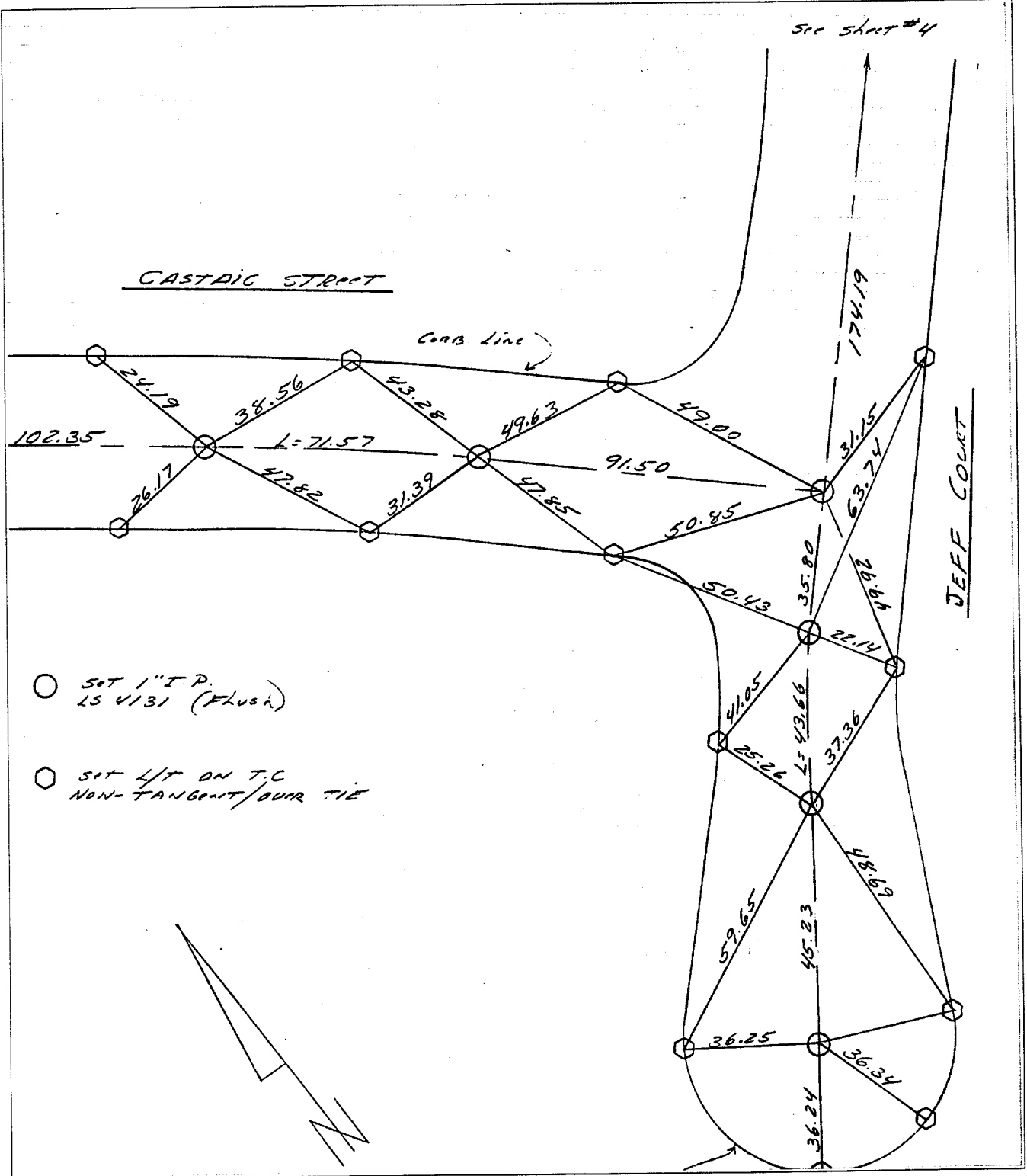


4324.TIF

Street: JEFF CT.

OFFICIAL USE ONLY

X-Street: @ Castaic St.



- Set 1" I.P. 15 4/31 (Flush)
- Set 1/4" ON T.C. NON-TANGENT/OVER TIE

- ✕ FD. Ramset Nail on T/C
- FD. LD. & TK. on T/C
- FD. "C" Nail on T/C
- Set LD. & TK. on T/C

Scale:  
Date:  
Drawn by:  
W.O.:  
F.B.:

**OFFICIAL TIE PLAT**  
**CITY OF RIVERSIDE**

*These ties are for the purpose of perpetuating the found monumentation. No claim is made as to the relationship of the points or lines shown hereon to true boundary locations.*

Sheet 1 of 1  
File No.: