

4329.TIF

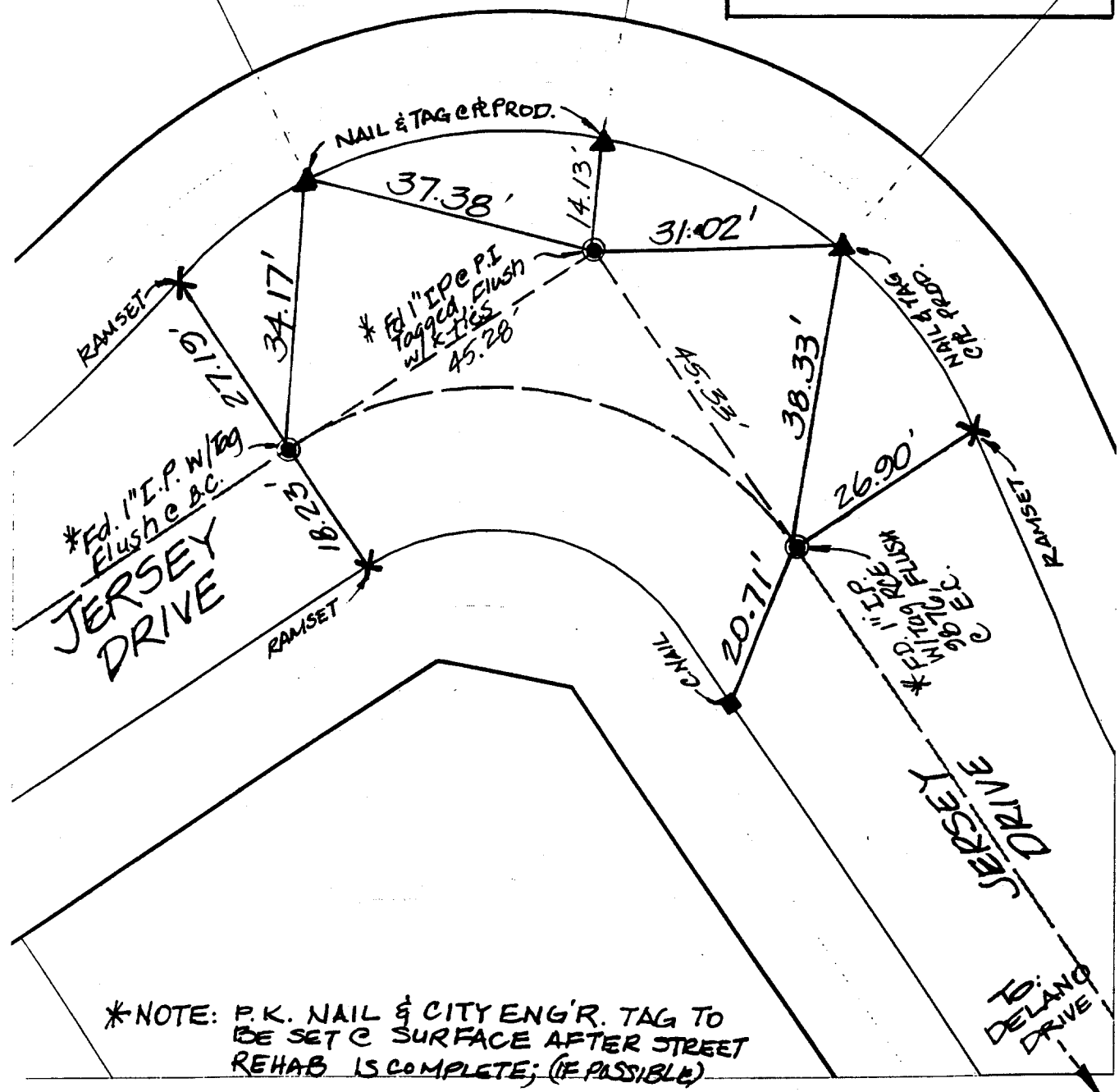
SWING TIES

HISTORICAL DATA:
 A.A. Webb FB. 1038/1169,
 TR# 5061, MB 86/66-68

Street:

JERSEY DR

X-St. KNUCKLE N'LY OF DELANO
 OFFICIAL USE ONLY



*NOTE: P.K. NAIL & CITY ENG'R. TAG TO BE SET @ SURFACE AFTER STREET REHAB IS COMPLETE; (IF POSSIBLE)

- ✕ FD. Ramset Nail on T/C
- FD. LD. & TK. on T/C
- FD. "C" Nail on T/C
- Set LD. & TK. on T/C

Scale: 1" = 20'
 Date: 11/23/99
 Drawn by: scurtis
 W.O.:
 F.B.:

OFFICIAL TIE PLAT
 CITY OF RIVERSIDE



These ties are for the purpose of perpetuating the found monumentation. No claim is made as to the relationship of the points or lines shown hereon to true boundary locations.

Sheet 1 of 1
 File No.: