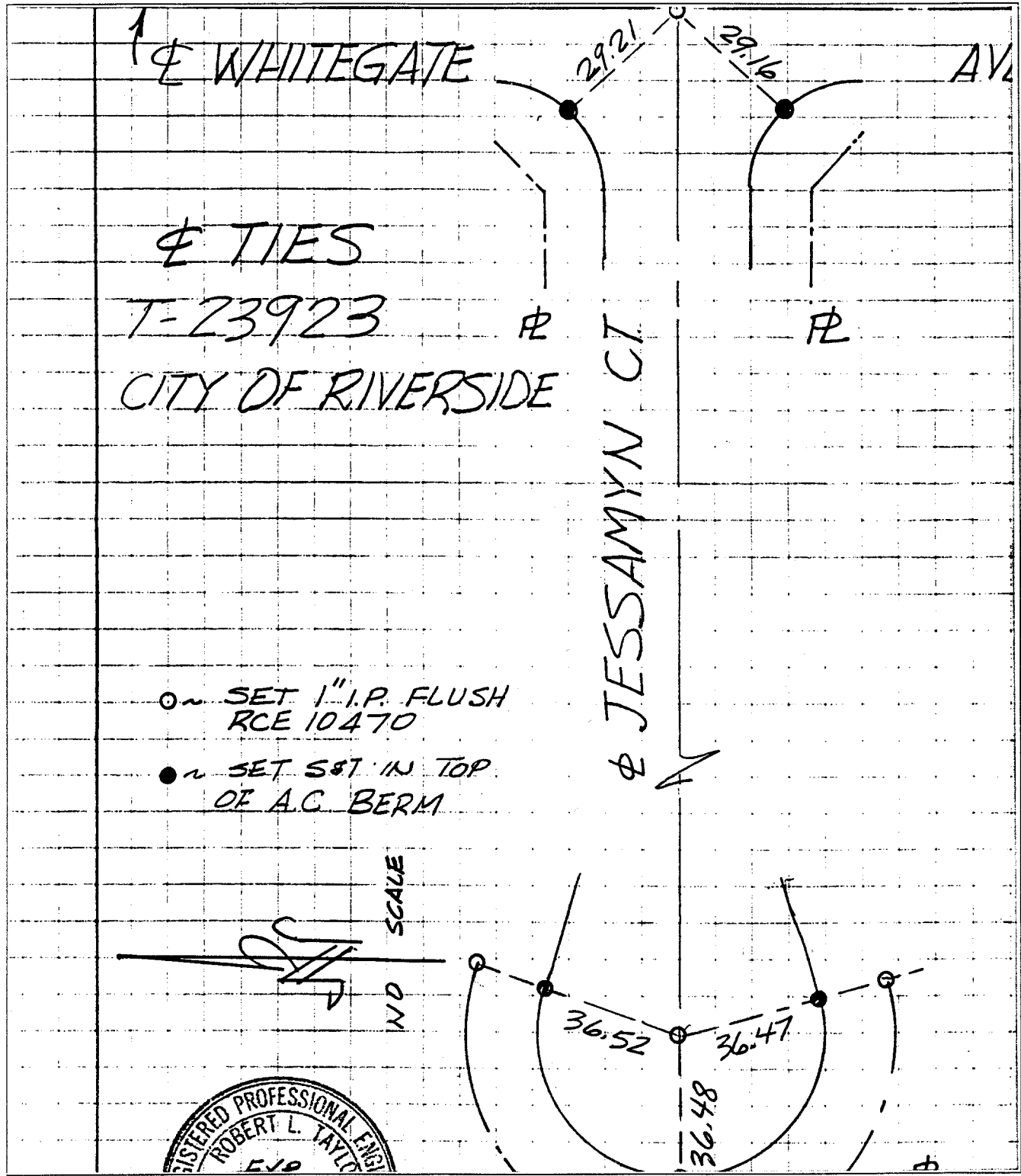


4334.TIF

Street: ~~Jessamyn Ct~~ Jessamyn Ct X-Street: Whitegate
Cul de Sac
OFFICIAL USE ONLY



Φ TIES
T-23923
CITY OF RIVERSIDE

- ~ SET 1" I.P. FLUSH RCE 10470
- ~ SET SET IN TOP OF A.C. BERM



- × FD. Ramset Nail on T/C
- FD. LD. & TK. on T/C
- FD. "C" Nail on T/C
- Set LD. & TK. on T/C

Scale:
Date:
Drawn by:
W.O.:
F.B.:

OFFICIAL TIE PLAT
CITY OF RIVERSIDE

These ties are for the purpose of perpetuating the found monumentation. No claim is made as to the relationship of the points or lines shown hereon to true boundary locations.

Sheet 1 of 1
File No.: