

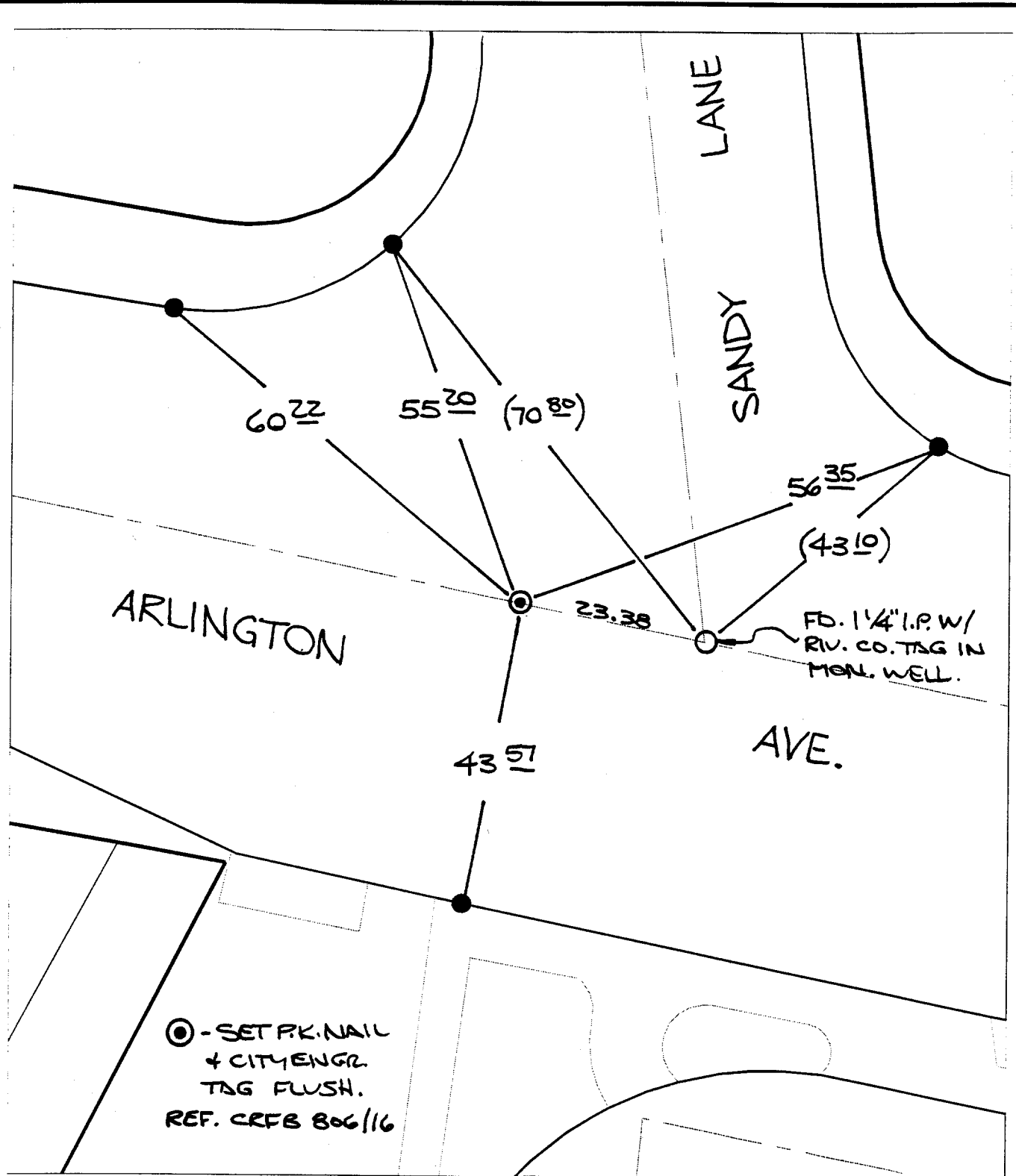
140.75  
63

SANDY LN.

X-Street:  
OFFICIAL USE ONLY

ARLINGTON AVE.

Street:



⊙ - SET PK. NAIL  
+ CITY ENGR.  
TAG FLUSH.  
REF. CRFB 806/16

× FD. Ramset Nail on T/C  
■ FD. "C" Nail on T/C

● FD. LD. & TK. on T/C  
○ Set LD. & TK. on T/C

Scale: 1" = 20'  
Date: 07/10/98  
Drawn by: bmark *JB*  
W.O.:  
F.B.:

**OFFICIAL TIE PLAT**  
CITY OF RIVERSIDE

*These ties are for the purpose of perpetuating the found monumentation. No claim is made as to the relationship of the points or lines shown hereon to true boundary locations.*

Sheet 1 of 1  
File No.: